

B E R L I N  
A J D C  
T R A C I N G  
O F F I C E  
1 9 4 5 - 1 9 4 7

J 7

12/VN/7

INTERNATIONALER  
SUCHDIENST  
3548 AROSEN (Waldeck)

This report was printed under the authority of the Information Control Division and with the assistance of the Jewish Community of Berlin at no cost to the American Joint Distribution Committee.

12 au 15:A

AMERICAN JOINT DISTRIBUTION COMMITTEE  
BERLIN

c/o PCIRO AREA 1 (BERLIN OFFICE)  
APO 742A, POSTMASTER, N.Y.

LOCAL ADDRESS: 247 KRONPRINZENALLEE  
BERLIN - ZEHLENDORF, GERMANY

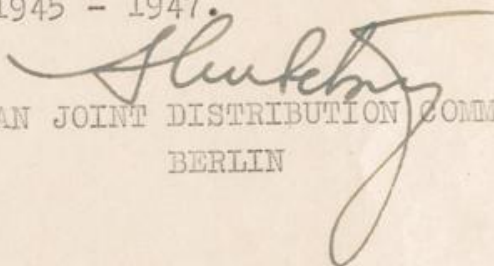
CABLE: JOINTFUND BERLIN  
TELEPHONES: 763377 - 845118

6 April 1948

Central Committee  
of Liberated Jews  
Search Bureau  
c/o AJDC Munich  
c/o IRO AREA 7  
APO 757  
c/o P.M. US Army  
Munich

Gentlemen:

Enclosed please find copy of report  
covering the activities of the Berlin AJDC  
Tracing Office during 1945 - 1947.

  
AMERICAN JOINT DISTRIBUTION COMMITTEE  
BERLIN



Photographed by A. O. BYERS

This Report is dedicated to all  
the thousands of still missing Jews.

יגעתי ולא מצאתי -  
אל תאמן!

לא יגעתי ומצאתי -  
אל תאמן!

יגעתי ומצאתי -  
תאמן!

We attempted, but could not find —  
don't believe it!

We did not attempt, but we found —  
don't believe it!

We attempted and found —  
Believe it!

(an ancient Hebrew proverb)

Printed in Berlin, Germany, 1947

1947

EDITION 100  
COPY NO. 127

Photographs by A. C. BYERS

Report, Composition and Decoration of this volume including charts and diagrams  
by LARRY LUBETSKY

No part of this report is to be reprinted without permission of the  
American Joint Distribution Committee

---

Printed in Berlin, Germany, 1948

ICB Nr. 9002

EDITION 150  
COPY Nr. 127

Photographs by A. C. EVERS

Report, Composition and Decoration of this volume including charts and figures  
by LARRY LUMETSKY

No part of this report is to be reprinted without permission of the  
American Iron and Steel Institute

Printed in Berlin, Germany, 1968

ICB No. 5001

EDITION 150  
COPY No. 127





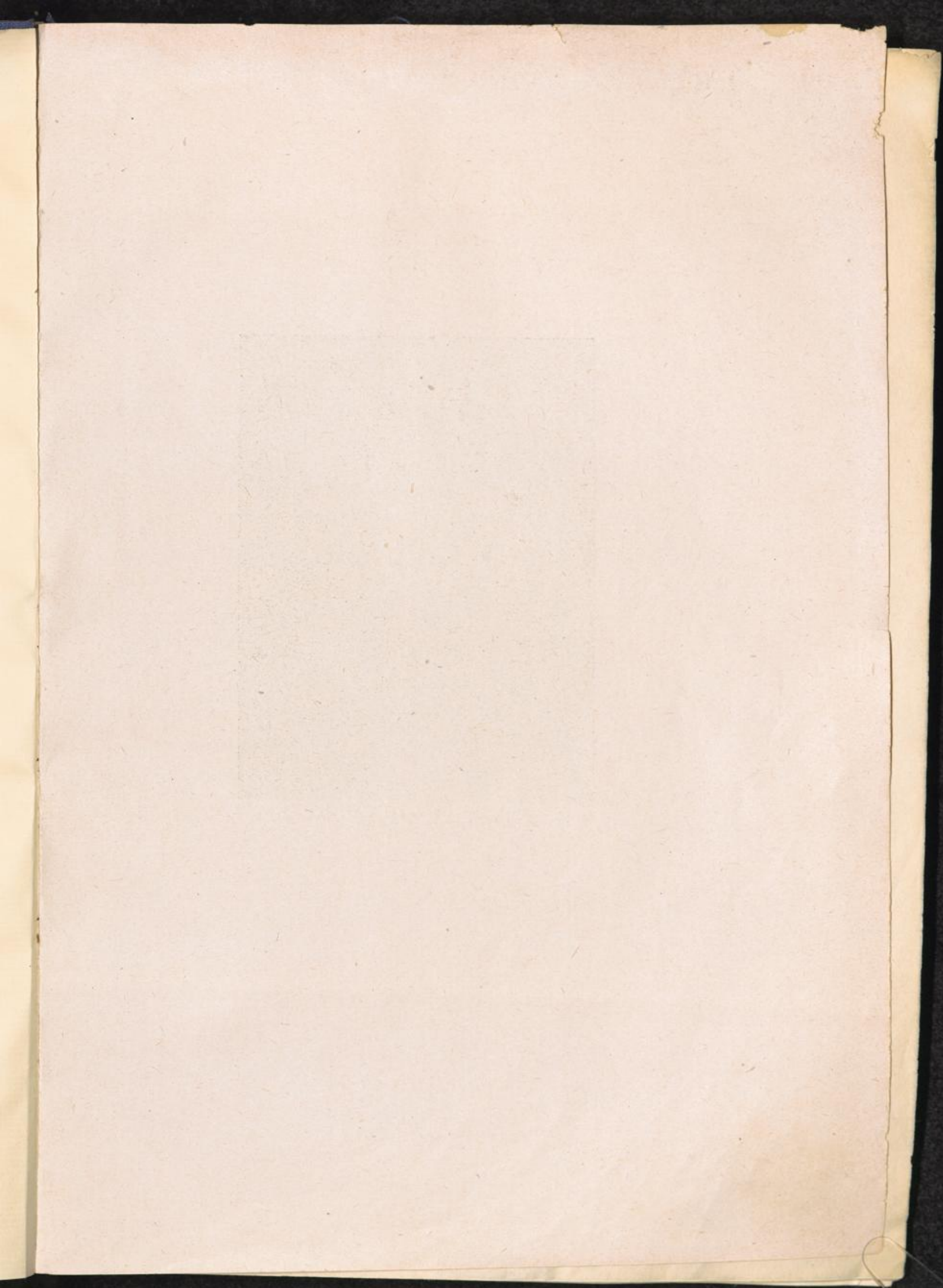




LARRY LUBETSKY  
Tracing Officer



LARRY LUBETSKY  
Tracing Officer



B E R L I N  
A J D C  
T R A C I N G  
O F F I C E  
1 9 4 5 - 1 9 4 7 .

BY LARRY LUBETSKY