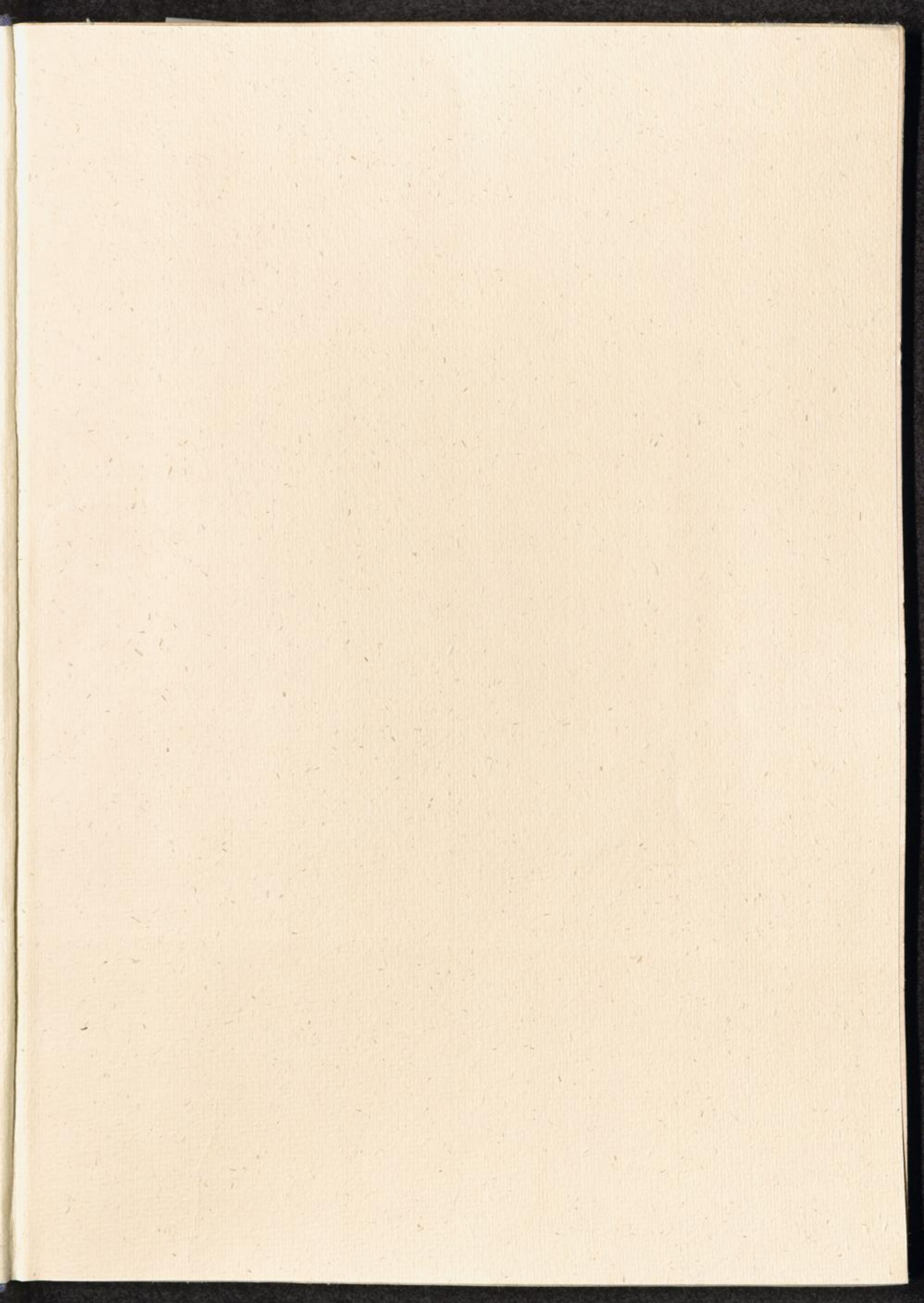


B E R L I N  
**A J D C**  
T R A C I N G  
O F F I C E  
1 9 4 5 - 1 9 4 7

This report was printed under the authority of the Information Control Division and with the assistance of the Jewish Community of Berlin at no cost to the American Joint Distribution Committee.

17 Qu 15





This Report is dedicated to all  
Report Commission and Delegation of this volume including chairs and historians  
the thousands of still missing Jews.  
BY LARRY LUBETSKY

יגעתי ורא מצאתי -  
אז תאמן!

לא יגעתי ומצאתי -  
אז תאמן!

No part of this report is to be reprinted without the permission of the

יגעתי ומצאתי -  
תאמן!

We attempted, but could not find —  
don't believe it!

We did not attempt, but we found —  
don't believe it!

We attempted and found —  
Believe it!

(an ancient Hebrew proverb)

Printed in Berlin, Germany, 1948

ICH № 0002

EDITION 150  
COPY № 38

Photographs by A. C. BYERS

Report, Composition and Decoration of this volume including charts and diagrams  
by LARRY LUBETSKY

No part of this report is to be reprinted without permission of the  
American Joint Distribution Committee

---

Printed in Berlin, Germany, 1948

ICB Nr. 9002

EDITION 150  
COPY Nr. 98

Photographs by A. C. BYERS

Design, Composition and Decoration of this volume including charts and diagrams  
by LARRY LUBETSKY

No part of this report is to be reproduced without permission of the  
American Iron and Steel Institute

---

Printed in Berlin, Germany, 1948

ICB No. 3007

EDITION 150  
COPY No. 98





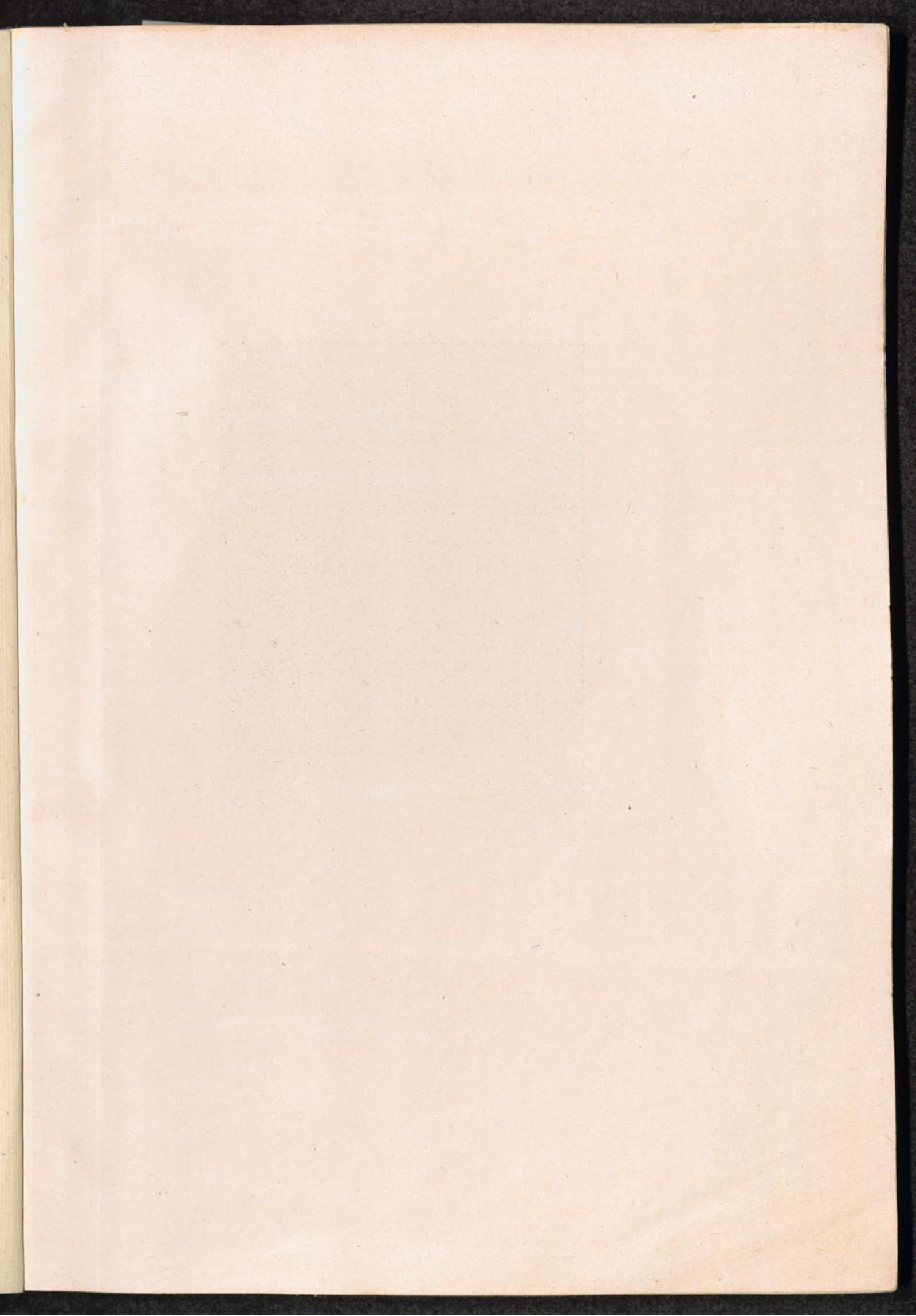




LARRY LUBETSKY  
Tracing Officer



LARRY LUBETSKY  
Tracing Officer



B E R L I N  
A J D C  
T R A C I N G  
O F F I C E  
1 9 4 5 - 1 9 4 7

BY LARRY LUBETSKY