

## **Figures, data, facts**

The ITS-archives are unique as far as the documentation referring to displaced civilians of World War II is concerned. On the fixed date 30th November 1992, the ITS has at its disposal:

- an index of names containing 44 million reference cards,
- 19,815 linear metres of documentary material,
- 135,630 metres of microfilm,
- 81,574 microfiches.

Since its establishment the ITS has:

- sent out 7.2 million replies,
- opened files for 2 million cases which are accessible on the occasion of renewed inquiries.

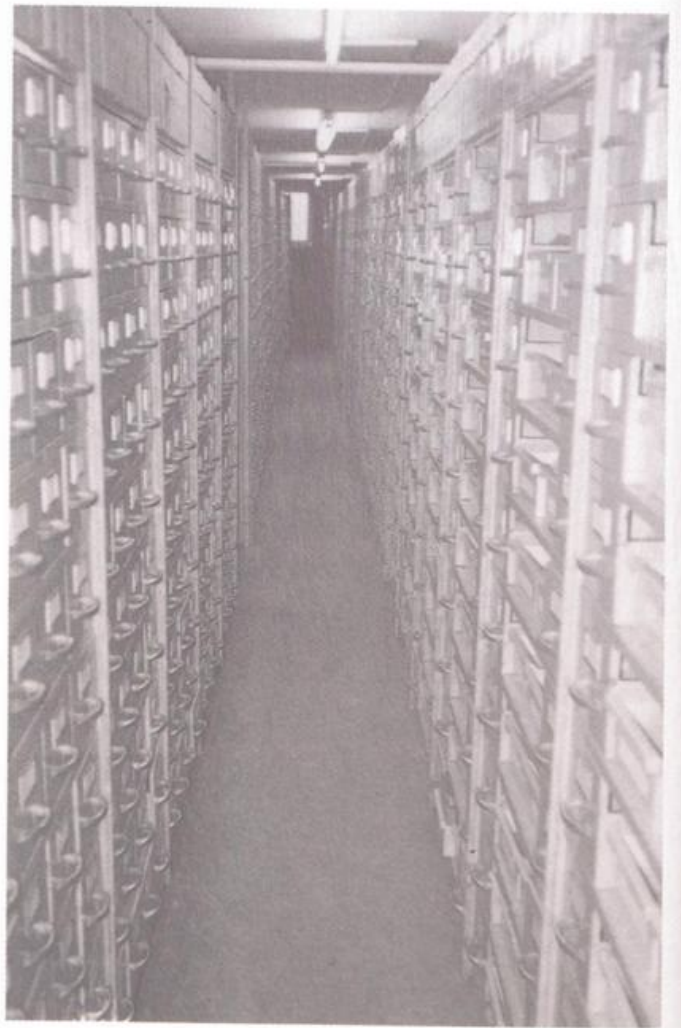
## **The number of personnel of the International Tracing Service**

In the history of the ITS, the number of personnel has to be described as fluctuating. In 1945, 200 persons were employed; in 1951, a peak of 1,100 employees was reached; in 1952, the number was again reduced to 250 persons.

On the fixed date 30th November 1992, 362 full-time and part-time employees work at the ITS.



Final deposit of  
processed cases



Original indexes