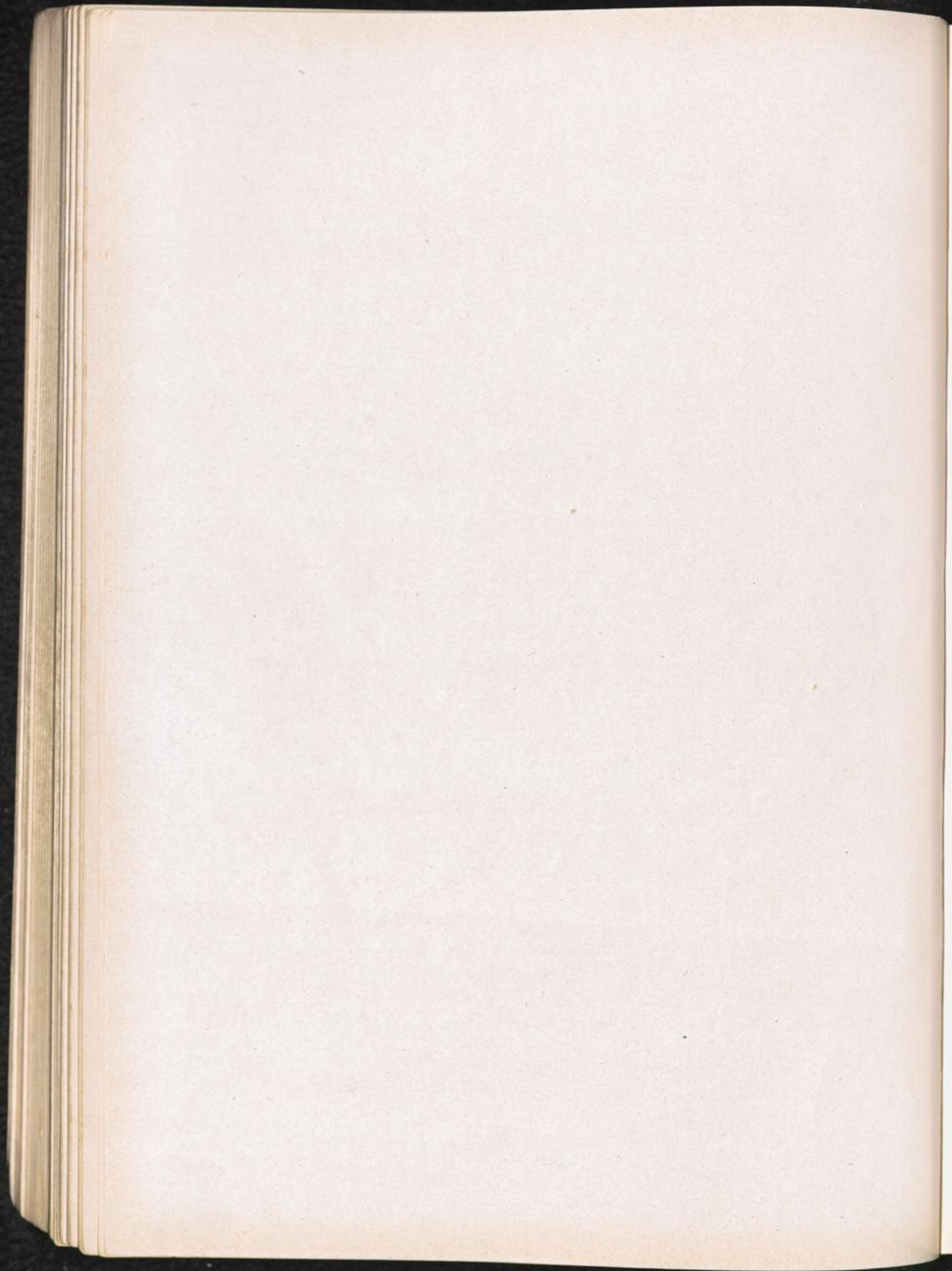


NORWAY



| | |
|--|-----------|
| OSLO | 14 D/8447 |
| Prison: Moellergarten 19 (BNTB). | |
| LOTRENSKOG | 14 D/8447 |
| Prison: Gerichtsgefaengnis (BNTB). | |
| OSEN | |
| CC for political prisoners in 1942, situated 1 km N of Osen. Treatment very bad. Mass graves of 840 prisoners and 6 single graves (Norwegian Red Cross, Information Department). | |
| ANKRA — Island | — |
| Work camp (BNTB). | |
| FALSTAD near Trondheim | 46 D/2339 |
| CC: (Norw. Red Cross). | |
| AKERSHUS near Oslo | 14 D/8446 |
| Prison: Kriegswehrmaechtgefaengnis, mentioned from 8. 1. 44 to 9. 9. 44 (prison list). | |
| KVALSUND | U 3/4839 |
| Work detail of Strafgefangenenlager Papenburg, see "Nord", Kdo. of Papenburg. | |
| LAXELV | — |
| Work detail of Strafgefangenenlager Papenburg, see "Nord", Kdo. of Papenburg. | |
| NORDKAP | W 1/0819 |
| Work detail of Strafgefangenenlager Papenburg, see "Nord", Kdo. of Papenburg. | |
| NORDREISEN | — |
| Work detail of Strafgefangenenlager Papenburg, see "Nord", Kdo. of Papenburg. | |
| OXELV | — |
| Work detail of Strafgefangenenlager Papenburg, see "Nord", Kdo. of Papenburg. | |
| RAXSEVARRE | — |
| Work detail of Strafgefangenenlager Papenburg, see "Nord", Kdo. of Papenburg. | |
| ROTSUNDELV | R 5/2756 |
| Work detail of Strafgefangenenlager Papenburg, see "Nord", Kdo. of Papenburg. | |
| RYPPERTOFJORD | — |
| Work detail of Strafgefangenenlager of Papenburg, see "Nord", Kdo. of Papenburg. | |

| | |
|---|-------------|
| ALTE FJORD | I 17/4846 |
| Work detail of Strafgefängenenlager Papenburg, see "Nord", Kdo. of Papenburg. | |
| BADDEREN | S 5/7864 |
| Work detail of Strafgefängenenlager Papenburg, see "Nord", Kdo. of Papenburg. | |
| BAKKEBY | R 5/3363 |
| Work detail of Strafgefängenenlager Papenburg, see "Nord", Kdo. of Papenburg. | |
| DJUPYIK | B 34 W/9638 |
| Work detail of Strafgefängenenlager Papenburg, see "Nord", Kdo. of Papenburg. | |
| FORSOEL | — |
| Work detail of Strafgefängenenlager Papenburg, see "Nord", Kdo. of Papenburg. | |
| GRAMMELSER | — |
| Work detail of Strafgefängenenlager Papenburg, see "Nord", Kdo. of Papenburg. | |
| HAMMERFEST | U 3/3656 |
| Work detail of Strafgefängenenlager Papenburg, see "Nord", Kdo. of Papenburg. | |
| HATTEN | — |
| Work detail of Strafgefängenenlager Papenburg, see "Nord", Kdo. of Papenburg. | |
| KARASJOK | W 6/1528 |
| Work detail of Strafgefängenenlager Papenburg, see "Nord", Kdo. of Papenburg. | |
| KIRKENES | AE 5/8779 |
| Work detail of Strafgefängenenlager Papenburg, see "Nord", Kdo. of Papenburg. | |
| BAERUM | 14 D/8447 |
| 6 km. W of Oslo | |
| CC called GRINI, former women's prison (SHAEF G — 5/9 — 17. 4. 44). | |
| STAVERN | 9 A/2951 |
| CC: (SHAEF G — 5/9 — 17. 4. 44). | |
| BERG | 9 D/5578 |
| 3 km. off Toensberg | |
| CC: (SHAEF G — 5/9 — 17. 4. 44). | |
| KRISTIANSAND | 5 A/9777 |
| Prison: for political prisoners (SHAEF G — 5/9 — 17. 4. 44). | |

TROMSDALEN near Tromsø

O 6/6040

CC: (SHAEF G — 5/9 — 17. 4. 44).

ESPELAND at Fana
20 km. off Bergen

B 33 W/0654

CC: (SHAEF G — 5/9 — 17. 4. 44).

ULVEN
30 km. S of Bergen

B 34 W/9834

CC: (SHAEF G — 5/9 — 17. 4. 44).

BREDTVET at Lotrenskog

15 C/9647

CC: (SHAEF G — 5/9 — 17. 4. 44)

