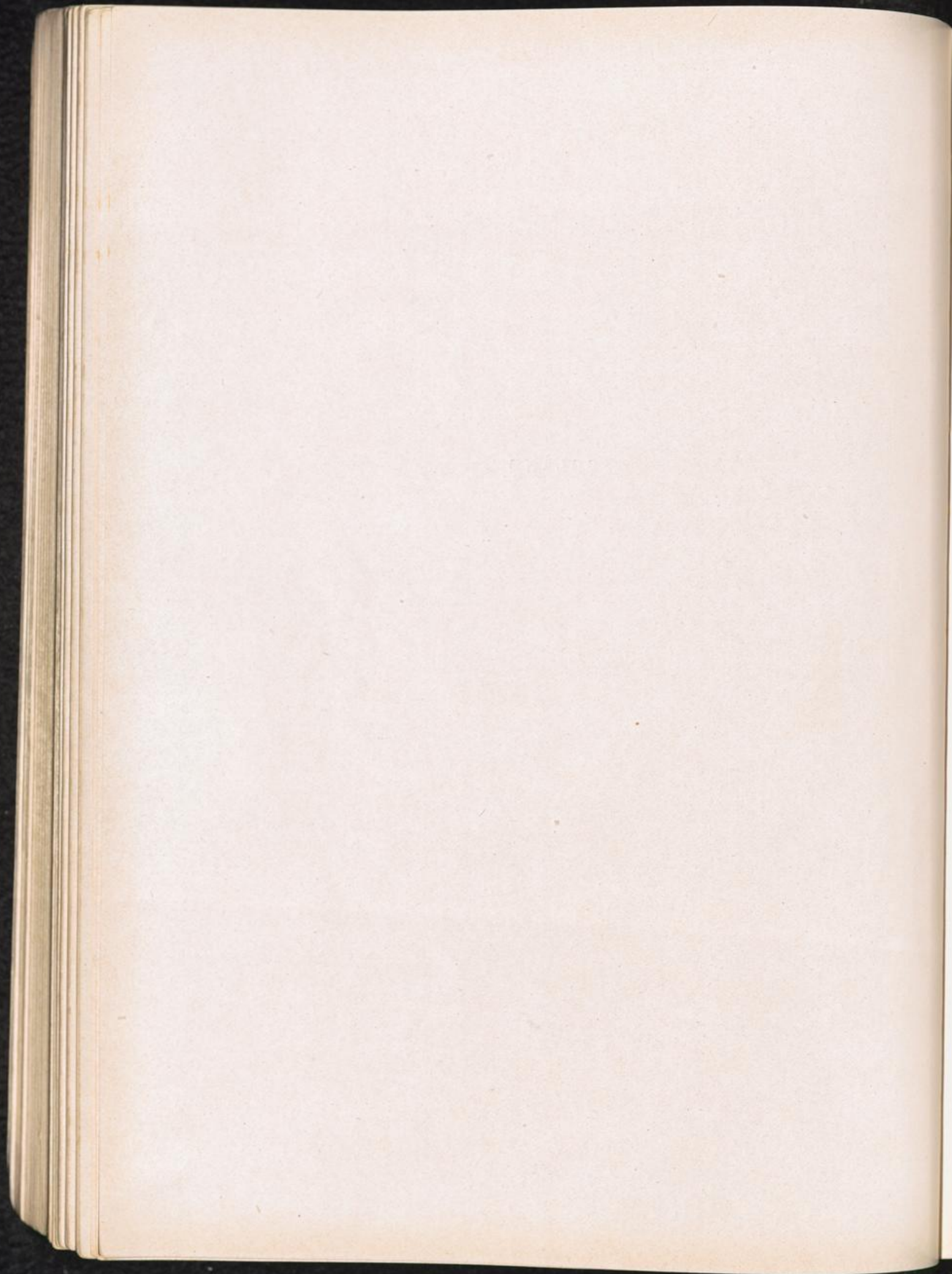


POLAND



ZAGACIE	pow. Konskie	Poland	Q 52/U 35
Forced labour camp of 300 Jews, June 42—July 43 (PWCB).			
SCHIERATZ — Sieradz	pow. Sieradz	Poland	Q 52/O 42
Prison: Strafanstalt Schieratz (file of former inmates). On 15. 2. 41 200 prisoners were transferred to Strafgefängenenlager Neusustrum (Trf. lists of Neusustrum).			
LYCK	former Krs. Lyck, Germany, now Poland		S 54/A 86
Prison: Landgerichtsgefaengnis (BNTB).			
ZBASZYN — Bentschen	woj. Poznanskie	Poland	O 53/W 53
Ghetto: 1941—44, 100 inmates (PWCB).			
MIEDZYCHOD — Birnbaum		Poland	O 53/W 57
CWC: 1941—44, 150 pers. (PWCB).			
MARIANOWO CEGLINIEC	pow. Miedzychod	Poland	O 53/W 69
Forced labour camp: 100 inmates, Jan.—Oct. 42 (PWCB).			
ZODYN — Deutsch Zodien	pow. Wolsztyn	Poland	O 53/W 62
Ghetto: 1942—43, 300 inmates (PWCB).			
KARNA	pow. Wolsztyn	Poland	O 53/W 62
Ghetto: 120 inmates, 28. 3. — 30. 9. 42 (PWCB).			
BOBROWKA — Bobruwko	pow. Nowy Tomysl	Poland	O 53/W 64
CWC: 3500 pers., 1940 — Aug. 43 (PWCB).			
WASOWO	pow. Nowy Tomysl	Poland	—
Ghetto: 200 inmates, end 1941—May 42 (PWCB).			
BOLEWICE	pow. Nowy Tomysl	Poland	—
Ghetto: 800 inmates, spring — autum 44 (PWCB).			
TURKOWO	pow. Nowy Tomysl	Poland	P 53/W 95
CWC: Apr. 41—March 42, 400 pers. (PWCB).			
CIESLE OTUSZ	pow. Nowy Tomysl	Poland	—
CWC: June 41—April 43, 500 pers. (PWCB).			
WRONKEN — Wronki	pow. Nowy Tomysl	Poland	P 53/W 88
Prison: Strafgefaengnis (personal file of former inmate).			

OBORNIKI	pow. Oborniki	Poland	P 53/X 18
CWC: May 40—Febr. 43, 300 pris. (PWCB).			
KRZYZOWNIKI	pow. Poznan	Poland	P 53/X 16
Forced labour camp: 1000 Jews, summer 40—autumn 43 (PWCB).			
STRZESZYN	pow. Poznan	Poland	P 53/X 16
Forced labour camp: 500 Jews, autumn 42—beginning 44 (PWCB).			
SWARZEDZ	pow. Poznan	Poland	P 53/X 36
Forced labour camp: 1200 Jews, 1941—43 (PWCB).			
KOBYLNICA	pow. Poznan	Poland	P 53/X 36
Forced labour camp: 370 Jews, April 42—Aug. 43 (PWCB).			
KRZESLICE	pow. Poznan	Poland	—
CWC: of 400 pers., autumn 42—Jan. 45 (PWCB).			
POSEN — Poznan		Poland	P 53/X 26
Arbeitserziehungslager of the Gestapo, offices in Mollwitzerweg 10 (personal file of former inmate).			
Prison: Untersuchungshaftanstalt (BNTB).			
Stammlager: in "Untersuchungshaftanstalt" (personal file of former inmate).			
Forced labour camps: Debiec, 1200 Jews, spring 42—autumn 43, Stadion Miejski, 1000 Jews, 1942 — beginning 43, Fort VII, 1000 pris., Nov. 39—43 (PWCB).			
CWC: (Netherlands NTB).			
WRONCYN	pow. Poznan	Poland	P 53/X 03
Ghetto: 100 inmates, 7. 9. 41—Nov. 44 (PWCB).			
PIOTROWO — Krzesiny	pow. Poznan	Poland	P 53/X 13
Forced labour camp: 5000 Jews, 1941—end 43 (PWCB).			
ZABIKOWO	pow. Poznan	Poland	P 53/X 25
Forced labour camp: 2000 inmates, beginning 43—21. 1. 45 (PWCB).			
ZABINKO	pow. Srem	Poland	P 53/X 23
Forced labour camp: of 160 pers., end 43 (PWCB).			
JASIEN	pow. Koscian	Poland	P 53/X 12
CWC: Aug. 44—20. 1. 45, 400 pers. (PWCB).			
CZEMPIN	pow. Koscian	Poland	P 53/X 13
CWC: July 44—21. 1. 45, 800 pers. (PWCB).			

BIECZYNY	pow. Koscian	Poland	P 53/X 13
CWC: Aug. 44—20. 1. 45, 200 pers. (PWCB).			
SROCKO WIELKIE	pow. Koscian	Poland	P 53/X 13
CWC: 4. 8. 44—20. 1. 45, 400 pers. doing trench work (PWCB).			
PIECHANIN	pow. Koscian	Poland	P 53/X 13
CWC: Aug. 44—20. 1. 45, trench work, 350 pers. (PWCB).			
PIOTRKOWICE	pow. Koscian	Poland	P 53/X 13
CWC: Aug. 44—20. 1. 45, trench work, 750 pers. (PWCB).			
NEKLA	pow. Sroda	Poland	P 53/X 56
CWC: April 41—Sept. 44, 1500 pers. (PWCB).			
WRZESNIA	pow. Wrzesnia	Poland	P 53/X 65
CWC: beginning — end 1943, 500 pers., (PWCB).			
OTOCZNA	pow. Wrzesnia	Poland	P 53/X 76
CWC.: July 42—Nov. 43, 900 pers. (PWCB).			
GNIEZNO — Gnesen		Poland	P 53/X 68
Prison: (BNTB), Landgerichtsgefängnis (VVN).			
„Durchgangs- und Umsiedlungslager" — Transit and resettlement center, Oct. 39—April 40, 1500 pers. (PWCB).			
MURCZYN	pow. Znin	Poland	P 53/S 72
Ghetto: Nov. 41—July 42, 110 inmates (PWCB).			
JANIKOWO	pow. Inowraclaw	Poland	P 53/J 04
Forced labour camp: 300 Jews, Nov. 40—March 44 (PWCB).			
KRUSZWICA — Gruschwitz	pow. Inowraclaw	Poland	P 53/J 14
CCKdo. of Gross-Rosen (PWCB), women, working for the "Textilwerke AG" (US Army CC Handbook).			
CWC: 3. 11. 42—27. 4. 43, 120 Jews (PWCB).			
HOHENSALZA — Inowraclaw		Poland	P 53/J 15
Forced labour camp of 130 Jews, 1941—42,			
Forced labour camp of 300 Jews, 1941—43,			
"Durchgangs- und Umsiedlungslager" — Transit and Transfer camp, 1000 pers., 1940—19. 1. 45 (PWCB).			
CZARKOW	pow. Konin	Poland	P 53/0 19
Forced labour camp: of 1100 Jews, winter 42—Nov. 44 (PWCB).			

GOSLAVICE	pow. Konin	Poland	P 53/O 19
Forced labour camp: of 7000 Jews, March 44—20. 1. 45 (PWCB).			
MIASTECZKO KRAINSKIE	pow. Wyrzysk	Poland	P 54/S 13
CWC: 1000 pers., Nov. 44—20. 1. 45 (PWCB).			
BRZOSTOWO	pow. Wyrzysk	Poland	P 54/S 13
CWC: 400 pers., Oct. 44—Jan. 45 (PWCB).			
BIALOSLIWIE	pow. Wyrzysk	Poland	P 54/S 24
Forced labour camp: with 120 inmates, 15. 4. — 15. 11. 42 (PWCB).			
GRABOWNO	pow. Wyrzysk	Poland	P 54/S 24
CWC: of 660 pers., Oct. 44—Jan. 45 (PWCB).			
KOBYLARNIA	pow. Szubin	Poland	P 54/S 83
CWC: of 1500 pers., autumn 1944—Jan. 45 (PWCB).			
KORONOWO	pow. Bydgoszoz	Poland	P 54/S 77
Forced labour camp: of 1200 inmates, 1942—26. 1. 45 (PWCB).			
FORDON		Poland	P 54/J 19
Prison: Sicherungsanstalt, Albert Forsterplatz (BNTB). Prison for women (BNTB).			
POTULICE	pow. Bydgoszcz	Poland	—
Forced labour camp: 7000 pers., Jan. 40—20. 1. 45 (PWCB). "Durchgangs- und Umsiedlungslager" — Transit and Transfer camp, Jan. 40—42 (PWCB).			
BROMBERG — Bydgoszcz		Poland	P 54/J 09
CCKdo. of Stutthof (BNTB). Prisons: Grosse Bergstrasse 8, Untersuchungsgefaengnis, Grosse Bergstrasse 40 (BNTB). CWC's: (Netherlands NTB), Muehltal (BNTB).			
CHOJNICE — Konitz		Poland	P 54/N 41
Prison: (BNTB).			
BRUSY — Bruss	pow. Chojnice	Poland	P 54/N 53
CCKdo. of Stutthof, 8 pris., Aug. 44—March 45. Forced labour camp: 400 persons, end 42—March 45 (PWCB).			

GUTOWIEC — Guttowitz	pow. Chojnice	Poland	P 54/N 62
Prison: with Polish and Jewish inmates (BNTB).			
GARCZYN — Gartschin	pow. Koscierzyna	Poland	P 55/D 19
CCKdo. of Stutthof, 400 pris., Sept. 39—45 (PWCB).			
LIPUSZ — Lippusch	pow. Koscierzyna	Poland	P 55/N 55
Forced labour camp: 400 inmates, 1943—45 (PWCB).			
ZDROJE — Sdroin	pow. Koscierzyna	Poland	P 55/N 55
Forced labour camp: 2000 Jews, 1942—43 (PWCB).			
DZIEMIANY — Dzimianen	pow. Koscierzyna	Poland	P 55/N 54
CCKdo. of Stutthof, 650 pris., Sept. 43—March 45 (PWCB).			
KOKOSZKI — Kokoschken	pow. Gdansk	Poland	Q 55/Y 32
CCKdo. of Stutthof, 1944—45, 1500 pris. (PWCB).			
GDYNIA — Gdingen, Gotenhafen		Poland	Q 55/Y 44
CCKdo. of Stutthof, 1944—45, 600 pris. (PWCB).			
CWC: Deutsche Werke Kiel in Nussdorf (BNTB).			
NOWE — Neuenburg	pow. Swiecie	Poland	Q 54/D 44
Forced labour camp: 100 inmates, Dec. 43—March 44 (PWCB).			
STAROGROD — Pr. Stargard		Poland	Q 54/D 38
CCKdo. of Stutthof (Polish Red Cross).			
STARY FOLWARK — Althausen	pow. Grudziask	Poland	Q 54/D 21
CWC: 800 pers., 1. 7. 44—10. 1. 45 (PWCB).			
SCHWETZ — Swiecie		Poland	Q 54/D 32
Prison: (BNTB).			
LUBICZ	pow. Torun	Poland	Q 54/J 57
CWC: 9000 workers, earthwork, Aug. 44—5. 1. 45 (PWCB).			
ROGOWO — Rogau	pow. Torun	Poland	Q 54/J 48
CWC: 1000 workers, earthwork, Aug. 44—Jan. 45 (PWCB).			
LIPNICKI — Lindenhof	pow. Torun	Poland	Q 54/J 48
CWC: 5000 workers, earthwork, Aug.—Oct. 44 (PWCB).			

GREBOCIN — Gramtschen	pow. Torun	Poland	Q 54/J 48
CWC: 3000 workers, earthwork, Aug. 44 — Jan. 45 (PWCB).			
CHORABIE — Kiobia	pow. Torun	Poland	Q 54/J 58
situated 1/2 mile W of Mierzynek			
CCKdo. of Stutthof, 1700 pris., 1944—19. 1. 45 (PWCB).			
SZEROKOPAS — Scherokopas	pow. Torun	Poland	Q 54/D 40
situated 1 mile SW of Bocion			
CCKdo. of Stutthof, 1700 pris., Aug. 44—Jan. 45 (PWCB).			
BOCION — Bottschin	pow. Torun	Poland	Q 54/D 40
situated 1 mile NE of Szerokopas			
CCKdo. of Stutthof, 1600 pris., Aug. 44 — Jan. 45 (PWCB).			
ROGOWKO	pow. Torun	Poland	—
CWC: 1500 workers, earthwork Aug. 44 — Jan. 45 (PWCB).			
GRODNO	pow. Torun	Poland	—
CCKdo. of Stutthof, 1500 pris., 1944—15. 1. 45 (PWCB).			
MALA NIESZAWSKA	pow. Torun	Poland	—
CWC: 300 workers, earthwork, 1944—Jan. 45 (PWCB).			
JEDWABNO	pow. Torun	Poland	—
CWC: 1000 workers, earthwork, Aug.—Dec. 44 (PWCB).			
LISEWO — Lissewo	pow. Zabrzezno	Poland	Q 54/D 40
CWC: 1500 workers, earthwork, Aug. 44 — 20. 1. 45 (PWCB).			
SZYCHOWO — Heynerode	pow. Wabrzezno	Poland	Q 54/J 59
CWC: 150 persons (PWCB).			
ELGISZEWO — Elgischewo	pow. Wabrzezno	Poland	Q 54/J 68
CWC: 1500 workers, earthwork, Sept. 44—45 (PWCB).			
GRAUDENZ — Grudziadz		Poland	Q 54/D 53
Prisons: Jugendgefaengnis, Amtstr. 13/17, Wehrmachtstrafanstalt (BNTB).			
MALKI — Malken	pow. Brodnica	Poland	Q 54/D 80
situated 3 miles NE of Cieszyny			
CCKdo. of Stutthof, 1000 pris., April 44—28. 1. 45 (PWCB).			

CIESZYNY — Cieszyn pow. Brodnica situated 3 miles SW of Malki	Poland	Q 54/J 89
CCKdo. of Stutthof, 1600 pris., Sept. 44—28. 1. 45 (PWCB).		
JABLONOWO ZAMEK pow. Brodnica	Poland	Q 54/K 39
CWC: 500 pris., end 1940—19. 1. 45 (PWCB).		
NISKIE BRODNO pow. Brodnica	Poland	—
CCKdo. of Stutthof, 500 pris., Sept. 44—Jan. 45 (PWCB).		
KRZEMIENIEWO pow. Lubawa	Poland	Q 54/E 01
CCKdo. of Stutthof, 450 pris., 15. 9. 44 — 18. 1. 45 (PWCB).		
GWIZDZINY — Gwisdzyn pow. Lubawa	Poland	Q 54/E 11
CCKdo. of Stutthof, 400 pris., 28. 8. 44—15. 1. 45 (PWCB).		
GUTOWO pow. Lubawa	Poland	Q 54/E 22
CCKdo. of Stutthof, 1000 pris., Sept. 44—15. 1. 45 (PWCB).		
NAGUSZEWO pow. Dzialdowo	Poland	Q 54/E 32
Forced labour camp: 480 Jews, 15. 9. 44—Dec. 44 (PWCB).		
DZIALDOWO — Soldau	Poland	Q 54/E 40
Forced labour camp: 1000 inmates, Dec. 39—19. 1. 45 (PWCB).		
LEWICZYN pow. Mlawa	Poland	Q 54/K 58
Forced labour camp: 100 inmates, 1. 4. 40—1. 12. 41 (PWCB).		
MIERZYNEK pow. Lipno	Poland	Q 54/J 58
CCKdo. of Stutthof, 3600 pris., 6. 9. 44—14. 1. 45 (PWCB).		
CHOZEN pow. Lipno	Poland	Q 53/K 05
CWC: of 600 workers, earthwork, Aug. 44—19. 1. 45 (PWCB).		
MALANOWO pow. Lipno	Poland	Q 53/J 95
CWC: 600 workers, earthwork, Aug. 44—19. 1. 45 (PWCB).		
TLUCHOWEK — Tluchowo pow. Lipno	Poland	Q 53/J 94
CWC: 400 workers, earthwork, 15. 9. 44—17. 1. 45 (PWCB).		
KLOBUKOWO pow. Lipno	Poland	Q 53/J 94
CWC: 400 workers, earthwork, 15. 9. 44—17. 1. 45 (PWCB).		

CHALIN	pow. Lipno	Poland	Q 53/J 94
CWC: 400 workers, earthwork, 10. 9. 44—15. 1. 45 (PWCB).			
WIELGIE	pow. Lipno	Poland	Q 53/J 84
CWC: 5000 workers, earthwork, Sept. 44—19. 1. 45 (PWCB).			
ZLOWODY	pow. Lipno	Poland	—
CWC: 1000 workers, earthwork, Sept. 44—20. 1. 45 (PWCB).			
LOCHOCIN	pow. Lipno	Poland	Q 53/J 74
CWC: 2000 workers, earthwork, 5. 7. 44—20. 1. 45 (PWCB).			
ZADUSZNIKI	pow. Lipno	Poland	Q 53/J 74
CWC: 1500 workers, earthwork, Sept. 44—20. 1. 45 (PWCB).			
NASIEGNIEWO	pow. Lipno	Poland	Q 53/J 74
CWC: 2000 workers, earthwork, Oct. 44—20. 1. 45 (PWCB).			
KROJCZYN	pow. Lipno	Poland	Q 55/J 74
CWC: 2000 workers, earthwork, Dec. 44—20. 1. 45 (PWCB).			
KREPA	pow. Lipno	Poland	—
CWC: 1000 workers, earthwork, Dec. 44—20. 1. 45 (PWCB).			
POLIK	pow. Sierpe	Poland	Q 53/K 16
Forced labour camp: 100 inmates, May—10. 10. 40 (PWCB).			
SIERPC	pow. Sierpe	Poland	Q 53/K 15
Forced labour camp: 180 inmates, 1941—44 (PWCB).			
POLESIE	pow. Sierpe	Poland	—
Forced labour camp: 100 inmates, spring — autumn 43 (PWCB).			
PLOCK		Poland	Q 53/K 12
Prison: Gerichtsgefängnis in Goeringstr. (BNTB).			
BIALOBRZEGI	pow. Plock	Poland	Bialo: Q 53/K 03
CWC: 220 workers (PWCB).			
BIELSK	pow. Plock	Poland	Q 53/K 13
Forced labour camp: 120 inmates, I. 1. 42 — March 43 (PWCB).			

GRALEWO	pow. Plock	Poland	Q 53/K 44
Forced labour camp: 200 inmates, Nov. 40 — Dec. 43 (PWCB).			
DROBIN	pow. Plock	Poland	Q 53/K 34
Forced labour camp: 200 inmates, May 40 — Nov. 43 (PWCB).			
MALSZYCE	pow. Lowicz	Poland	Q 53/P 27
Forced labour camp: 100 inmates, 1941—16. 1. 45 (PWCB).			
LESSLAU — Wloclawek	pow. Wloclawek	Poland	Q 53/J 73
CCKdo. of Auschwitz (Polish Red Cross; BNTB).			
Prison: Haftanstalt Lesslau (personal file of former inmate).			
WARTHBRUECK — Kolo		Poland	Q 53/O 38
Prisons: "Stammlager Warthbrueecken", comprising: Untersuchungshaftanstalt, Gerichtsgefaengnis (personal file of former inmate).			
CHELMNO	pow. Kolo	Poland	Q 53/O 47
An extermination camp, existing 8. 12. 41 — 18. 1. 45 (PWCB).			
SWINICE	pow. Turek	Poland	Q 53/O 56
CWC: 11000 workers, earthwork, July 44 — Jan 45 (PWCB).			
SOLTYSY	pow. Wielun	Poland	Q 52/T 26
Ghetto: of 200 Jews, 8. 1.—Aug. 42 (PWCB).			
LUTUTOW	pow. Wielun	Poland	Q 52/T 29
Forced labour camp: 200 inmates, 19. 7.—18. 8. 41 (PWCB).			
MIERZYCE	pow. Wielun	Poland	Q 52/T 37
CWC: 6000 workers, earthwork, 4. 8. — 15. 11. 44 (PWCB).			
SIEMKOWICE	pow. Wielun	Poland	Q 52/T 57
CWC: 8000 workers, earthwork, 11. 8. 44—18. 1. 45 (PWCB).			
RADOMSKO — Radom		Poland	Q 52/T 96
Prison: (BNTB).			
NIECHMIROW	pow. Sieradz	Poland	Q 52/T 49
Forced labour camp: 250 inmates, July 42—2. 7. 44 (PWCB).			
WARTA	pow. Sieradz	Poland	Q 52/O 33
CWC: 2000 workers, earthwork, Sept. 44—15. 1. 45 (PWCB).			

BURZENIN	pow. Sieradz	Poland	Q 52/O 40
Forced labour camp: 220 inmates, Febr. 42—2. 7. 44 (PWCB).			
BOGUMILOW	pow. Sieradz	Poland	Q 52/O 41
Forced labour camp: 100 inmates, April 43—July 44 (PWCB).			
LITZMANNSTADT	— Lodz	Poland	Q 52/O 93
Prisons: Kulmhof, Jugendbewahrlager, Robert Kochstr. 16 Danzigerstr. (BNTB).			
CWC: 3000 persons, 1940—19. 1. 45 (PWCB).			
RADOGOSZCZ	pow. Lodz	Poland	Q 52/O 94
suburb of Lodz			
Prison: Sicherungsanstalt for women (BNTB).			
Forced labour camp: 3000 inmates, 1940—Jan. 45 (PWCB).			
ANTONIEW	— Sikawa pow. Lodz	Poland	Q 52/O 94
CWC: 1000 workers, 12. 3. 43—18. 1. 45 (PWCB).			
DZIERZAZNA	pow. Lodz	Poland	Q 52/O 45
CWC: 200 workers, March 1943—Jan. 45 (PWCB).			
KLUKI	pow. Piotrkow	Poland	Q 52/T 79
CWC: 2000 workers, earthwork, Oct. 44—Jan. 45 (PWCB).			
KLESZCZOW	pow. Piotrkow	Poland	Q 52/T 87
CWC: 230 workers, earthwork, Dec. 44—17. 1. 45 (PWCB).			
SULEJOW	pow. Piotrkow	Poland	Q 52/U 29
CWC: 9000 workers, 1. 8. 44—18. 1. 45 (PWCB).			
WADLEW	pow. Piotrkow	Poland	Q 52/O 80
CWC: 780 workers, earthwork, 20. 11. 44—16. 1. 45 (PWCB).			
PIOTRKOW	pow. Piotrkow	Poland	Q 52/U 19
Forced labour camps: 690 Jews in the Ul. 1. Maja, 1. 8. 43—28. 11. 44, 1000 Jews in the Ul. Sulejowska, 1. 8. 43—22. 11. 44, 3000 Jews : see Poniatow (PWCB).			
PONIATOW	pow. Piotrkow	Poland	Q 52/U 19
situated 2½ miles SE of Piotrkow			
Forced labour camp: 3000 Jews "Piotrkow" (PWCB), was situated in Poniatow (BNTB).			

DLUTOW	pow. Lask	Poland	Q 52/O 81
CWC: 1800 workers, earthwork, 20. 10. 44—16. 1. 45 (PWCB).			
ZELOW	pow. Lask	Poland	Q 52/O 70
Forced labour camp: 900 inmates, Nov. 42—Nov. 44 (PWCB).			
HERBERTOW	pow. Lask	Poland	—
Forced labour camp: 500 inmates, 6. 9. 43—6. 9. 44 (PWCB).			
NIEWADOW	pow. Brzeziny	Poland	Q 52/P 22
CWC: 1150 workers, 1942—Dec. 44 (PWCB).			
ZAWADA	pow. Brzeziny	Poland	Q 52/P 21
Forced labour camp: 300 inmates, Oct. 42—March 44 (PWCB).			
MICHALOW	pow. Skierniewice	Poland	Q 52/P 56
CWC: 110 workers, earthwork, 10. 12. 44/16. 1. 45 (PWCB).			
NOWY DWOR	pow. Skierniewice	Poland	Q 52/P 54
CWC: 4000 workers, earthwork, Aug.—Nov. 44 (PWCB).			
SKIERNIEWICE		Poland	Q 52/P 45
CWC: 2000 workers, earthwork, Aug. 44—16. 1. 45 (PWCB).			
KAMION	pow. Skierniewice	Poland	Q 52/P 45
CWC: 5000 workers, earthwork, Aug.—Nov. 44 (PWCB).			
DABROWICE	pow. Skierniewice	Poland	Q 52/P 35
Forced labour camp: 300 Jews, 1942—44 (PWCB).			
BYCZKI	pow. Skierniewice	Poland	Q 52/P 34
CWC: 500 workers, earthwork, Nov. 44—Jan. 45 (PWCB).			
RECZKOW	pow. Konskie	Poland	Q 52/U 37
CWC: 200 workers, earthwork, 5. 9. 44—14. 1. 45 (PWCB).			
CZERMNO	pow. Konskie	Poland	Q 52/U 36
CWC: 500 workers, earthwork, Nov. 44—13. 1. 45 (PWCB).			
WASOSZ	pow. Konskie	Poland	R 52/U 66
CWC: 300 workers, earthwork, Nov. 44—12. 1. 45 (PWCB).			

GORY MOKRE	pow. Konskie	Poland	R 52/U 57
CWC: 550 workers, earthwork, Aug. 44—16. 1. 45 (PWCB).			
JOZEFOW	pow. Konskie	Poland	—
CWC: 250 workers, earthwork, 15. 9. 44—14. 1. 45 (PWCB).			
SKARZYSKO KAMIENA	pow. Konskie	Poland	R 52/U 96
Forced labour camp: 8000 Jews, Aug. 42—July 44 (PWCB).			
BLIZIN	pow. Konskie	Poland	R 52/U 86
Forced labour camp: 5000 inmates, 8. 3. 43—July 44 (PWCB).			
PARZYMIECHY	pow. Czestochowa	Poland	Q 52/T 45
Forced labour camp: 300 Jews, 1942—45 (PWCB).			
UJAZDOWEK	pow. Ciechanow	Poland	—
Forced labour camp: 100 inmates, March 41 — Nov. 44 (PWCB).			
CIECHANOW — ZICHENAU	pow. Ciechanow	Poland	R 53/K 76
Forced labour camp: 100 inmates, Dec. 39—Nov. 44 (PWCB).			
CWC: 250 workers, 1940—42 (PWCB).			
SANSK JANOWSKO	pow. Ciechanow	Poland	R 53/K 74
Forced labour camp: 150 inmates, 2. 5. 41—17. 1. 43 (PWCB).			
TRETOWO	pow. Ciechanow	Poland	—
Forced labour camp: 200 inmates, 1. 6. 41—Aug. 42 (PWCB).			
SMIECIN NOWY	pow. Ciechanow	Poland	—
Forced labour camp: 120 inmates, April 41—Oct. 43 (PWCB).			
WEGRZYNOW	pow. Ciechanow	Poland	R 53/F 06
Forced labour camp: 250 inmates, Jan.—March 41 (PWCB).			
NARTY	pow. Sochaczew	Poland	R 53/P 69
Forced labour camp: 300 Jews, April—autumn 41 (PWCB).			
WILANOW	pow. Warszawa	Poland	R 53/L 08
Forced labour camp: 400 Jews, April—1. 12. 42 (PWCB).			
ZACISZE	pow. Warszawa	Poland	R 53/L 09
Forced labour camp: 1000 inmates, 1941—44 (PWCB).			

LEGIONOWO	pow. Warszawa	Poland	—
Forced labour camp: 100 Jews, 1941—43 (PWCB).			
FALENCIA	pow. Warszawa	Poland	R 53/L 18
Forced labour camp: 100 Jews, 15. 8. 42—7. 5. 43 (PWCB).			
REMBERTOW	pow. Warszawa	Poland	R 53/L 19
CWC: "Poligon", 2000 workers, earthwork, July—Sept. 44 (PWCB).			
WARSCHAU — WARSZAWA		Poland	R 53/L 09
CC "Warschau", established as such on 15. 8. 43 (photocopies of Gestapo acts Duesseldorf), probably from the Warschau Ghetto (BNTB); last occurs on 5. 1. 44 (Oranienburg book shipments).			
Prisons: Parviatr. Mokotow Rakowitschstr. (BNTB).			
Forced labour camp: ul. Gesia 24, 350 inmates, March 43—44 (PWCB).			
NOWY DWOR	pow. Warszawa	Poland	R 53/K 81
CWC's: "Szkola", 100 workers, earthwork, Aug. 44—15. 1. 45 ul. Warszawa, 100 workers earthwork, Aug. 44—15. 1. 45 (PWCB).			
POMIECHOWEK	pow. Warszawa	Poland	R 53/K 81
Forced labour camp: 1000 inmates, 10. 3. 41—30. 9. 44 (PWCB).			
WIKTOROW — RYBNO	pow. Warszawa	Poland	R 53/F 10
CWC: 300 workers, Aug. 44—16. 1. 45 (PWCB).			
KORCZEW	pow. Warszawa	Poland	—
Forced labour camp: 400 Jews, 1941—Aug. 43 (PWCB).			
MLAWA	pow. Mlawa	Poland	R 54/K 58
Forced labour camp: 200 inmates, 1940—Jan. 45 (PWCB).			
CHOJNOWO	pow. Mlawa	Poland	—
Forced labour camp: 150 inmates, June—Nov. 40 (PWCB).			
CHODKOWO	pow. Makow Maz.	Poland	R 54/F 07
Forced labour camp: 200 inmates, Oct. 40—April 41 (PWCB).			
MAKOW MAZOWIECKY	pow. Makow Maz.	Poland	R 53/F 05
Forced labour camp: 190 inmates, 1940—44 (PWCB).			
NOWA WIES	pow. Makow Maz.	Poland	R 53/F 10
Forced labour camp: 400 inmates, 7. 1. 42—30. 3. 43 (PWCB).			

ROZAN	pow. Makow Maz.	Poland	—
Forced labour camp: 350 Jews, May—Aug. 43 (PWCB).			
JACIAZEK	pow. Makow Maz.	Poland	R 53/F 06
Forced labour camp: 400 inmates, Aug. 43—March 44 (PWCB).			
BIEDRZYCE — KOZIEGLOWY	pow. Makow Maz.	Poland	R 53/F 16
Forced labour camp: 100 inmates, 20. 10. 41—15. 5. 42 (PWCB).			
MALOWIDZ	pow. Przasnysz	Poland	R 54/F 09
CWC: 100 workers, in 1940 (PWCB).			
PRZASNYSZ	pow. Przasnysz	Poland	R 53/K 97
Forced labour camp: 100 inmates, 1941—43 (PWCB).			
STRZALKI	pow. Ostroleka	Poland	R 54/F 29
CWC: 350 workers, 15. 1. 44—17. 1. 45 (PWCB).			
LAZEK	pow. Ostroleka	Poland	R 54/F 38
Forced labour camp: 100 inmates, June 40—June 43 (PWCB).			
MALY PLOCK	pow. Lomza	Poland	R 54/A 60
CWC: 400 workers, earthwork, autumn—Dec. 44 (PWCB).			
CZERWONE	pow. Lomza	Poland	R 54/A 62
CWC: 150 pers., Dec. 44—20. 1. 45 (PWCB).			
RUTKI	pow. Lomza	Poland	S 54/F 99
CWC: 100 workers, 1942—July 44 (PWCB).			
ANDRYCHY	pow. Szczuczyn	Poland	R 54/A 73
Forced labour camp: 250 inmates, 5. 9.—27. 10. 44 (PWCB).			
GRAJEWO	pow. Szczuczyn	Poland	S 54/A 94
Forced labour camp: 180 inmates, July 41—21. 1. 45 (PWCB).			
BOGUSZE	pow. Szczuczyn	Poland	S 54/A 95
Forced labour camp: 1000 inmates, Oct. 42—July 44 (PWCB).			
DRESTWO	pow. Szczuczyn	Poland	S 54/B 15
CWC: 400 workers, earthwork, Oct.—Dec. 44 (PWCB).			
CHRUSLICE	pow. Radom	Poland	R 52/U 99
Forced labour camp: 600 Jews, 19. 8. 41—5. 5. 44 (PWCB).			

LESIOW	pow. Radom	Poland	R 52/L 10
	Forced labour camp: 700 Jews, 1942—Jan. 45 (PWCB). see also Radom.		
JEDLINSK	pow. Radom	Poland	R 52/L 00
	Forced labour camp: 2000 Jews, Dec. 42—Febr. 44 (PWCB).		
WOLA GOZDOWSKA	pow. Radom	Poland	—
	Forced labour camp: 150 inmates, April 41—March 43 (PWCB).		
RADOM	pow. Radom	Poland	R 52/Q 19
	see Jedlinsk 2000 Jews, see Lesiow 700 Jews, see Chruslice 600 Jews.		
	In autumn 1944, CC and Ghetto Radom were evacuated to Vaihingen/Enz (USFET memorandum).		
KACZKOWICE	pow. Radom	Poland	—
	Forced labour camps: 5000 Jews, 1941—July 44 100 inmates, 1941—July 44 (PWCB).		
KONARY	pow. Grojec	Poland	R 52/L 14
	CWC: 200 workers, earthwork, July—Aug. 44 (PWCB).		
OSTROLEKA	pow. Grojec	Poland	R 52/P 80
	CWC: 200 workers, earthwork, 22. 7.—Aug. 44 (PWCB).		
DEBNOWOLA	pow. Grojec	Poland	R 52/P 82
	CWC: 200 workers, earthwork, 25. 7.—1. 8. 44 (PWCB).		
ULENIEC	pow. Grojec	Poland	R 52/P 84
	Forced labour camp: 200 inmates, July—1. 8. 44 (PWCB).		
CHYZYNY	pow. Grojec	Poland	—
	Forced labour camp: 600 inmates, 1942—43 (PWCB).		
SIEDLINO	pow. Plonsk	Poland	R 53/K 62
	Forced labour camp: 250 inmates, 15. 5.—1. 9. 40 (PWCB).		
KUCHARY	pow. Plonsk	Poland	R 53/K 63
	Forced labour camp: 150 inmates, Nov. 40—Nov. 41 (PWCB).		
GRODZIEC	pow. Plonsk	Poland	R 53/K 51
	Forced labour camp: 200 inmates, 11. 7. 40—20. 2. 43 (PWCB).		

BOGUSZYN STARY	pow. Plonsk	Poland	R 53/K 51
Forced labour camp: 250 inmates, autumn 1940—Dec. 42 (PWCB).			
STARACHOWICE	pow. Ilza	Poland	R 52/Q 05
Forced labour camp: 5000 Jews, Oct. 42—summer 43. 3000 Jews, summer 43—July 1944. 100 inmates, 1943—spring 44 (PWCB).			
JOZEFOW	pow. Pulawy	Poland	R 52/Q 46
Ghetto: 250 Jews, 1. 5.—1. 9. 41 (PWCB). Forced labour camp: 800 Jews, 1. 4. 40—1. 3. 42 (PWCB).			
KAZIMIERZ DOLNY	pow. Pulawy	Poland	R 52/Q 68
Forced labour camp: 120 inmates, spring 40—Oct. 42 (PWCB).			
PULAWY	pow. Pulawy	Poland	R 52/Q 69
Forced labour camp: 200 Jews, 1942—43 (PWCB).			
GOLAP	pow. Pulawy	Poland	—
Forced labour camp: 100 Jews, in 1942 (PWCB).			
PONIATOWA	pow. Pulawy	Poland	R 52/Q 77
Forced labour camp: 18000 Jews, autumn 41—July 44 (PWCB).			
WYMYSLOW	pow. Pulawy	Poland	R 52/Q 77
Forced labour camp: 200 Jews, 1942—Nov. 43 (PWCB).			
STEZYCKA	pow. Garwolin	Poland	R 52/L 51
Forced labour camp: 150 Jews, April—June 43 (PWCB).			
IRENA	pow. Garwolin	Poland	R 52/L 61
Forced labour camps: "Lotwisko", 1000 Jews, May 41—23. 7. 44. "Most. Kol.", 200 Jews, May 42—June 43. "Ul. Lipowa", 200 Jews, Aug. 42—Febr. 43. "St. Kol. Deblin", 120 Jews, Oct. 42—June 43 (PWCB).			
GARWOLIN	pow. Garwolin	Poland	R 52/L 45
Forced labour camp: 250 inmates, Dec. 42—23. 7. 44 (PWCB).			
SEROCK	pow. Pultusk	Poland	R 53/F 02
Forced labour camp: 200 inmates, May 40—May 44 (PWCB).			
STUDZIANKI	pow. Pultusk	Poland	R 53/K 82
CWC: 400 workers, 25. 11. 44—17. 1. 45 (PWCB).			

NASIELSK	pow. Pultusk	Poland	R 53/K 82
Forced labour camp: 150 inmates, 1941—43 (PWCB).			
KARCZEW	pow. Sokolow	Poland	—
Forced labour camp: 400 Jews, 1942—43 (PWCB).			
MALISZEWA Nowa	pow. Sokolow	Poland	R 53/F 72
Forced labour camp: 300 inmates, Aug. 41—Aug 44 (PWCB).			
TREBLINKA	pow. Wogrow	Poland	R 53/F 73
CC and extermination camp, 1. 6. 42—Nov. 43 (PWCB).			
Forced labour camp: 1000 inmates, 1940—44 (PWCB).			
KRZESK	pow. Siedlce	Poland	—
Forced labour camp: 100 Jews, May—autumn 40 (PWCB).			
SIEDLCE	pow. Siedlce	Poland	R 53/L 88
Prison: (BNTB).			
Forced labour camps:			
"Koszary", 100 Jews, beginning 40—Oct. 42.			
"Warszt. Kol.", 500 Jews, Jan. 41—March 43.			
at Brzeska, 2000 Jews, autumn 41—Oct. 42.			
"Zwirownia", 300 Jews, autumn 41—14. 5. 42 (PWCB).			
LEKI	pow. Siedlce	Poland	—
Forced labour camp: 350 Jews, 1941—43 (PWCB).			
STOK RUSKI	pow. Siedlce	Poland	S 53/L 98
CWC: 1000 workers, 1940—42 (PWCB).			
KLIMONTY	pow. Siedlce	Poland	S 53/M 08
Forced labour camp: 1000 Jews, 1. 3.—July 42 (PWCB).			
MARKUSZOW	woj. Lubelskie	Poland	R 52/Q 89
Forced labour camp: 100 Jews, 30. 5.—2. 9. 42 (PWCB).			
AUGUSTOW	pow. Augustow	Poland	S 54/B 36
Forced labour camp: 120 inmates, Sept. 41—July 44 (PWCB).			
NOWY DWOR	pow. Sokolka	Poland	S 54/B 64
Forced labour camp: 120 Jews, May—Nov. 42 (PWCB).			
SOKOLKA	pow. Sokolka	Poland	S 54/B 62
Forced labour camp: 150 inmates, 1942—44 (PWCB).			

SUWALKI	pow. Suwalki	Poland	S 55/B 29
CWC's: 100 workers, Febr. 40—Sept. 44. "ciegielnia", 200 workers, March 40—July 44 (PWCB).			
BIALYSTOK	pow. Biala Podl.	Poland	S 54/G 49
Prison: (BNTB). CWC: (NNTB).			
BIELSK PODLASKI	pow. Bielsk Podlaski	Poland	S 53/G 45
Forced labour camp: 100 inmates, autumn 41—16. 7. 44 (PWCB).			
LESNA PODLASKA	pow. Biala Podlaska	Poland	S 53/M 37
Forced labour camp: 400 Jews, 1940—41 (PWCB).			
MALAZEWICZE	pow. Biala Podlaska	Poland	—
Forced labour camp: 800 Jews, autumn 42—May 44 (PWCB).			
MALASZEWICE DUZE	pow. Biala Podlaska	Poland	—
Forced labour camp: 1000 Jews, autumn 42—Febr. 44 (PWCB).			
BIALA PODLASKA	pow. Biala Podlaska	Poland	S 53/M 46
-Forced labour camp: 3000 Jews, 1941—17. 12. 42 (PWCB).			
SZENEJKI	pow. Biala Podlaska	Poland	—
Forced labour camp: 300 Jews, spring 41—autumn 42 (PWCB).			
ROSSOSZ	pow. Biala Podlaska	Poland	S 52/M 44
Forced labour camp: 250 Jews. 26. 1.—1. 10. 40 (PWCB).			
ROGOZNICA	pow. Radzyn	Poland	S 53/M 26
Forced labour camp: 400 Jews, May 41—15. 3. 44 (PWCB).			
OSSOWA	pow. Radzyn	Poland	S 52/M 24
Forced labour camp: 400 Jews, June 41—Oct. 43 (PWCB).			
OSOWA	pow. Wlodawa	Poland	S 52/M 70
Forced labour camp: 1000 Jews, 1941—43 (PWCB).			
WLODAWA	pow. Wlodawa	Poland	S 52/M 71
Forced labour camp: 600 Jews, autumn 42—30. 4. 43 (PWCB).			
KRYCHOW	pow. Wlodawa	Poland	—
Forced labour camp: 2500 inmates, beginning 42—March 44 (PWCB).			

SOBIBOR	pow. Wlodawa	Poland	S 52/M 80
CC and extermination camp, March 42—Nov. 43 (PWCB).			
DOROHUSK	pow. Chelm	Poland	S 52/R 97
Forced labour camp: 300 Jews, 1940—41 (PWCB).			
KANIE	pow. Chelm	Poland	S 52/R 46
Forced labour camp: 150 Jews, 1941 (PWCB).			
CZERNIEJOW	pow. Chelm	Poland	S 52/R 86
Forced labour camp: 200 Jews, in 1941 (PWCB).			
TRAWNIKI	pow. Lublin	Poland	S 52/R 36
Transit camp: for Jews (Duesseldorf Gestapo files, on 22. 4. 42).			
IZBICA	pow. Krasnystaw	Poland	S 51/R 54
Transit camp: for Jews (Gestapo transport list).			
LUBLIN	pow. Lublin	Poland	S 52/R 08
CC "Majdanek", established from a former PoW camp on 9. 4. 43, address: Lublin, Gartenstr. 12. "Lagerstufe I und II"; departments for men and women (photocopies of the Duesseldorf Gestapo acts). On 6. 11. 42 transports of Jewish CC inmates were ordered from Germany to "Kriegsgefangenenlager Lublin" (photocopies of the Duesseldorf Gestapo files). The CC was closed in July 44 (PWCB).			
Prison: Wehrmachtgefaengnis, Lindenstr. 4 (BNTB).			
WIERZCHOWISKA	pow. Krasnik	Poland	S 51/Q 92
Forced labour camp: 400 inmates, 1940—42 (PWCB).			
JANOW LUBELSKI	pow. Krasnik	Poland	S 51/R 02
Forced labour camp: 1000 inmates, 1941—43 (PWCB).			
LYSAKOW	pow. Krasnik	Poland	R 51/Q 82
Forced labour camp: 160 inmates, 15. 3. 41—20. 4. 43 (PWCB).			
BUDZYN	pow. Krasnik	Poland	R 51/Q 84
CCKdo. of Majdanek, 3000 pris., Oct. 42—6. 7. 44 (PWCB).			
TARNOGROD	pow. Bilgoraj	Poland	S 51/W 28
Forced labour camp: 1500 inmates, 27. 5.—21. 7. 44 (PWCB).			
DYLE	pow. Bilgoraj	Poland	S 51/R 20
Forced labour camp: 250 inmates, Dec. 41—Dec. 42 (PWCB).			

PRZYCHOJEC	pow. Lancut	Poland	S 51/V 97
CWC: 400 workers, earthwork, April—22. 7. 44 (PWCB).			
WIERZAWICE	pow. Lancut	Poland	S 51/W 06
CWC: 400 workers, earthwork, 20. 5. —23. 7. 44 (PWCB).			
SIECLANKA	pow. Lancut	Poland	R 51/V 46
CWC: 400 workers, earthwork, April—22. 7. 44 (PWCB).			
ZARUDZIE	pow. Zamosc	Poland	—
Forced labour camp: 150 inmates, 19. 11. 41—1. 12. 42 (PWCB).			
JAROSLAW	pow. Jaroslaw	Poland	S 51/W 24
Prison: (BNTB).			
RACHANIE	pow. Tomaszow Lub.	Poland	S 51/R 70
Forced labour camp: 1000 Jews, April—Aug. 43 (PWCB).			
TYSZOWCE	pow. Tomaszow Lub.	Poland	S 51/R 91
Forced labour camp: 500 Jews, 1940—autumn 1941 (PWCB).			
BELZEC	pow. Tomaszow Lub.	Poland	S 51/W 78
CC and extermination camp, Nov. 41—June 43 (PWCB), under an "Einsatzkdo. of the RSD" (US Army interrogation).			
MKRCZE	pow. Hrubieszow	Poland	S 51/S 01
Forced labour camp: 3000 inmates, June—Oct. 40 (PWCB).			
RAWA RUSKA	USSR.	—	S 51/W 86
Forced labour camp: of Jews (BNTB).			
RZEPLIN	pow. Jaroslaw	Poland	S 50/V 36
CWC: 300 workers, earthwork, May—24. 7. 44 (PWCB).			
RADYMNO	pow. Jaroslaw	Poland	S 50/V 56
Forced labour camp: 200 Jews, autumn 42—March 43 (PWCB).			
ROZBORZ DLUGI	pow. Jaroslaw	Poland	R 50/V 36
CWC: 720 workers, earthwork, 13. 4.—25. 7. 44 (PWCB).			
SWIEBODNIA	pow. Jaroslaw	Poland	R 50/V 26
CWC: 600 workers, earthwork, 2. 5. 44—24. 7. 44 (PWCB).			

DALESZYCE	pow. Kielce	Poland	R 51/U 82
CWC: 150 workers, earthwork, 25. 9. 44—30. 11. 44 (PWCB).			
KIELCE	pow. Kielce	Poland	R 51/U 73
Forced labour camps: "Hasag Granat", 500 Jews, 2. 9. 42—20. 8. 44.			
"Henrykow", 400 Jews, 1. 6. 43—1. 8. 44.			
"Ludwikow", 330 Jews, 1. 6. 43—1. 8. 44.			
"Stolarska", 1360 Jews, 30. 8. 42—1. 4. 43 (PWCB).			
HOLENDRY	pow. Kielce	Poland	R 51/U 81
CWC: 180 workers, earthwork, Nov. 44—6. 1. 45 (PWCB).			
PRZENSZYN	pow. Opatow	Poland	—
CWC: 120 workers, earthwork, 15. 10. 44—3. 1. 45 (PWCB).			
OSTROWIEC	pow. Opatow	Poland	R 51/Q 24
Forced labour camp: 2000 Jews, 1. 4. 43—3. 8. 44 (PWCB).			
BODZECZOW	pow. Opatow	Poland	R 51/Q 34
Forced labour camp: 200 Jews, 1. 10. 42—16. 2. 43 (PWCB).			
CWC: 200 workers, earthwork, Oct. 44—15. 1. 45 (PWCB).			
MOMINA	pow. Opatow	Poland	R 51/Q 13
CWC: 200 workers, earthwork, 10. 11. 44—12. 1. 45 (PWCB).			
SANDOMIERZ	pow. Sandomierz	Poland	R 51/Q 51
Forced labour camp: 350 Jews, Oct. 42—Jan. 44 (PWCB).			
KLIMONTOW	pow. Sandomierz	Poland	R 51/Q 31
Forced labour camp: 300 inmates, Sept. 43—autumn 44 (PWCB).			
RACLAWICE	pow. Nisko	Poland	R 51/V 89
CWC: 370 workers, earthwork, 20. 5.—28. 7. 44 (PWCB).			
ZARZECZE	pow. Nisko	Poland	R 51/V 89
Forced labour camp: 800 Jews, Nov. 39—Apr. 40 (PWCB).			
GLOGOW	pow. Rzeszow	Poland	R 51/V 65
Forced labour camp: 120 Jews, 20. 7.—25. 10. 42 (PWCB).			
JESIONKA	pow. Rzeszow	Poland	—
Forced labour camp: 300 Jews, June—autumn 42 (PWCB).			

PRZYLEK	pow. Kolbuszowa	Poland	R 51/V 47
Forced labour camp: 300 Jews, summer 42—winter 43 (PWCB).			
HUTA KOMOROWSKA	pow. Kolbuszowa	Poland	R 51/V 58
CWC: 700 workers, April 41—25. 7. 44 (PWCB).			
MIELEC	pow. Mielec	Poland	R 51/V 37
CC Kdo. of Plaszow working for the Heinkel-Werke (US Army CC Handbook).			
CYRANKA	pow. Mielec	Poland	R 51/V 37
Forced labour camp: 2000 inmates, March 42—Aug. 44 (PWCB).			
DEBICA	pow. Debica	Poland	R 51/V 24
Forced labour camp: 1600 Jews, July 42—April 43 (PWCB).			
MOKRZEC	pow. Debica	Poland	R 51/V 24
CWC: 200 workers, Oct.—Dec. 44 (PWCB).			
LIPINY	pow. Debica	Poland	R 51/V 24
CWC: 100 workers, earthwork, 1. 11. 44—15. 1. 45 (PWCB).			
PUSTKOW	pow. Debica	Poland	R 51/V 35
Forced labour camp: 300 inmates, autumn 41—July 44 (PWCB).			
PILZNO	pow. Debica	Poland	R 50/Z 48
CWC: 150 workers, earthwork, 1. 9. 44—16. 1. 45 (PWCB).			
GOLECZYNA	pow. Debica	Poland	R 50/Z 58
CWC: 100 workers, earthwork, Sept.—Dec. 44 (PWCB).			
SLUPIA	pow. Stopnica	Poland	R 51/V 08
Forced labour camp: 180 inmates, 1941—44 (PWCB).			
BIECHOW-DOLNE	pow. Stopnica	Poland	R 51/Z 98
Forced labour camp: 200 Jews, spring—autumn 42 (PWCB).			
PIESTRZEC	pow. Stopnica	Poland	R 51/Z 98
CWC: 150 workers, earthwork, 1. 10. 44—21. 1. 45 (PWCB).			
JARZABKI	pow. Stopnica	Poland	R 51/U 90
CWC: 450 workers, earthwork, 1. 10. 44—12. 1. 45 (PWCB).			
RACZYCE	pow. Stopnica	Poland	T 51/U 90
CWC: 700 workers, earthwork, 20. 10. 44—12. 1. 45 (PWCB).			

KAZIMIERZA WIELKA	pow. Pinczow	Poland	R 51/Z 66
	Forced labour camp: 100 inmates, 1940—45 (PWCB).		
WISLICA	pow. Pinczow	Poland	R 51/Z 69
	CWC: 140 workers, earthwork, Nov. 44—12. 1. 45 (PWCB).		
PINCZOW	pow. Pinczow	Poland	R 51/Z 69
	CWC: 500 workers, earthwork, Sept. 44—Jan. 45 (PWCB).		
MLODANY DUZE	pow. Pinczow	Poland	R 51/Z 69
	CWC: 1000 workers, earthwork, 20. 8. 44—12. 1. 45 (PWCB).		
MICHALOW	pow. Pinczow	Poland	R 51/Z 69
	CWC: 600 workers, earthwork, 8. 8. 44—14. 1. 45 (PWCB).		
KONIECMOSTY	pow. Pinczow	Poland	R 51/Z 77
	CWC: 700 workers, earthwork, 15. 10. 44—12. 1. 45 (PWCB).		
ZURAWNIKI	pow. Pinczow	Poland	R 51/Z 78
	CWC: 150 workers, earthwork, Oct. 44—12. 1. 45 (PWCB).		
CHOTEL	pow. Pinczow	Poland	R 51/Z 78
	CWC: 250 workers, earthwork, Oct. 44—12. 1. 45 (PWCB).		
OTFINOW	pow. Dabrowa Tarnow	Poland	R 51/Z 86
	CWC: 4000 workers, earthwork, Oct. 44—14. 1. 45 (PWCB).		
GREBOSZOW	pow. Dabrowa Tarnow	Poland	R 51/Z 86
	CWC: 180 workers, earthwork, Dec. 44—13. 1. 45 (PWCB).		
MIECHOWICE MALE	pow. Dabrowa Tarnow	Poland	R 51/Z 86
	CWC: 400 workers, earthwork, Sept. 44—14. 1. 45 (PWCB).		
MIECHOWICE WIELKIE	pow. Dabrowa Tarnow	Poland	R 51/Z 86
	CWC: 300 workers, earthwork, Sept. 44—14. 1. 45 (PWCB).		
DEMBLIN	pow. Dabrowa Tarnow	Poland	R 51/Z 86
	CWC: 200 workers, earthwork, Nov. 44—14. 1. 45 (PWCB).		
WIERZCHOSLAWICE	pow. Tarnow	Poland	R 51/Z 84
	CWC: 500 workers, earthwork, 5. 8. 44—17. 1. 45 (PWCB).		
OSTROW	pow. Tarnow	Poland	R 51/Z 94
	CWC: 400 workers, earthwork, 5. 8. 44—17. 1. 45 (PWCB).		

TARNOW	pow. Tarnow	Poland	R 51/Z 94
CWC: 1100 workers, earthwork, Aug. 44—Jan. 45 (PWCB).			
KASNA DOLNA	pow. Tarnow	Poland	R 50/Z 16
CWC: 600 workers, earthwork, Sept. 44—15. 1. 45 (PWCB).			
SIEMIECHOW	pow. Tarnow	Poland	R 50/Z 17
CWC: 600 workers, Febr. 44—20. 1. 45 (PWCB).			
LICHWIN	pow. Tarnow	Poland	R 50/Z 17
CWC: 1300 pris., Nov. 44—18. 1. 45 (PWCB).			
GROMNIK	pow. Tarnow	Poland	R 50/Z 26
CWC: 950 pris., 25. 9. 44—12. 1. 45 (PWCB).			
TUCHOW	pow. Tarnow	Poland	R 50/Z 27
CWC's: "Rynek", 250 workers, earthwork, Sept. 44—12. 1. 45 in ul. Panska, 600 workers, earthwork, Oct. 44—12. 1. 45 "Sokol", 450 workers, earthwork, Oct. 44—12. 1. 45 (PWCB).			
GNOJNIK	pow. Brzesko	Poland	R 50/Y 97
CWC: 500 workers, earthwork, 15. 8. 44—16. 1. 45 (PWCB).			
FILIPOWICE	pow. Brzesko	Poland	R 50/Z 06
CWC: 200 workers, earthwork, 1944—45 (PWCB).			
CZCHOW	pow. Brzesko	Poland	R 60/Z 06
CWC: 6000 workers, earthwork, 5. 8. 44—16. 1. 45 (PWCB).			
ZABAWA	pow. Brzesko	Poland	Q 50/Y 69
CWC: 500 workers, earthwork, 10. 9. 44—28. 10. 44 (PWCB).			
WISNICZ NOWY	pow. Bochnia	Poland	R 50/Y 98
CWC: 1080 workers, earthwork, 1944—45 (PWCB).			
RZEZAWA	pow. Bochnia	Poland	R 50/Y 98
CWC: 120 workers, earthwork, 15. 10. 44—18. 1. 45 (PWCB).			
KOBYLE	pow. Bochnia	Poland	R 50/Y 98
CWC: 1000 workers, earthwork, 15. 10. 44—18. 1. 45 (PWCB).			
STARY SACZ	pow. Nowy Sacz	Poland	R 50/Y 94
CWC's: 250 workers, earthwork, July 44—17. 1. 45 300 workers, earthwork, Aug. 44—Jan. 45 (PWCB).			

CHELMIEC	pow. Nowy Sącz	Poland	R 50/Y 94
CWC: 250 workers, earthwork, July 44—17. 1. 45 (PWCB).			
RYTRO	pow. Nowy Sącz	Poland	—
Forced labour camp: 100 Jews, Febr. 43—Febr. 44 (PWCB).			
LIPIE	pow. Nowy Sącz	Poland	R 50/Z 05
Forced labour camp: 100 Jews, autumn 42—spring 43 (PWCB).			
NOWY SACZ	pow. Nowy Sącz	Poland	R 50/Z 06
Forced labour camp: 150 inmates, end 42—autumn 44 (PWCB).			
ROZNOW	pow. Nowy Sącz	Poland	R 50/Z 06
Forced labour camp: 100 Jews, summer—Dec. 42 (PWCB).			
CWC: 800 workers, earthwork, 2. 9. 44—17. 1. 45 (PWCB).			
GRYBOW	pow. Nowy Sącz	Poland	R 50/Z 14
CWC: 200 workers, earthwork, Oct. 44—15. 1. 45 (PWCB).			
WOJNAROWA	pow. Nowy Sącz	Poland	R 50/Z 15
CWC: 500 workers, earthwork, Aug. 44—16. 1. 45 (PWCB).			
LIMANOWA	pow. Limanowa	Poland	R 50/Y 85
Forced labour camp: 190 Jews, 18. 8.—5. 11. 42 (PWCB).			
DUKLA	pow. Krosno	Poland	R 50/Z 73
Forced labour camp: 140 Jews, 13. 8. 42—15. 11. 42.			
170 Jews, 13. 8. 42—14. 12. 42 (PWCB).			
KROSNO	pow. Krosno	Poland	R 50/Z 74
Forced labour camp: 120 Jews, 25. 8. 42—27. 1. 44 (PWCB).			
CIESZYNA	pow. Krosno	Poland	R 50/Z 66
Forced labour camp: 100 inmates, Nov. 43—2. 2. 44 (PWCB).			
FRYSZTAK	pow. Krosno	Poland	R 50/Z 66
Forced labour camp: 2000 Jews, July—Nov. 41 (PWCB).			
PRZECZYCA	pow. Jasło	Poland	R 50/Z 57
CWC: 250 workers, earthwork, 15. 9. 44—15. 1. 45 (PWCB).			
SZEBNIE	pow. Jasło	Poland	R 50/Z 65
Forced labour camp: 5000 inmates, 1940—Aug. 44 (PWCB).			

STROZE	pow. Gorlice	Poland	R 50/Z 06
CWC: 120 workers, earthwork, Sept. 44—15. 1. 45 (PWCB).			
JEZOW WILCZYSKA	pow. Gorlice	Poland	R 50/Z 15
CWC: 450 workers, earthwork, 2. 8. 44—14. 1. 45 (PWCB).			
BOBOWA	pow. Gorlice	Poland	R 50/Z 15
CWC's: "Szkola powozeczna", 380 workers, earthwork, Sept. 44—14.1. 45. 200 workers, earthwork, Oct. 44—14. 1. 45 (PWCB).			
SIEDLISKA	pow. Gorlice	Poland	R 50/Z 25
CWC: 200 workers, earthwork, Sept.—Oct. 44 (PWCB).			
GORLICE	pow. Gorlice	Poland	R 50/Z 34
CWC: 1000 workers, 1940—45 (PWCB).			
NOWY TARG	pow. Nowy Targ	Poland	Q 50/Y 53
Forced labour camp: 100 Jews, 30. 8. 42—25. 5. 43 (PWCB).			
ZAKOPANE	pow. Nowy Targ	Poland	Q 50/Y 41
CCKdo. of Plaszow (Pol. Red Cross), working at the water power plant (US Army CC Handbook). CWC: 200 workers, summer 41—Sept. 42 (PWCB).			
CIESZYN	pow. Cieszyn	Poland	Q 50/O 78
Prison: (BNTB). CWC: (BNTB).			
ZEBRZYDOWICE	pow. Cieszyn	Poland	Q 50/O 79
Forced labour camp: 200 Jews, Aug. 42—March 44 (PWCB).			
GOLESZOW — Gollschau	pow. Cieszyn	Poland	Q 50/O 88
CCKdo. of Auschwitz, 1200 pris., 1941—19. 1. 45 (PWCB), in a cement factory (BNTB).			
MIKUSZOWICE	pow. Biala Krak	Poland	Q 50/X 87
Forced labour camp: 100 inmates, winter 40—Febr. 45 (PWCB).			
JAWISZOWICE	pow. Biala Krak	Poland	Q 50/X 99
CCKdo. of Auschwitz, working in coal mines (US Army CC Handbook; Judge Jan Sehn; BNTB; not mentioned by PWCB). CWC: in the coal mines, 3500 men (BNTB).			
RAJSKO	pow. Biala Krak	Poland	Q 51/Y 74
CCKdo. of Auschwitz (PWCB).			



RYDULTOWY	pow. Rybnik	Poland	Q 51/Y 55
	CCKdo. of Auschwitz, see Czernica.		
ZORY	pow. Rybnik	Poland	Q 51/Y 34
	CWC: 550 workers, 1941—45 (PWCB).		
PSZCZYNA	pow. Pszczyna	Poland	Q 50/X 79
	CWC: (BNTB).		
STARA KUZNICA — Althammer	pow. Pszczyna	Poland	Q 51/Y 46
	CCKdo. of Auschwitz, 500 pris., 1942—45 (PWCB).		
WYRY	pow. Pszczyna	Poland	Q 51/Y 55
	CWC: 100 workers, 1941—Jan. 45 (PWCB).		
KOBIOR	pow. Pszczyna	Poland	Q 51/Y 54
	CCKdo. of Auschwitz, 200 pris., 1942—43 (PWCB).		
ORMONTOWICE	pow. Pszczyna	Poland	Q 51/Y 36
	CWC: 750 workers, April 41—June 42 (PWCB).		
LUKOW	pow. Pszczyna	Poland	Q 51/Y 15
	CCKdo. of Auschwitz, see Czernica.		
ORZESZE	pow. Pszczyna	Poland	Q 51/Y 45
	CWC: 400 workers, 1941—45 (PWCB).		
ZAWISC	pow. Pszczyna	Poland	Q 51/Y 45
	CWC: 100 workers, 1943—45 (PWCB).		
LAZISKA GORNE	pow. Pszczyna	Poland	Q 51/Y 45
	Forced labour camp: 150 Jews, March—Dec. 42 (PWCB).		
BOZE DARY	pow. Pszczyna	Poland	Q 50/X 79
	Forced labour camp: 600 inmates, 1943—18. 1. 45 (PWCB).		
HARMEZE	pow. Pszczyna	Poland	Q 51/Y 64
	CCKdo. of Auschwitz (Judge Jan Sehn), see Plawy (Polish War Crimes Comm.).		
PLAWY	pow. Pszczyna	Poland	Q 51/Y 64
	situated 1½ miles SSW of its twin village Harmeze		
	CCKdo. of Auschwitz, Harmeze-Plawy (Polish Red Cross; Judge Jan Sehn; BNTB).		

- HOLDUNOW-SMARDZOWICE pow. Pszczyna Poland Q 51/Y 65  
 Forced labour camp: of 500 Jews, March 42—spring 43 (PWCB).
- LEDZIMY — Lawki pow. Pszczyna Poland Q 51/Y 65  
 Ledzimy is situated 3 miles N of Bierun, and Lawki is a small place 2½ miles further.  
 CCKdo. of Auschwitz, 1000 pris., 1943—Jan. 45 (PWCB).
- BIERUN — BERUNA pow. Pszczyna Poland Q 51/Y 65  
 CCKdo. of Auschwitz (BNTB), see Ledziny-Lawki.
- SWIETOCHLOWICE — Schwientochlowitz pow. Katowice Poland Q 51/Y 47  
 CCKdo. of Auschwitz, working for the "OSMAG" (US Army CC Handbook), plant "Eintrachtshuette" (Judge Jan Sehn), in the Heilgerstr. (BNTB), 1300 prisoners June 42—32. 1. 45 (PWCB).  
 Forced labour camp: "Florian Huette", 2800 inmates, Aug. 42—23. 1. 45 (PWCB).  
 CWC: 600 workers in the "Eintrachtshuette" — Huta Zgoda, 1943—Jan. 45 (PWCB; BNTB).
- SIEMIANOWICE pow. Katowice Poland Q 51/Y 57  
 CCKdo. of Auschwitz, working for the "Oberschlesische Geraetebau GmbH." (US Army CC Handbook) plant "Laurahuette", 1600 pris., 1943—23. 1. 45 (PWCB).
- CHORZOW pow. Chorzow Poland Q 51/Y 57  
 CCKdo. of Auschwitz in the "Koenigshuette" — Chrolewska Huta — (BNTB), 200 prisoners, March 44—Jan. 45 (PWCB).  
 CWC's: "szosa Kochlowicka", 2140 workers, 1943—Jan. 45  
 ul. Nowa, 150 workers, 1942—45  
 mine "Kleofas", 130 workers, 1943—Jan. 45 (PWCB).
- HAJDUKI I—II pow. Chorzow Poland Q 51/Y 57  
 CCKdo. of Auschwitz in "Bismarckhuette" (Judge Jan Sehn; BNTB).
- LAGIEWNIKI — Slaskie pow. Katowice Poland Q 51/Y 57  
 CCKdo. of Auschwitz, working for the "Hubertushuette" (Judge Jan Sehn), 200 prisoners, Sept. 44 to 15. 1. 45 (PWCB).  
 CWC: 800 workers, 1941—Jan. 45 (PWCB).
- LIPINY SLASKIE pow. Katowice Poland Q 51/Y 57  
 CWC: 290 workers, 1943—45 (PWCB).
- KATOWICE — Kattowitz pow. Katowice Poland Q 51/Y 57  
 Prisons: Strafgefängenenlager fuer Auslaender im Uhlenwinkel, Nikolaistr. 10 A  
 Jugendgefängnis im Uhlenwinkel (BNTB).  
 Disciplinary camp (BNTB), of 150 inmates, 1944—45 (PWCB).  
 CWC's: "Baildon Huette", 2000 workers, 1942—23. 1. 45  
 plant "Katowice", 900 workers, end 42—17. 1. 45  
 plant "Emineneja", 400 workers, 1942—45 (PWCB).



CONCENTRATION CAMP "AUSCHWITZ", originated at the beginning of 1940 by establishing a concentration camp in the suburb Zasole of Oswiecim, in part of the premises of the Polish Tobacco Monopoly and on the adjacent grounds; this camp grew gradually into a complex comprising the whole suburb Zasole and 10 more villages situated between the river Wisla — Vistula and the village Sola (PWCB).

In the autumn of 1941, work commenced on the construction of an extermination camp in the Brzezinka—Birkenau moorland. On 10. 7. 42, the establishment was announced of a women's section in Auschwitz.

In July 1943, there was a separate unit under the command of CC Auschwitz, called "Arbeits-erziehungslager Birkenau". The forms for administration of this Arbeitserziehungslager give no indication that it was connected with the CC administration. Release from this Arbeitserziehungslager was made only to the Gestapo. (Authorized forms for administration Oranienburg).

On 6. II. 43 an order was issued by the RSHA by which all Jewish prisoners in the CC's in Germany had to be transferred to Auschwitz and the "Kriegsgefangenenlager Lublin" (photocopies of the Gestapo acts in Duesseldorf).

Auschwitz I — Stammlager in Oswiecim — Auschwitz,

Auschwitz II — in Brzezinka — Birkenau and

Auschwitz III — Aussenlager, i. e. the administrative unit for the work details (PWCB).

On 25. II. 44 Birkenau was again united with the "Stammlager" and the Kdo. in Monowitz became Auschwitz III.

About 400000 prisoners were registered during the existence of the CC; the prisoners who went to extermination were not registered and are not comprised in this number; the main camp was liberated on 27. I. 45.

The registered prisoners had to work either in the Auschwitz complex or they were distributed over the so called "Aussenkommandos" — work details (PWCB), and Auschwitz supplied the manpower of slave labour to the industries lying in the territory covering the part of the former Sudetengau, East of Friedland, the part of the former Oberschlesien, South of the line Neustadt i. O.—Blechhammer, and the part of Poland lying South of the line Stara Kuznica—Trzebinia/Krak.

Kdos. of CC Auschwitz were:

Auschwitz — Oswiecim

Auschwitz II — Birkenau — Brzezinka

Auschwitz III — Monowice — Bunawerke

Blachownia — Blechhammer

Bobrek

Chorzow — Koenigshuette

Czechowice — Dzierzice and Vacuum

• Freudenthal — Bruental CSR (only Judge Jan Sehn)

Gleiwitz — Gliwice I, II, III, IV

Goleszow — Golleschau

Hadjuki I, II — Bismarckhuette

Harmeze — Harmenze

Huta Karolina — Charlottengrube near Czernica — Rybnik

Huta Ksiazeca — Fuerstengrube near Myslowice

Janina mine — Janinagrube in Libiaz Maly near Chrzanow

Jawiszowice

Jaworzno

Kobior

Lagiewniki Slaskie — Hubertushuette

Lagisza Cmentarna — Lagischagrube

Ledziny — Lawki

p t o.

Plawy  
 Prudnik — Neustadt  
 Rajsko  
 Rybnik  
 Siemianowice — Laurahuette  
 Sosnowice  
 Stara Kuznica near Zywiec — Pless  
 Stara Wies — Altdorf  
 Swietochlowice — Eintrachtshuette  
 Trzebinia  
 Wloclawek — Lesslau  
 Zabrze — Hindenburg.

DABROWA GORNICA	pow. Bedzin	Poland	Q 51/Y 77
CWC: 400 workers, Jan. 43—Febr. 45 (PWCB).			
ZARKI	pow. Zawiercie	Poland	—
Forced labour camp: 350 inmates, Sept. 44—17. 1. 45 (PWCB).			
MIERZECICE	pow. Zawiercie	Poland	Q 51/Y 69
CWC: 5000 workers, 1942—45 (PWCB).			
LAZY	pow. Zawiercie	Poland	Q 51/Y 88
Forced labour camp: 420 Jews, 1941—beginning 44 (PWCB).			
LANY WIELKIN	pow. Olkusz	Poland	Q 51/Z 19
CWC: 1500 workers, earthwork, 25. 8. 44—14. 1. 45 (PWCB).			
LANY MALE	pow. Olkusz	Poland	Q 51/Z 19
CWC: 1500 workers, earthwork, 25. 8. 44—14. 1. 45 (PWCB).			
CHYZASTOWICE	pow. Olkusz	Poland	Q 51/Z 07
CWC: 500 workers, earthwork, Aug. 44—17. 1. 45 (PWCB).			
MICHALOWKA	pow. Olkusz	Poland	Q 51/Z 07
CWC: 8000 workers, earthwork, Aug. 44—17. 1. 45 (PWCB).			
MALOSZYCZE	pow. Olkusz	Poland	Q 51/Y 97
CWC: 300 workers, earthwork, Aug. 44—14. 1. 45 (PWCB).			
ZARNOWIEC	pow. Olkusz	Poland	Q 51/Y 97
CWC's: in the synagogue, 350 workers, earthwork, 11. 10. 44—14. 1. 45 200 workers, earthwork, 3. 9. 44—14. 1. 45 (PWCB).			

RZEDKOWICE	pow. Olkusz	Poland	Q 51/T 90
CWC: 3000 workers, earthwork, 1. 7. 44—28. 9. 44 (PWCB).			
PODLESICE	pow. Olkusz	Poland	Q 51/Z 18
CWC: 2000 workers, earthwork, 15. 9. 44—18. 1. 45 (PWCB).			
ZERKOWICE	pow. Olkusz	Poland	Q 51/Y 99
CWC: 2000 workers, earthwork, 10. 8. 44—18. 1. 45 (PWCB).			
GRODEK	pow. Wloszczowa	Poland	Q 51/U 01
CWC: 2000 workers, earthwork, 11. 8. 44—14. 1. 45 (PWCB).			
KRASOCIN	pow. Wloszczowa	Poland	Q 51/U 33
CWC: 2000 workers, earthwork, 5. 8. 44—12. 1. 45 (PWCB).			
OLESZNO	pow. Wloszczowa	Poland	Q 51/U 34
CWC: 2000 workers, earthwork, 1. 8. 44—13. 1. 45 (PWCB).			
SZCZEKOCINE	pow. Wloszczowa	Poland	Q 51/U 11
CWC's: 600 workers, earthwork, 15. 8. 44—15. 1. 45 "DWOR", 800 workers, earthwork, 15. 8. 44—15. 1. 45 (PWCB).			
TEGOBORZ	pow. Wloszczowa	Poland	Q 51/U 11
CWC: 4000 workers, earthwork, 28. 7. 44—16. 1. 45 (PWCB).			
WLOSZCZOWA	pow. Wloszczowa	Poland	Q 51/U 23
Forced labour camp: 200 pris., 1. 5. 43—Aug. 44 (PWCB).			
CHRZANOW — Krenau	pow. Chrzanow	Poland	Q 51/Y 85
CCKdo. of Auschwitz, see Libiaz Maly. Prison: (BNTB).			
TRZEBINIA	pow. Chrzanow	Poland	Q 51/Y 95
CCKdo. of Auschwitz (Judge Jan Sehn; Pol. Red Cross; BNTB; VVN), 700 Jews forced to work 1942 to 21. 1. 45 (PWCB).			
JAWORZNO	pow. Chrzanow	Poland	Q 51/Y 76
CCKdo. of Auschwitz, established April 43 (PWCB), called Kdo. "Neudachs" after 30. 7. 43 (Judge Jan Sehn), average strength 4500 pris., liberated on 20. 1. 45 (PWCB).			
LIBIAZ MALY	pow. Chrzanow	Poland	Q 51/Y 75
The village is situated 4½ miles SW of Chrzanow and 3½ miles E of Chelmek; the railway station is half-way between Libiaz and Chelmek, Chrzanow is the next town. CCKdo. of Auschwitz, working in the Janinagrube (Judge Jan Sehn), between Chelmek (US Army CC Handbook) and Libiaz Maly; 1000 pris., 1942—12. 1. 45 (PWCB).			

CHELMEK	pow. Chrzanow	Poland	Q 51/Y 75
	CCKdo. of Auschwitz, see Libiaz Maly.		
PLASZOW	pow. Krakow	Poland	Q 51/Z 24
	The disciplinary camp Plaszow, established Dec. 42, 25000 inmates (PWCB) was transformed into a CC without political department on 14. 5. 44 (photocopies of the Duesseldorf Gestapo files). Nevertheless, CC inmates may have been transferred to the Plaszow camp before that date (Trf. list from Mauthausen on 23. 3. 44). The camp was liberated on 15. 1. 45 (PWCB).		
	Kdos. of CC Plaszow were:		
	Inowroclaw — Hohensalza		
	Krakow		
	Mielec		
	Wieliczka		
	Zakopane.		
PROKOCIM	pow. Krakow	Poland	Q 51/Z 24
	Forced labour camp: 1700 Jews, 1942—autumn 1943 (PWCB).		
MOGIŁA	pow. Krakow	Poland	Q 51/Z 34
	Forced labour camp: 300 Jews, Jan. 44—16. 1. 45 (PWCB).		
WIELICZKA	pow. Krakow	Poland	Q 50/Y 59
	CCKdo. of Plaszow (Pol. Red Cross), working for the Heinkel-Werke (US Army CC Handbook); 6000 Jews were forced to work here from spring—Sept. 44 (PWCB).		
MIESKA GORKA — Goerchen	pow. Rawicz	Poland	P 52/C 37
	Forced labour camp: 300 inmates, 1. 10. 41—19. 1. 45 (PWCB).		
DUBIN	pow. Rawicz	Poland	P 52/C 57
	Forced labour camp: 200 Jews, June 41—Aug. 43 (PWCB).		
PAWLOWO	pow. Rawicz	Poland	P 52/C 58
	Forced labour camp: 120 Jews, June 41—Aug. 43 (PWCB).		
DZIECZYNA	pow. Gostyn	Poland	P 52/C 28
	Forced labour camp: 150 Jews, April—Sept. 43 (PWCB).		
KROTOSZYN — Krotoschin	pow. Krotosczyn	Poland	P 52/C 68
	Prison: (BNTB).		
JANISLAWICE — Johannisdorf	pow. Ostrow	Poland	P 52/C 76
	CWC: 150 workers, Sept. 41—43 (PWCB).		
KALKOWSKIE	pow. Ostrow	Poland	P 52/C 86
	CWC: 100 workers, March—Oct. 42 (PWCB).		

KOCINA — Kotzine	pow. Ostrow	Poland	P 52/C 86
CWC: 120 workers, 1941—20. 3. 44 (PWCB).			
CZARNYLAS — Schwarzwald	pow. Ostrow	Poland	P 52/C 96
CWC: 100 workers, 1941—20. 3. 44 (PWCB).			
SZKLARKA — Luisenthal	pow. Ostrow	Poland	P 52/C 96
CWC: 130 workers, July 1941—Nov. 42 (PWCB).			
OSTROW	pow. Ostrow	Poland	P 52/C 98
Forced labour camp: 600 inmates, June 43—March 44 (PWCB).			
BINIEW	pow. Ostrow	Poland	P 52/C 99
CWC: 100 workers, Aug.—Oct. 43 (PWCB).			
GRUDZIELEC	pow. Ostrow	Poland	P 52/X 90
Forced labour camp: 100 Jews, Aug. 42—March 43 (PWCB).			
CWC: 100 workers, billeted in the school, May—Aug. 34 (PWCB).			
LASEW	pow. Jarocin	Poland	—
Forced labour camp: 150 inmates, 25. 2. 42—May 45 (PWCB).			
PLESZEW — Pleschen	pow. Jarocin	Poland	P 52/X 81
Prison: Gerichtsgefängnis (BNTB).			
Forced labour camp: 130 inmates, May 44—Jan. 45 (PWCB).			
KALISZ — Kalisch	pow. Kalisz	Poland	P 52/N 94
Prison: Litzmannstaedterstr. 2 (BNTB).			
STAWISZYN	pow. Kalisz	Poland	P 52/O 05
Forced labour camp: 100 Jews, July 41—Jan. 42 (PWCB).			
BILGORAJ	Bilgoraj—Lubelskie	Poland	—
Resettlement and transit center — Durchgangs- und Umsiedlungslager — established April 44, closed Dec. 44, capacity 10000 people (PWCB).			
GORZYCZKI	Rybnik—Slasko-Dabrowskie	Poland	—
Transit and resettlement center — Durchgangs- und Umsiedlungslager — established 1940, closed 1942, capacity 1200 people (PWCB).			
GRUDZIADZ	Grudziadz—Bydgoskie	Poland	—
Transit and resettlement center — Durchgangs- und Umsiedlungslager — established Sept. 39, closed 1942, capacity 5000 people (PWCB).			

INOWROCLAW	Inowroclaw—Bydgoskie	Poland	—
Transit and resettlement center — Durchgangs- und Umsiedlungslager — established Jan. 40, closed April 44, capacity 800 people (PWCB).			
KONSTANTYNOW	Lodz—Lodzkie	Poland	—
Transit and resettlement center — Durchgangs- und Umsiedlungslager — Jan. 40, closed April 44, capacity 800 people (PWCB).			
KUTNO	Kutno—Lodzkie	Poland	—
Transit and resettlement center — Durchgangs- und Umsiedlungslager — spring 41—autumn 44, capacity 500 people (PWCB).			
PAJECZNO	Radomsko—Lodzkie	Poland	—
Transit and resettlement center — Durchgangs- und Umsiedlungslager — established 1941, closed 1943, capacity 1500 people (PWCB).			
POTULICE	Bydgoszcz—Bydgoskie	Poland	—
Transit and resettlement center — Durchgangs- und Umsiedlungslager — established Jan. 40, closed 1942, capacity 7000 people (PWCB).			
PRUSZKOW	Warszawa—Warszawskie	Poland	—
Transit and resettlement center — Durchgangs- und Umsiedlungslager — established 5. 8. 44, closed 17. 1. 45, capacity 50000 people (PWCB).			
PRZEMYSL — koszary	Przemysl—Rzeszowskie	Poland	—
Transit and resettlement center — Durchgangs- und Umsiedlungslager — established autumn 41, closed spring 44, capacity 5000 people (PWCB).			
PRZEMYSL ul. Mickiewicza	Przemysl—Rzeszowskie	Poland	—
Transit and resettlement center — Durchgangs- und Umsiedlungslager — established autumn 41, closed spring 44, capacity 1000 people (PWCB).			
SZCZAKOWA	Chrzanow—Krakowskie	Poland	—
Transit and resettlement center — Durchgangs- und Umsiedlungslager — established spring 42, closed Jan. 45, 2000 people (PWCB).			
TORUN	Torun—Bydgoskie	Poland	—
Transit and resettlement center — Durchgangs- und Umsiedlungslager — established 29. 5. 41, closed 18. 7. 43, 2500 people (PWCB).			
URSUS	Warszawa—Warszawskie	Poland	—
Transit and resettlement center — Durchgangs- und Umsiedlungslager — established Aug. 44, closed 17. 10. 43, 12000 people (PWCB).			
ZAKROCZYM	Warszawa—Warszawskie	Poland	—
Transit and resettlement center — Durchgangs- und Umsiedlungslager — established 11. 8. 44, closed 23. 10. 44, 800 people (PWCB).			

ZAMOSC	Zamosc—Lubelskie	Poland	—
Transit and resettlement center — Durchgangs- und Umsiedlungslager — established Nov. 42, closed autumn 43, 12000 people (PWCB).			
ZWIERZYNIEC	Zamosc—Lubelskie	Poland	—
Transit and resettlement center — Durchgangs- und Umsiedlungslager — established 1942, closed 1943, 15000 people (PWCB).			
LESZNO — LISSA	pow. Leszno	Poland	P 52/C 09
CCKdo. of Gross Rosen (BNTB; VVN; AEK).			
CWC: 300 workers, March 41—Aug. 43 (PWCB).			
HENRYKOWO	pow. Leszno	Poland	—
CWC: 500 workers, April 42—5. 2. 45 (PWCB).			
PAWLOWICE — PAWLOWITZ	pow. Leszno	Poland	P 52/C 19
CWC: 1000 workers, July 44—Jan. 45 (PWCB).			
RYDZINA — REISEN	pow. Leszno	Poland	P 52/C 19
Forced labour camp: 110 Jews, June 41—autumn 43 (PWCB).			
OSIECZNA — STORCHNEST	pow. Leszno	Poland	P 52/X 10
Forced labour camp: 300 inmates, July 41—21. 1. 45 (PWCB).			
ROBCZYSKO	pow. Leszno	Poland	P 52/C 29
CWC: 150 workers, 1941—Aug. 44 (PWCB).			
BOJYNOWO	pow. Rawicz	Poland	P 52/C 28
CWC: 400 workers, 1939—45 (PWCB).			
NADSTAWY	pow. Rawicz	Poland	—
Forced labour camp: 100 Jews, July 41—Aug. 43 (PWCB).			
LAKTA	pow. Rawicz	Poland	—
Forced labour camp: 100 Jews, Sept. 41—Aug. 43 (PWCB).			
RAWICZ — RAWITSCH	pow. Rawicz	Poland	P 52/C 37
Forced labour camps: Stammlager — Zuchthaus Rawitsch (personal file of former inmate), 3000 inmates, Sept. 39—19. 1. 45 (PWCB).			
"Columbia", 100 Jews, Apr.—29. 8. 43 (PWCB).			
KRAKOW		Poland	Q 51/Z 24
CCKdo. of Plaszow (Pol. Red Cross) working with the "Neumarkter Torfverwertung GmbH." (US Army CC Handbook).			
Prison: (BNTB).			
Forced labour camp: Krakow-Podgorze, 400 inmates, 15. 4. 42—July 44 (PWCB).			
CWC: Fort Andrea (BNTB).			

