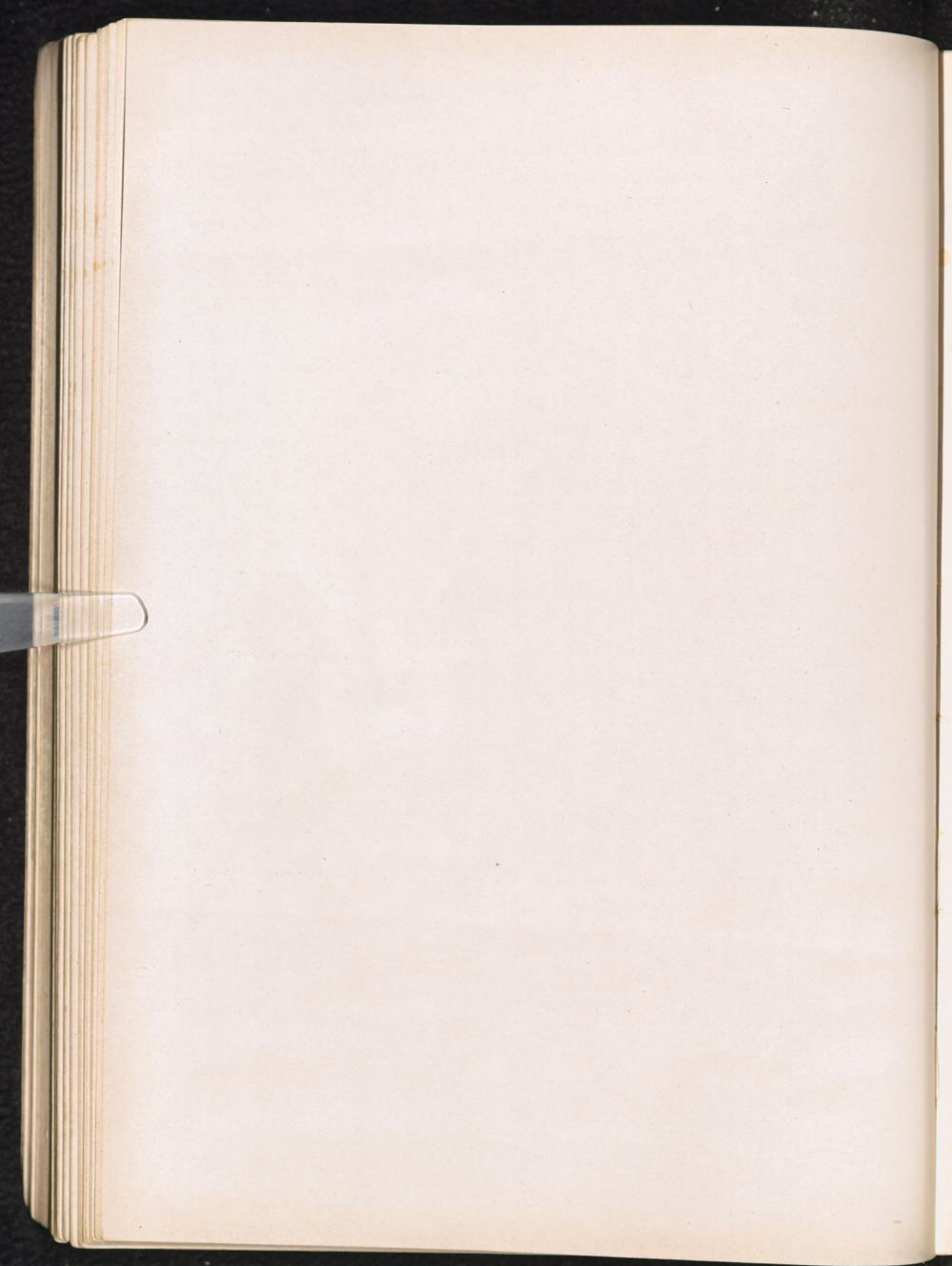


YUGOSLAVIA



ARBE/Dalmatia

Prison: (BNTB).

GOSPIC/Croatia — LIKA

CC: (Féd. des Commun. Juives in Yugosl.).

DJAKOVO/Croatia

CC: approx. 4000 people, predominantly women and children disappeared in this camp, 566 victims died in the camp. (Féd. des Commun. Juives in Yugosl.).

BANJICA

CC: in the outskirts of Belgrade, 534 death cases (Féd. des Commun. Juives in Yugosl.).

ZEMUN on the Donau  
opposite Belgrade

CC: called Sajmiste; about 8000 Jewish inmates (Féd. des Commun. Juives in Yugosl.).

SCHABATZ/Servia

CC: (Féd. des Commun. Juives in Yugosl.).

RAB/Dalmatia — Island

CC: (Féd. des Commun. Juives in Yugosl.).

NISCH "Kurschumliska — Banja" Servia

CC: Foreign Jews, some executed at Nisch, others transported to the extermination camp "Samisl" (Féd. des Commun. Juives in Yugosl.).

KRALJEVICA/Croatia

CC: (Féd. des Commun. Juives in Yugosl.).

LABORGRAD/Croatia

CC: (Féd. des Commun. Juives in Yugosl.).

JASENOVAC/Croatia

CC: Camp I and II and III, 800000 pris., 20000 Jews died in the camp (Féd. des Commun. Juives in Yugosl.).

