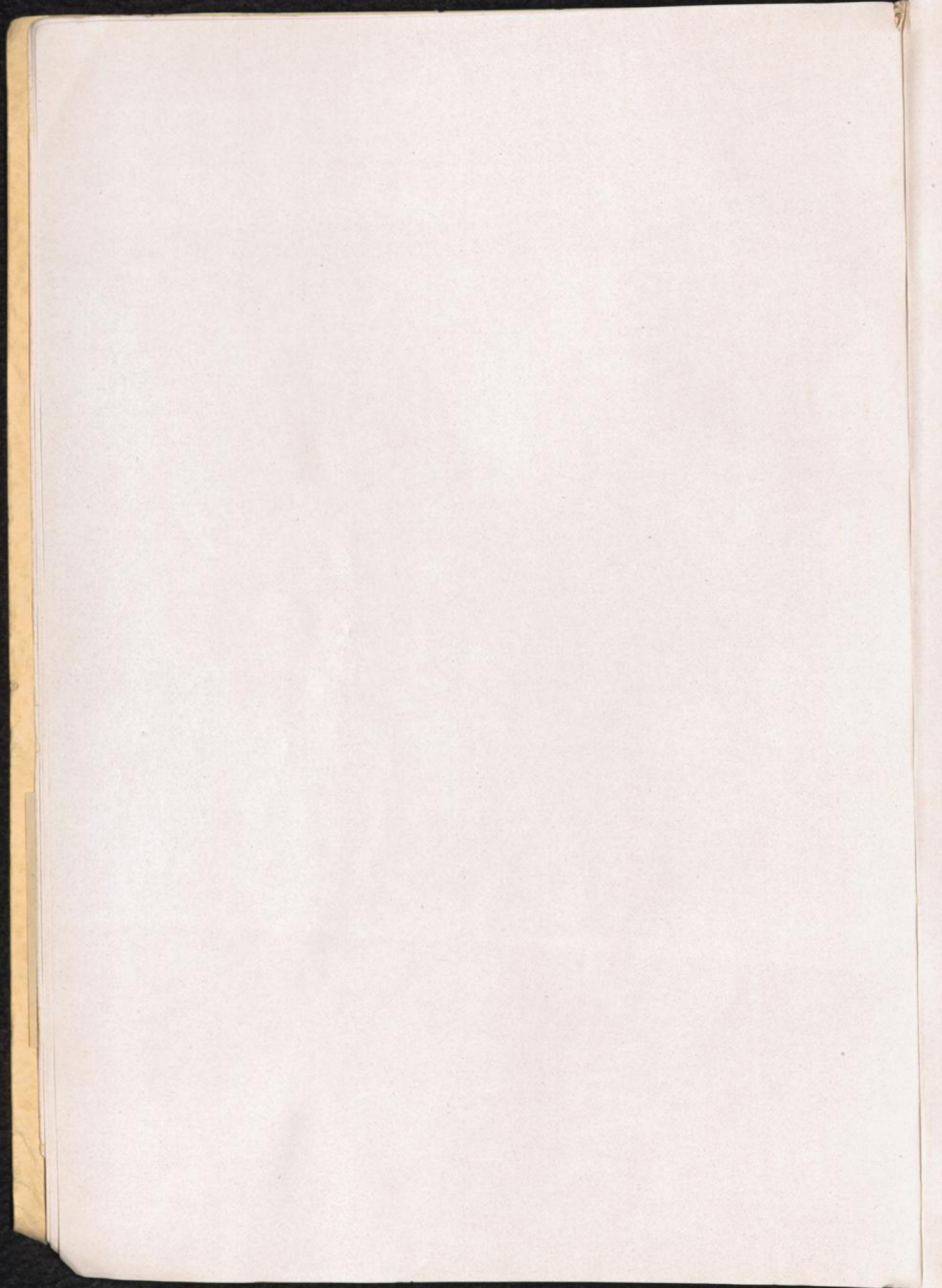


AUSTRIA



Kommando's of CC Mauthausen

Kdo. of Ma:	firm:	first mentioned:	strength last ment. on:	strength on 27. 3. 45:	
Gusen		26. 5. 40	10415	24067	
Gusen II St. Georgen	Messerschmidt AG	11. 3. 44	4. 5. 44 27. 4. 45 10893		
Gusen III — Lungitz	Bakery	16. 12. 44	14. 1. 45 27. 3. 45 304		
Peggau	Florians AG	24. 2. 41	14. 1. 45 27. 3. 45	877	
Eisenerz, Sub-Kdo. of Peggau	Alpine Montanwerke AG	6. 7. 43	5. 4. 45 closed: 300 Dec. 44		
Leibnitz, Sub-Kdo. of Peggau	Kalksteinwerke	24. 3. 44	19. 4. 45	469	
Brettstein		23. 11. 41	3. 4. 42		
Steyr-Muenichholz	Steyr-Daimler-Puch AG	14. 3. 42	14. 4. 45	1262	
St. Lambrecht	Forst- u. Guts-Verwaltung	13. 5. 42	Kdo. of Da 2. 7. 43 Ma	27. 3. 45	80
Schloss Lind, Sub-Kdo. of St. Lambrecht		22. 6. 42	Kdo. of Da later Ma	27. 3. 45	18
Wien-Schwechat	Heinkelwerke	26. 8. 42	27. 3. 45		
Wien-Afa, Sub-Kdo. of Schwechat	Afa-Werke	24. 1. 45	27. 3. 45	2729	
Wien-Jedlese, Sub-Kdo. of Schwechat			27. 3. 45		
Wien-Floridsdorf, Sub-Kdo. of Schwechat	"Julius"	15. 7. 44	11. 4. 45 in Steyr		
Maria Lanzendorf, Sub-Kdo. of Schwechat			27. 3. 45		
Wiener Graben		25. 8. 42	7. 8. 44	80	
Passau II, Salzweg	Oberilzmuehle, Elektrizitaetswerk	19. 10. 42	Kdo. of Da later Ma		
Klagenfurt	SS-Fuehrerschule	23. 10. 42	27. 3. 45	80	
Wien-Saurerwerke	Saurerwerke	4. 1. 43	27. 3. 45	1474	
Gross Raming		22. 1. 43	8. 5. 44		
Bachmanning, Sub-Kdo. of Gross Raming				5296	
Dippoldsau, Sub-Kdo. of Gross Raming					
Weyer, Sub-Kdo. of Gross Raming					
Linz I		20. 2. 43	27. 3. 45	5296	
Linz II		18. 4. 44	18. 4. 45		
Linz III-Kleinmuenchen	Herm. Goering-Werke	3. 12. 43	2812 1. 8. 44 26. 4. 45		
Ternberg-Voecklabruck		21. 2. 43	1. 6. 44	536	
Wiener-Neustadt	Rax-Werke	2. 7. 43	7. 4. 45 in Steyr-Muenichholz		
Wien-Schoenbrunn, Sub-Kdo. of Wiener-Neustadt				984	
Loiblpass I and II	Constr. roads and tunnels	19. 7. 43	27. 3. 45		
Wiener-Neudorf	Flugmotorenfabrik Wiener-Neudorf	6. 9. 43	12. 4. 45	2519	
Hirtenberg, Sub-Kdo. of Wiener-Neudorf	Patronenfabrik	28. 9. 44	27. 3. 45	398 women	

Kdo. of Ma:	firm:	first mentioned:	strength last ment. on:	strength on 27. 3. 45:
Ebensee	Solvay Kalksteinwerke	18. 11. 43	4. 5. 45	10692
Lambach, Sub-Kdo. of Ebensee			13. 4. 45	1020
Wels, Sub-Kdo. of Ebensee			2. 5. 45	
Attnang-Puchheim, Sub-Kdo. of Ebensee	Steinveredelungswerk AG	16. 11. 43	3. 5. 45	482
Schlier-Redl-Zipf		11. 1. 44	20. 4. 45	8343
Melk	Quarz GmbH.	27. 2. 44	4. 4. 45	
Graz		March 44	Nov. 44	36
Passau I, Ilzstadt	Waldwerke		300 27. 3. 45	
Passau III-Jandelsbrunn			18	May 45
Sub-Kdo. of Passau II	Bayer. Lloyd	March 45		19. 2. 45
Grein a. D.		22. 3. 44		
Mistelbach	Oilfields	March 44		
Hauskirchen, Sub-Kdo. of Mistelbach				
Siebenhirten, Sub-Kdo. of Mistelbach		March 44		
Zistersdorf, Sub-Kdo. of Mistelbach				
Amstetten			18. 4. 45	2540
St. Valentin	Nibelungenwerk, tank factory	7. 9. 44	23. 4. 45	mixed 1046
Lenzing	Zellwolle AG	30. 10. 44	27. 3. 45	567 women
St. Aegydt	Wa-SS-Motor Pool	2. 11. 44	30. 3. 45	301
Moedling		31. 3. 45	10. 4. 45	
Wien-Haidfeld, Sub-Kdo. of Moedling				
Gunskirchen		4. 4. 45	27. 4. 45	376

(Mauthausen strength report and death books).

See also MAUTHAUSEN, Volume I, page 26.

EBENSEE Krs. Gmunden US Zone N 48/V 53

Add: CC Kdo. of Mauthausen. Preparations for building the camp of the CC Kdo. Ebensee started on 18. 11. 1943, after the arrival of the first transport of 63 men, mostly professional workers, officeworkers and organizers from the CC Kdo. Redl-Zipf.

The main purpose of CC Kdo. Ebensee was to construct tunnels, to be used for armament work. The tunnels were to be constructed by CC pris. only, but under the supervision of civilian engineers employed by German constructing firms. The more important civilian firms working on this project were: Siemens-Bau-Union, Siemens-Schuckert, Grossdeutscher Schachtbau, Hinteregger & Fischer, Holzmann, Polensky, Deutsche Bergbau Hermann Goering — Nibelungen-Werk etc.

On January 17. 1944 about 500 pris. arrived in the camp, to work in the stone quarries, followed in February 1944 by another 350 pris., mostly Italians.

By June 44 the effective strength of CC Kdo. Ebensee had risen to 8000 pris.

(Statement of former inmate).

Kdo. Ebensee change of strength:

Date:	from or to:	entry:	depart:	strength:	death cases:
18. 11. 43	Kdo. Redl-Zipf	63		63	
19. 11. 43	Mauthausen	418		481	
20. 11. 43	Kdo. Wiener-Neustadt	30	1	510	
21. 11. 43	Kdo. Schlier		50	460	

p to.

Date:	from or to:	entry:	depart:	strength:	death cases:
24. 11.—17. 1. 44	Mauthausen	603	56	1007	7
19. 1.—28. 1. 44	Mauthausen	500	37	1470	2
1. 2.—17. 2. 44	Mauthausen	500	56	1914	7
18. 2.—26. 2. 44	Mauthausen	400	20	2294	8
27. 2.—4. 3. 44	Mauthausen	400	88	2606	48
4. 3. 44	Kdo. Schlier	410	410	2606	
6. 3.—24. 3. 44	Mauthausen	602	77	3130	34
25. 3.—8. 4. 44	Mauthausen	1110	56	4184	56
9. 4.—2. 5. 44	Mauthausen	615	202	4597	123
3. 5. 44	Kdo. Schlier	500		5097	
4. 5.—10. 6. 44	Mauthausen	683	893	4887	229
10. 6.—13. 6. 44	Mauthausen	580	8	5459	7
14. 6.—3. 7. 44	Mauthausen	501	202	5758	35
3. 7.—22. 7. 44	Mauthausen	155	49	5864	26
24. 7.—9. 9. 44	Mauthausen	675	168	6371	40
10. 9. 44	Mauthausen	780		7151	
11. 9. 44	Mauthausen	750	200	7701	
12. 9.—25. 10. 44	Mauthausen	788	249	8240	69
29. 10.—14. 11. 44	Mauthausen	1000	65	9175	59
16. 11.—30. 12. 44	Mauthausen	177	433	8919	341
2. 1.—22. 1. 45	Kdo. Schlier	222	260	8881	200
29. 1.—26. 2. 45	Mauthausen	1999	833	10047	749
3. 3. 45	AL Wolfsberg of Gr. Rosen	2059		12106	
9. 3.—6. 4. 45	Kdo. Wels	402	3297	9211	1884
7. 4.—13. 4. 45	Kdo. Wels	1773	210	10774	210
14. 4. 45	Kdo. Melk	2001	367	12408	367
15. 4. 45	Nordhausen	216		12624	
17. 4. 45	Kdo. Melk	1438		14062	
18. 4. 45	Kdo. Amstetten	1444		15506	
19. 4. 45	Kdo. Melk	18		15524	
19. 4. 45	Kdo. Leibnitz	407	501	15530	501
20. 4. 45	Kdo. Melk	2382		17812	
20. 4.—23. 4. 45	Kdo. St. Valentin	697		18505	
25. 4. 45			930		930
25. 4. 45	escaped at Attnang-Puchheim		11	17568	
27. 4. 45	Kdo. Gunskirchen		8	17560	
28. 4. 45			889	16671	889
30. 4.—2. 5. 45	escaped at Attnang-Puchheim		23	16648	
3. 3. 45			744	15906	744
3. 5. 45	Kdo. Schlier	142		16048	
4. 5. 45	11. Baubrigade Neuengamme	206		16254	
4. 5. 45	12. Baubrigade Neuengamme	214		16468	

(Copy of report made by League of Luxembourg Political Prisoners and Deportees).

See also EBENSEE, Volume I, page 21.

FLORIDSDORF District XXI of Wien P 49/X 49

Add: CC Sub-Kdo. of CC Mauthausen.

The camp had a strength of 2729 prisoners on 27. 3 45

(Statement E. Martin, Mauth. Schreibstube).

See also FLORIDSDORF, Volume I, page 28.

GROSS-RAMING Krs. Steyr US-Zone O 48/W 04

Add: CC Kdo. of Mauthausen.

The camp is first mentioned in March 1943 (Former inmate; War Crimes Comm.).

See also GROSS-RAMING, Volume I, page 21.

FISCHHORN/Bruck i. Pinzgau

Krs. Zell am See

US-Zone

N 48/E 86

CC Kdo. of Dachau.

First mentioned on 6. 9. 1944. approx. 150 pris. were working on construction of SS-Remonteamt Fischhorn. Last mentioned on 22. 4. 45 (Dachau Files).

