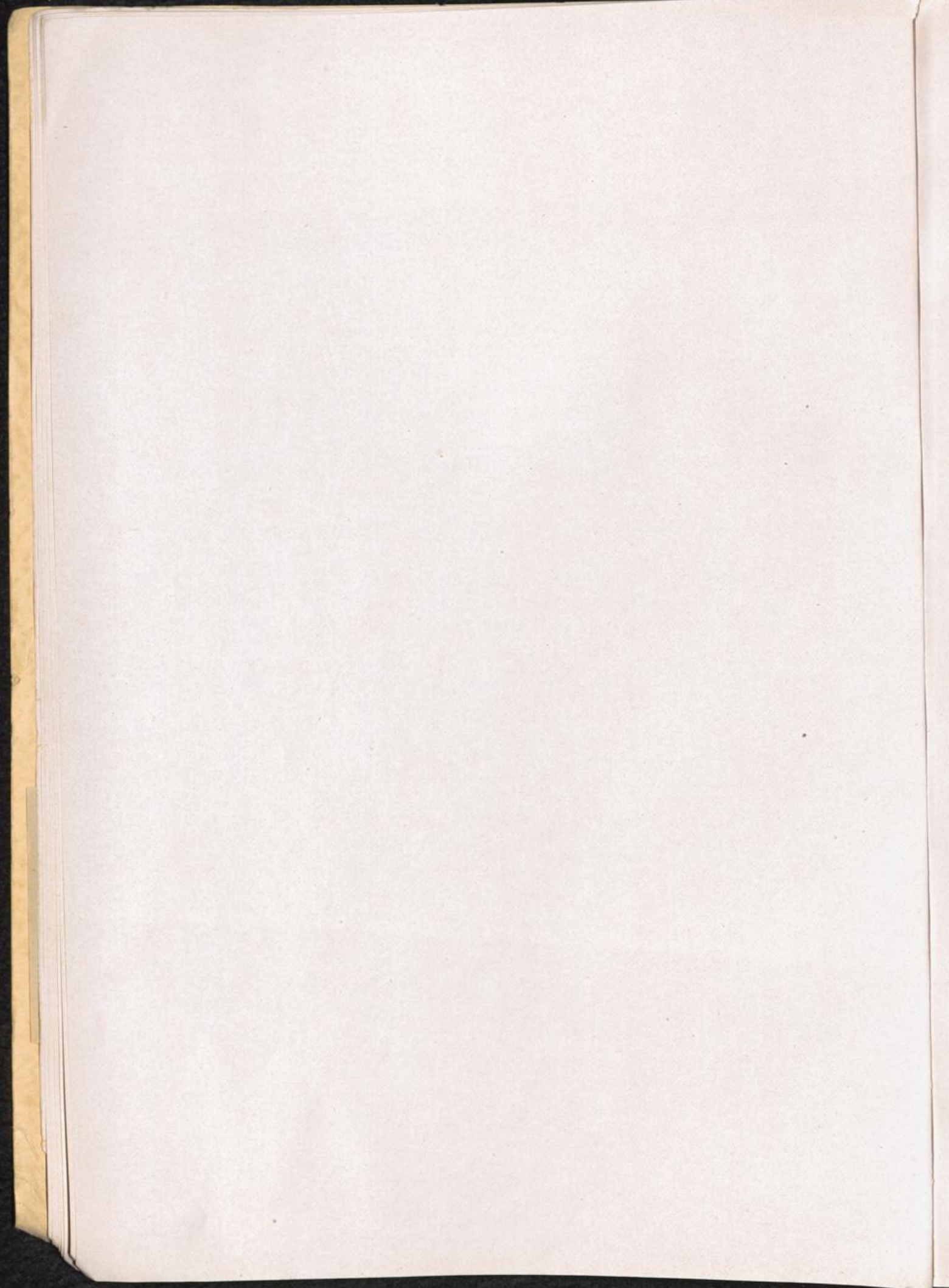


BELGIUM



BOURG LEOPOLD-BEVERLOO

3/K 28

Prison: Paragraph 5 on page 35: Bourg Leopold-Beverloo and Errata page 485 paragraph 4, Belgium page 35, are to be cancelled and replaced by the following text:

Prison: "Das Außenlager Leopoldsborg des K.W.G. St. Gilles", Detachment of the military prison St. Gilles. In 1940 the Germans detained Belgian PoW's here, some of whom were released and the remainder sent to Germany. Then Belgian political prisoners, British and US citizens were detained here, but later sent to Germany. Latin-American and Indian citizens remained here permanently. Strength: 1400—1500 pris.; at liberation, around 12.9.1944, 990 pris. (BNTB).

MALINES—MECHELEN

3/J 67

Add: Transit Camp: In 1943/44 prisoners of Malines-Mechelen were transferred to Breendonk before being sent to Auschwitz (former inmate).

See also MALINES, Volume I, page 37.

BREENDONK

2/J 67

Add: "Anhaltelager" is first mentioned in summer 1941. In June 1942 the strength was about 153. By May 1943 it had reached 480 inmates (Breendonk records).

See also BREENDONK, Volume I, page 35.

