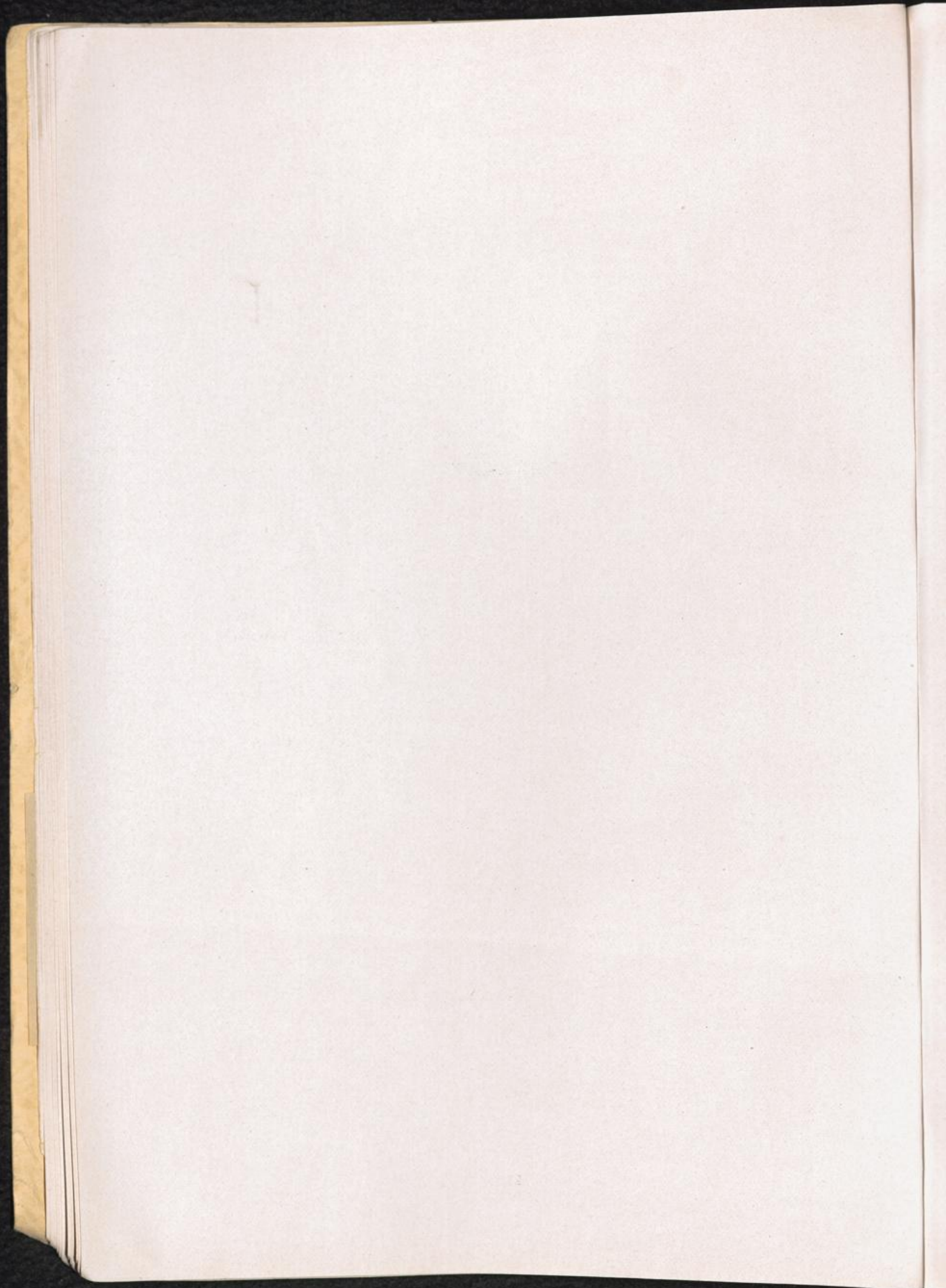


DENMARK



## HORSEROED

33/4005

3 km NW of Helsingoer, island Seeland

Add: CC HORSEROED, official name Interneringslejren I Horseroed, "Erweitertes Polizeigefangenenlager".  
From 22. 8. 1940 to 2. 8. 1941 former German emigrants were in custody here, arrested by Danish Police on German orders.

After 20. 8. 1941 the camp was used as internment camp for communists, arrested on German orders. On 25. 8. 1943 the German authorities took over the camp.

Average strength 630 persons.

On 13. 8. 1944, 741 persons were transferred to the new camp Froeslev and Horseroed was closed (Police Department report, Copenhagen).

See also HORSEROED, Volume I, page 49.

## FROESLEV

58/1899

3 km W of Padborg near German-Danish border

Add: CC FROESLEV, official name Interneringslejren I Froeslev, "Erweitertes Polizeigefangenenlager".  
Established on 13. 8. 1944 with an average strength of 1500 prisoners.

In March-April 1945 average strength 4500 prisoners; closed 5. 5. 1945, day of liberation.  
(Police Department report, Copenhagen.)

See also FROESLEV, Volume I, page 72.

## AALBORG

10/9138

Prisons: HQ Aussendienststelle: "Hoejskolehotellet", Boulevarden 27.

Danish prison "Kong Hansgades Arresthus" with a part at the disposition of the Germans.  
(Police Department report, Copenhagen.)

## AARHUS

24/9537

Prisons: HQ Aussendienststelle: College IV, University, until 31. 10. 1944, when destroyed by RAF.  
Central Police station, Aarhus (Police Department report, Copenhagen.)

## KOBENHAVEN-COPENHAGEN

Add: Prisons: Vestre Faengsel — Deutsche Abteilung, Vigerslevalle 1, Copenhagen SV.

Shellhuset—Shell House, Vestre Farimagsgade, Copenhagen V, until 21. 3. 1945, when destroyed by RAF.

Politigaarden, Hambroesgade, Copenhagen V, after 9. 9. 1944.

(Police Department report, Copenhagen.)

See also KOBENHAVEN, Volume I, page 49.

## ESBJAERG

42/7380

Prisons: HQ Aussendienststelle: "Hotel Hafnia", Skolegade 20, Esbjaerg,

"Stormgade 85", Esbjaerg, from Aug. 1944.

"Hoejskolhjemmet", Esbjaerg, from Sept. 1944.

(Police Department report, Copenhagen.)

## KOLDING

44/3771

Prison: HQ Aussendienststelle: "Staldgarden", Kolding.

(Police Department report, Copenhagen.)

## ODENSE

46/9352

Prison: HQ Aussendienststelle: "Husmandskolen", Odense, until Apr. 1945, when destroyed in RAF raid.  
(Police Department report, Copenhagen.)

Prison: HQ Nebendienststelle: Police station, Korsøer.

Each "Aussendienststelle" or "Nebenstelle" had installed some cells in its HQ. After interrogation there, the prisoners were sent to camp "Horseroed" and after 13. 8. 44 to camp "Froeslev". Some were held only for a short period, and afterwards transferred to prisons or KZ in Germany, or were executed after trial.

Danish prisons outside Copenhagen had a combined accommodation for 1620 persons, of these 220 were at the disposition of the Germans. In Copenhagen the Danish prison was forced to place 400 out of 540 cells at the disposition of the Germans. 4-5 persons were kept in custody in each cell.

(Police Department report, Copenhagen.)