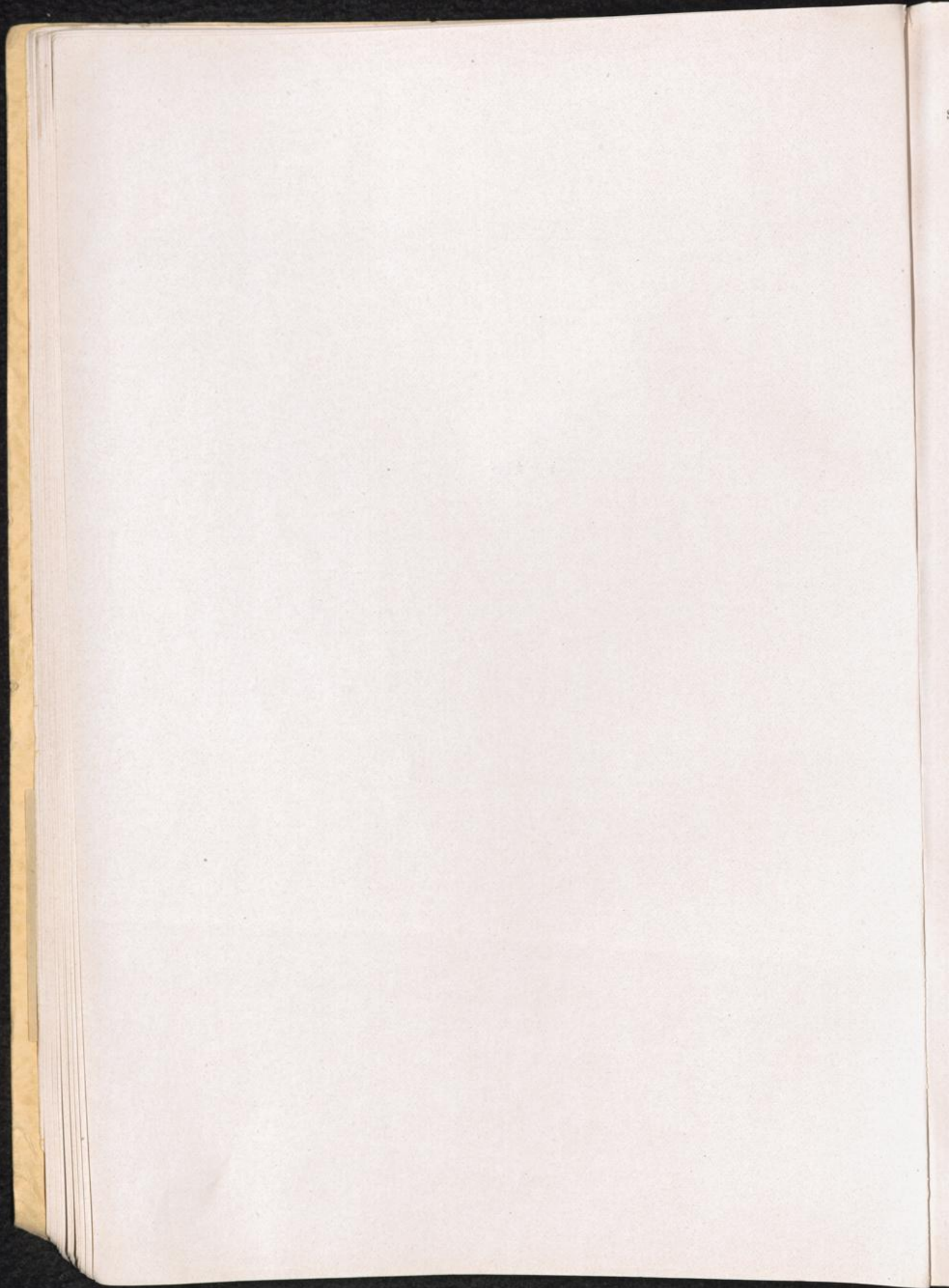


FRANCE



SAINTE MARIE aux MINES—MARKIRCH

C-K 49/V 56

Add: CC Kdo. of Natzweiler.

300 prisoners worked on the construction of a railway tunnel between Markirch and Saint-Dié in August 1944.

(French Synthese de Documentation.)

See also SAINTE MARIE AUX MINES, Volume I, page 174.

COLMAR

C-K 49/V 74

CC Kdo. of Natzweiler.

Transport of 465 Jews from Reichshof, prisoners of CC Plaszow arrived at Colmar as "Arbeitseinsatz" of the CC Natzweiler on 21. 8. 44.

(Natzweiler Trf.List.)

See also COLMAR, Volume I, page 174

