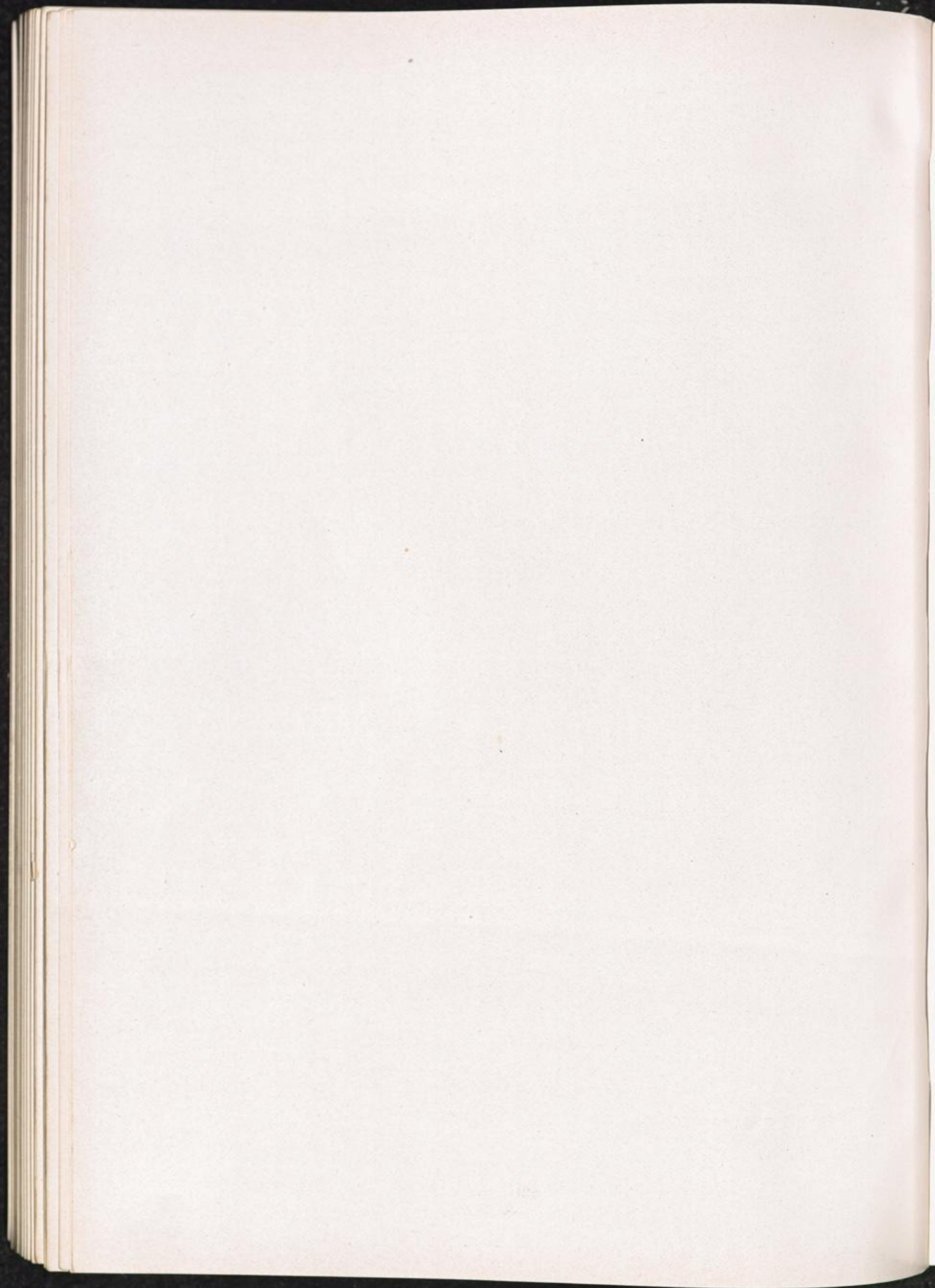


POLAND



- KRONE a. d. Brahe — KORONOWO pow. Bydgoszcz Poland P 54/S 77
 Prison: (Neusustrum records).
 See also KORONOWO, Volume I, page 316.
- GRAUDENZ — GRUDZIADZ Poland Q 54/D 53
 Add: Prison: The "Wehrmachtgefaengnis Graudenz" was housed in "Lager Voggendorf"
 (Statement of guards).
 See also GRAUDENZ, Volume I, page 318.
- WARSCHAU — WARSZAWA Poland R 53/L 09
 Add: Prison's: "Mokotow", criminal prison, Rakowitschstr.
 "Pawiak", political prison, Dzielnastr. 24/26.
 Captured members of the Polish Underground Army were kept here prior to their deportation
 to Auschwitz, Majdanek, Buchenwald etc. (Report on various tracing cases).
 See also WARSCHAU, Volume I, page 325.
- LAURAHUETTE pow. Katowice Poland Q 51/Y 51
 CC Kdo. of Auschwitz III — Monowitz. This Kdo. is mentioned on 30. 6. 44
 (Auschwitz punishment records).
 See also SIEMIANOWICE, Volume I, page 341.
- AUSCHWITZ pow. Biala, woj. Krakowskie Poland Q 51/Y 74
 CONCENTRATION CAMP AUSCHWITZ I. Work details were employed by:
 I.G. Farbenindustrie AG, Werk Auschwitz
 Fa. "Metall-Union"
 D.A.W. Hallen-Kiesgrube
 Faulgasanlage.
 A work detail of female pris. called "Kdo. Rotkaeppchen" was employed by Fa. Metall Union
 (Auschwitz punishment records).
 See also AUSCHWITZ, Volume I, page 343.
- JAWISCHOWITZ pow. Biala, woj. Krakowskie Poland Q 50/X 99
 CC Kdo. of Auschwitz. Work details were employed by
 "Grube Brzeszcze" and
 Fa. Klotz (Auschwitz punishment records).
- MONOWITZ pow. Biala, woj. Krakowskie Poland Q 51/Y 74
 Add: CC AUSCHWITZ III — Monowitz. This CC had the following work details:
 Work detail No. 9: Elektrobetrieb
 " " " 10: Transportbetrieb, IG. Baugelaende
 " " " 42: Fa. Arb.Gem. Betonstahl
 " " " 50: Niederdruckbetrieb
 " " " 52: Karbidfabrik, IG. Baugelaende
 " " " 53: Fa. Willich, IG. Baugelaende
 " " " 90: Betriebsschlosserei
 " " " 119: Technisches Lager
 " " " 131: Fa. Stoelcker
 " " " 140: Fa. Lurgi-Apparatebau
 " " " 149: Fa. Schwab
 " " " 157: Fa. Prestel
 " " " 165: Fa. Boldt, IG. Baugelaende (Auschwitz punishment records).
 See also MONOWITZ, Volume I, page 343.

TRAWNIKI pow. Lublin Poland S 52/R 36

Add: CC Kdo. of Lublin (PWCB).

FLC: Lager des SS- und Polizeifuehrers im District Lublin. First mentioned on 16. 9. 42
(Records on various concentration camps).

See also TRAWNIKI, Volume I, page 331.

DZIALDOWO — SOLDAU Poland Q 54/E 32

Add: Established as an extermination camp in winter 1939/40, transferred in a forced labour camp and later on in an "Arbeitserziehungslager" of the Regierungsbezirk Zichenau. For some time Soldau also was an "Umsiedlungslager" separated from the other camp by a high fence
(Statement of the former Inspecteur of the SD Koenigsberg).

See also DZIALDOWO, Volume I, page 319.

