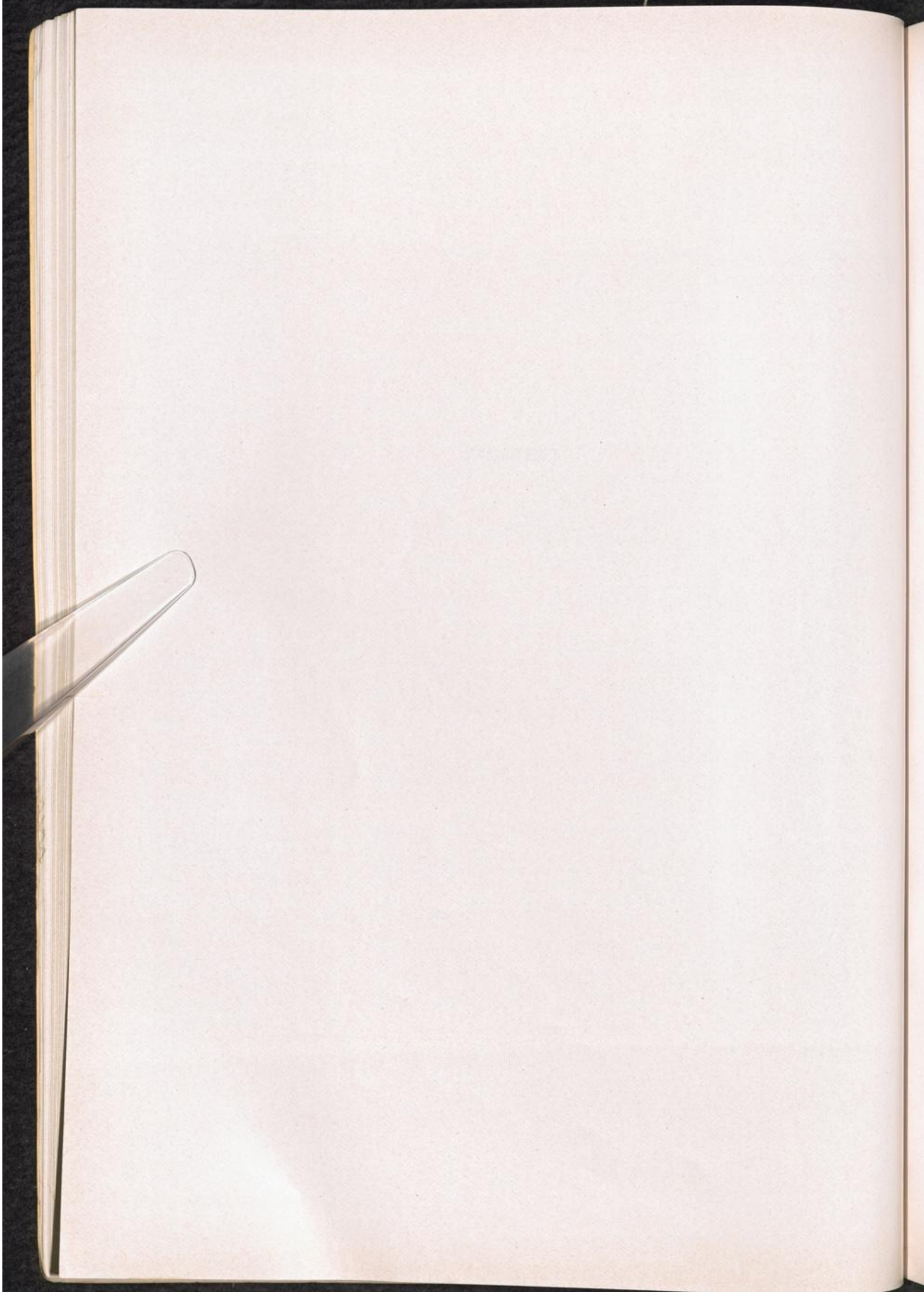


LITHUANIA



SCHAULEN—SIAULIA

S 56/M 40.

Ghetto: existing Aug. 41—July 43, when transferred into a CC.

CONCENTRATION CAMP: established July 43, average strength 400 prisoners, more than 50% women, working in different factories, closed 21 7. 44, evacuated to CC Stutthof and transferred to CC Dachau, Aug. 44 (former inmates). One former inmate gives Schaulen as CC Kdo. of Kaunas.

BATCUM

near Schaulen — Siauliai

S 56/M 40
(Schaulen)

FLC: ZAL for Jews, established 1942, closed 1944, opened only during summertime, approx. 500—1000 prisoners, of them 200—500 women. Belonged to Ghetto Schaulen (former inmates).

PONIVIEZ — PONIEWIEZ

near Schaulen — Siauliai

S 56/M 40
(Schaulen)

FLC: ZAL for Jews, mentioned in June 44, prisoners were working on an air-field. Closed end of June 44, a part of the prisoners were transferred through Schaulen to Stutthof, and from there, in Aug. 44, to Dachau (former inmates).

KAUNAS — KOWNO — KAUNEN

S 55/W 88

Add: Ghetto: established 15.8.41, 32000 men, women and children, administration: "Gebietskommissar". Existed until autumn 42, when 3 massacres reduced the population to 14000 persons, including 400 women. The Ghetto was then transformed into a:

CONCENTRATION CAMP: existing till 14. 7. 44, when the men were brought to Dachau and the women to Stutthof. CC Kaunas had work camps at Palemonas and Aleksotas. No numbering system, although provision had been made for this. Evacuated Aug. 44: women and children to Stutthof, the men to Dachau (former inmates).

See also KAUNEN, Volume I, page 295.

ALEKSOTAS - KOWNO

S 55/W 88

Ghetto: first mentioned July 42.

Work camp of CC Kaunas — Kowno, established June 43, 300—400 male and 100—150 female prisoners. Working with "Flakinstandsetzungswerkstaette" of firm Schichau in Elbing. Evacuated around 15. 7. 44 to CC Stutthof (former inmates).

ZEZMARIAI

50 km from Kowno

FLC: first mentioned in April 1942, prisoners were working on road construction and wood cutting (statement of one former inmate). Another former inmate gives Zezmariiai as a Kdo. of CC Kaunas-Kowno, strength about 450 prisoners, including 300 women.

WILNO — VILNIUS

Ghetto: mentioned 1941.

FLC: ZAL for Jews, first mentioned 1942, 600 prisoners, working with "Heereskraftfahrpark", Army-motor-pool, closed 1945 (former inmates).

PALEMONAS

20 km from Kowno

Work camp of CC Kaunas — Kowno, established 1941, strength 50 prisoners, working in a brick-yard (former inmates).

LINKAICIAI

FLC: ZAL for Jews, 180 prisoners, including 70 women, unloading ammunition for the Wehrmacht, closed March 44, evacuated via Schaulen to CC Stutthof (Statement of one former inmate, no other confirmation).

PROVENISKIAI

10 km from Kaunas

CONCENTRATION CAMP: established 1941, closed 1944, strength about 5—6000 prisoners, including 500 women, working in the woods (Statement of one former inmate, no other confirmation).

GHETTOS

KAUNAS — KOWNO — KAUEN

S 55/W 88

Ghetto: mentioned 1940—July 44 (former inmates).

VILIJAMPOLE/KOWNO

S 55/W 88
(Kowno)

Ghetto: mentioned July 44 (one former inmate).

KREWO

Ghetto: mentioned May 42 (one former inmate).

LIBAU

Ghetto: mentioned 1941—Oct. 43 (former inmates).

NIESWIEZ

Ghetto: mentioned 1942 (one former inmate).

OSCHMIANA — OSZMIANA

Ghetto: mentioned July 41—March 43 (three former inmates).

SCHAULEN — SIAULIAI

S 56/M 40

Ghetto: mentioned 1941—July 44 (former inmates).

SMORGONIE

Ghetto: mentioned July 41 — July 42 (one former inmate).

WILNO

Ghetto: mentioned end of 1941—Nov. 44 (former inmates).

ZEZMARIAI

Ghetto: mentioned Jan.—June 43 (one former inmate).