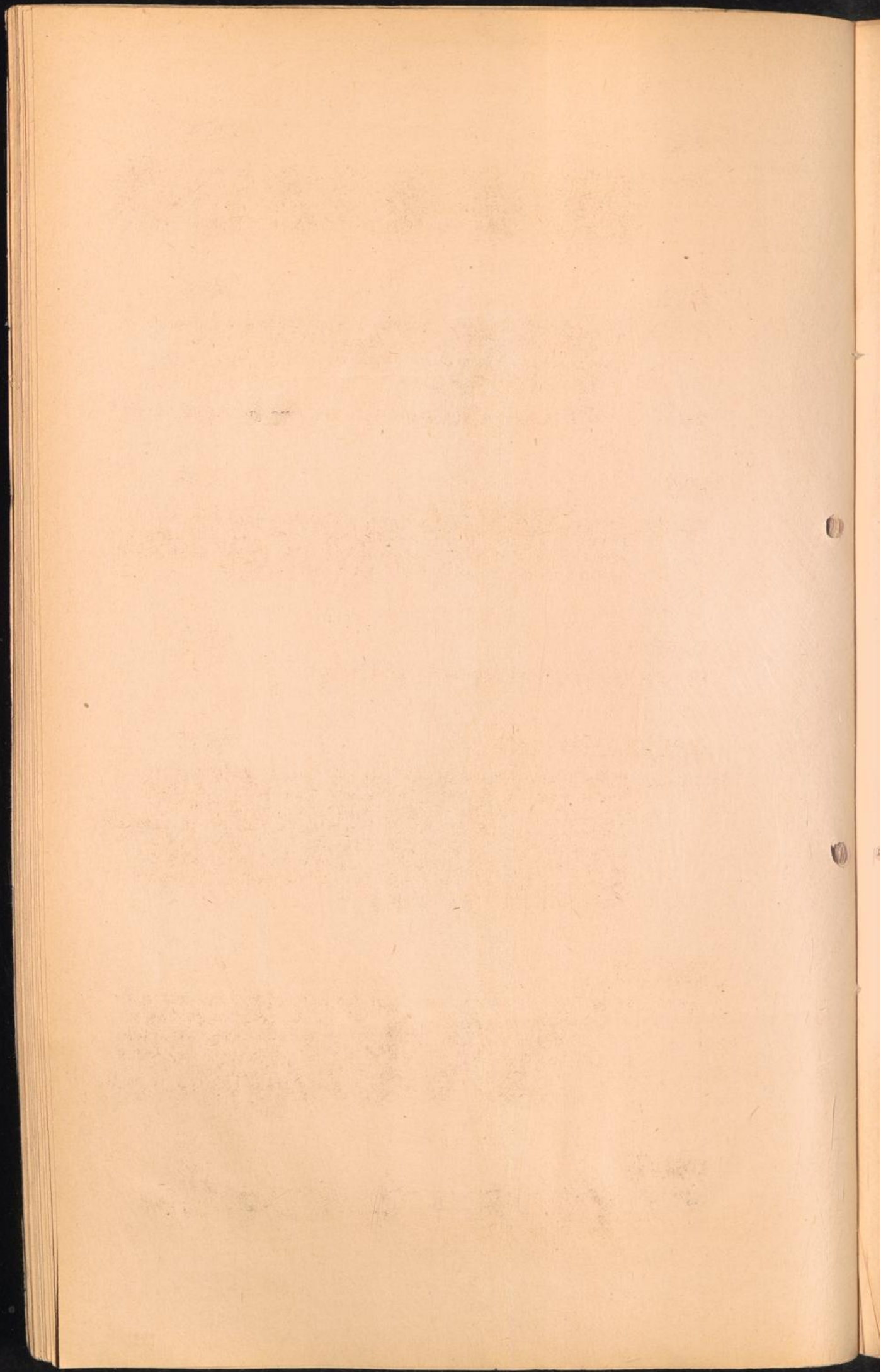


BELGIUM
.....



ALOST

2/J 46

Prison: Haftlager der Werbestelle - detention camp of the foreign workers recruiting office-. The camp had a capacity of 40 prisoners and was destined to keep work contract violators. The prisoners were regularly forwarded to Termonde. (BNTB)

ANVERS

3/J 79

Prison: a) Kriegswehrmachtsgefaengnis - Standortarrestanstalt.-
Prison of the military command.
b) Sammellager fuer Kontraktbruechige - assembling camp for contract violators.

Camp : Auffanglager - reception camp for foreign workers (BNTB)

ARLON

6/P 62

Prison: Kriegswehrmachthaftanstalt - Standortarrestanstalt.-
Prison of the military command. Held political prisoners, hostages and offenders against the military and common law. Executions of hostages took place here. (BNTB)

AUDEMARDE

2/J 05

Prison: for people serving light sentences.

BOURG LEOPOLD - BEVERLOO

3/K 28

Prison: " Das Aussenlager Leopoldsborg des K.W.G. St.Gilles "-
Detachment of the military prison St.Gilles.- In 1940, the Germans detained here Belgian POW's, some were released, the others sent to Germany. Then Belgian political prisoners were detained here together with British,US, Latin-American and Indian citizens brought here from the Reich. Strength: 1400-1500 pris. at liberation around 12.9.1944, 990 pris. (BNTB)

BREENDONCK

2/J 67

"Anhaltelager: camp of detention. The camp was placed exclusively under the jurisdiction of the Sicherheitspolizei at Bruxelles; the treatment of the prisoners was very much the same as in a concentration camp. Political prisoners, racial persecutees and members of the underground resistance movement were kept here. (BNTB)

CHARLEROI

6/J 60

Prison: Kriegswehrmachthaftanstalt - military prison, holding political prisoners, hostages and offenders against the common law. (BNTB)

BRUGES

2/C 80

- Prison: a) for people serving light sentences.
b) Haftlager der Werbestelle - detention camp of the foreign workers recruiting office.- The camp had a capacity of 50 pris. and was destined to keep work contract violators. The prisoners were regularly forwarded to G a n d.
c) Camp de St.CROIX; no Belgians were detained here during the war. (BNTB)

BRUXELLES.

3/J 65

- Prison: a) ~~Drinklean Police~~
b) Geheime Feldpolizei - Secret Field Police - Avenue Louise
c) " " " " " - Rue aux Laines
see also ETTERBEEK, FOREST, LAEKEN, St.GILLES and SCHAEFEBEEK
(BNTB)

CONTRAI

2/H 85

- Prison: a) Kriegswehrmachtgefaengnis - military prison for people serving light sentences.
b) Haftlager der Werbestelle - detention camp of the foreign workers recruiting office.- The camp had a capacity of 30 pris. and was destined to keep work contract violators. The prisoners were regularly forwarded to G a n d . (BNTB)

DINANT

6/O 98

- Prison: a) in the Convent of the " Immaculee Conception", for political prisoners, hostages, members of the underground resistance movement and other offenders.
b) Hotel de la Poste; Headquarters of the Sicherheitsdienst Dinant, with some rooms for the prisoners.
c) in the prison of Dinant; people were detained who had to serve light sentences. (BNTB.)

ETTERBEEK, suburb of Bruxelles

3/J 65

- Prison: a) "Sammellager" for contract violators and escapees from forced labour camps; the inmates of this " assembling camp " were transported to the various Arbeitserziehungslager.
b) " Abwehr " : prison of the counter-intelligence section of the German army, in the casernes of Etterbeek. After an air-raid on 3.9.43, the prison was transferred to Laeken, caserne St. Anne. (BNTB.)

EUPEN.

3/K 72

- Prison: Detachement of the prison in Aachen - Aix la Chapelle (BNTB)

FOREST

Suburb of Bruxelles

3/J 65

Prison: Kriegswehr-macht-frauen-straf-gefaengnis and Frauenzuchthaus=
a) military prison for women
b) penitentiary for women.
At the beginning of the occupation of Belgium all women with long term prison sentences were taken to the Forest military prison. On 5.7.42 those with sentences of more than 3 years were deported to Germany. On 8.9.43 all these with a term of over 9 months were also deported. Women were imprisoned for espionage, military activities, assisting allied armies, fraternizing with allied army personnel. Women parachutists were also held here. Women whose death sentence had been commuted to a prison term were sent to Germany for the duration of the sentence. Prisons in LOUVAIN and LERXPLAS were of the same categories.

GAND - GHELT

2/J 18

Prison: a) Kriegswehr-macht-gefaengnis - military prison for political prisoners and ordinary offenders.
b) Caserne St.Pierre, 8, Place St.Pierre " Anhaltelager "- camp of detention for offenders against forced Labour recruitment orders or such people who have been arrested in lieu of escapees from the conscription - Ersatzhaeftling.

Camp: Sammellager der Verbestelle, assembling camp of the foreign labour recruitment office, capacity 500 people.
(BNTB)

HASSELT

3/K 36

Prison: Kriegswehr-macht-gefaengnis for people serving light sentences.

HERSTAL

3/K 53

C.C.: Factoris M.N.Pieper of tools, under German control (BNTN)

HUY

6/K 21

Prison: referred to as Festung - Fortress, Zitadelle - Citadel, or Interniertenlager - internment camp. Held political prisoners, hostages and ordinary offenders. (BNTB.)

LAMEN

suburb of Bruxelles

3/J 65

Prison: of the "Abwehr", German counter-intelligence. Held only political prisoners (BNTB)

St. LEONARD

see L I E G E

LIEGE - LÜTTICH

3/K 42

Prison: Kriegswachthausanstalt Lüttich.
a) Abteilung St. Leonard
b) Abteilung Zitadelle (Personal files of prisoners)
One section called " Gemeinschaftshaft " - common detention
was reserved for people arrested under the charge of
labour regulation offences.

LOUVAIN - LOUEN

3/J 85

Prison: a) Central prison. All committals made by German authorities
1941 - 44
b) Secondary prison. Rue Marie Therese - was controlled by
Germans during the war. Very severe regime.
c) Prison in the barracks, Rue de Tirlemont, used for hostages
occasionally served as a transit camp for persons being
deported to Germany (BMTB)

LALINES

3/J 67

Transit camp: for Jews on their way to the Eastern CC's, in Caserne
Dossin. 31 convoys departed to Germany, the first
going to Birkenau on 4.8.42 and the last to Bergen
Belsen on 19.4.44. (Ministere de la Reconstruction, Brux.)

Prison: transit prison through which approximately 1100
prisoners went on their way through Diepenbeek to
Anvers. (BMTB.)

MALLEDY

6/K 80

Prison: a) in the "Rue devant les Religieuses":
Transit place for transports from Belgium to Germany
b) du Chatelet
c) du Globe, both prisons holding political prisoners, hostages
and other offenders who wanted to enrol into the Wehrmacht.
(BMTB)

MERXPLAS

3// 01

Prison: " Belgische Strafanstalt mit deutscher Anstaltsleitung " -
Belgian prison under German direction. For treatment and
classification of prisoners see Forest. (BMTB)

MALUR

6/J 91

Prison: Kriegswachthausgefängnis - Standortarrestanstalt -
prison of the military command, for people serving
light sentences.

NIVELLES

2/J 52

Prison: for people serving light sentences.

MONS

5/J 31

Prison : Kriegswehrmaechtsgefaengnis - Standortarrestanstalt -
Prison of the military command. Held political prisoners,
hostages and offenders against the military and common
laws. Executions of hostages took place here (DNFB).

ROULERS

2/H 77

Prison : Haftlager der Werbestelle - detention camp of the foreign
workers recruiting office. - The camp had a capacity of
50 persons and was destined to keep work contract viola-
tors. The prisoners were regularly forwarded to G a n d.

SCHAEERBEEK, suburb of Bruxelles

3/Y 65

Transit camps in :

Hotel Moderne,
Avenue Emile Zola,
Place Elisabeth 9.

Accommodating voluntary workers and forced laborers on
their way back to Germany. Group transports were organised
here. (DNFB).

ST. GILLES, suburb of Bruxelles

3/J 65

Prison : Kriegswehrmaechtsuntersuchungsgefaengnis - Standortarrest-
anstalt - remand prison of the military command. Held
political prisoners, hostages, members of the under-
ground resistance movement and ordinary offenders.

TERMONDE

2/J 47

Prison : transit points for transports to Gand and St. Gilles,
dependent from the "OFK" of Gand. Political prisoners
and ordinary offenders went through here. (DNFB)

TOURNAI

2/H 93

Prison : a) in a school on the Bd. Leopold,
b) "Haftlager"-camp of detention - dependent from the
Kriegswehrmaechtsgericht in Tournai. People arrested
in the course of raids were kept here, also ordinary
offenders and violators of work contracts. (DNFB)

TURNHOUT

3/E 00

Prison : "Belgisches Gefaengnis unter deutschen Kontrollkommando" - Belgian prison, controlled by a German command, serving the purpose of a transit point for prisoners arrested by the Germans, and of an ordinary prison (DNFB).

VERVIERS

3/K 62

Prison : under Belgian jurisdiction; between 23.7. - 30.11.41; the guards were German. Held prisoners of all categories. (DNFB)