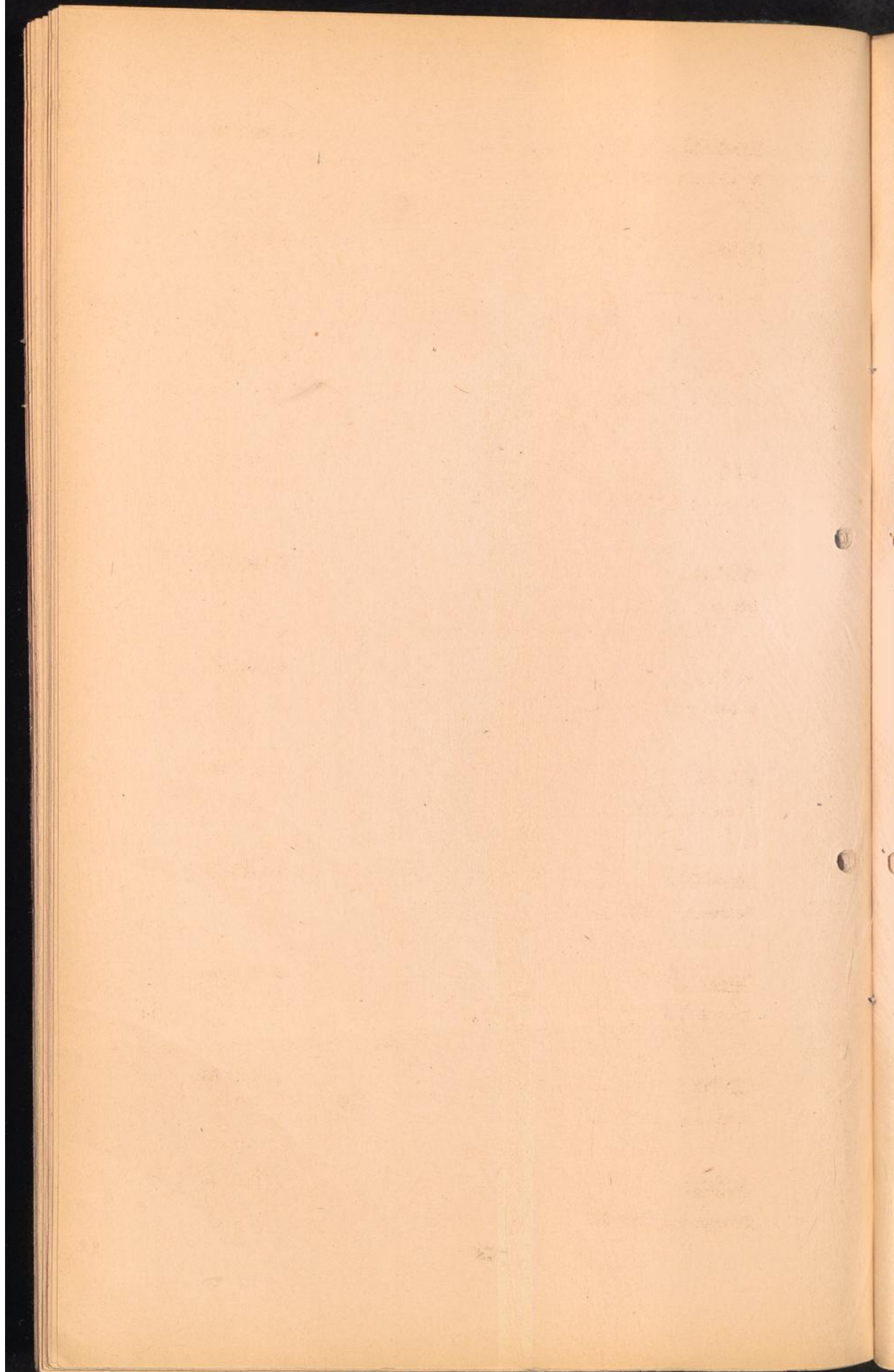


F R A N C E .
=. = . = . = . = . = . = . = . =



CHEMBOURG

A 3a/12

Prison : (BMB).

MORLAIX

A 7/R 41

Prison : (BMB).

LANNION

A 7/R 73

Prison : (BMB).

BREST

A 7a/V 99

Prison : (BMB).

QUIMPER

A 13a/W 15

Prison : (BMB).

REDON

A 13/X 60

Prison : (BMB).

POERTIVE

A 13/X 05

Prison : (BMB).

LA FLECHE

A 14/K 10

Prison : (BMB).

LAVAL

A 14/J 64

Prison : (BMB).

LOMFOUR

A 14/X 85

Prison : (BMB).

ORLEANS

A 15/F 62

Prison : (BMB).

PITHIVIERS

A 15/ 96

Transit camp : (BMTB). 648 communists and socialists (SMAEF, G-5/9,
17.4.44)

LE MAÏS

A 15/V 46

Prison : (BMTB).

NOUVEAU le ROLOU

A 15/V 89

Prison : (BMTB).

ROLOLAÏE

A 15/L 56

Prison : (BMTB).

BEAUNE la ROLAÏE/Loire

A 16/X 05

Transit camp: for Jews (BMTB), average population: 500 (SMAEF, G-5/9,
17.4.44)

NOUVEAU

A 16/X 24

Prison : (BMTB).

NOUVEAU

A 17/K 14

Prison : (BMTB).

LOUÏE

A 17/X 10

Prison : (BMTB).

VITTEL

A 17/Z 85

Internment camp: Ileg Vittel - Front Stalag 19A - was a civilian
Internment camp. Mentioned as existing transit point for
Jewish transports from France to the East in Spring 42.
(Letter American Legation), further mentioned on 5.11.43
a transfer of 25 citizens of UK, USA and other countries
from Ileg Liebenau. (Transport list.)

DIJON

A 17/O 06

Prison : (BMTB).

<u>LOUDUN</u>	A 20/P 22
Prison : (BMTB).	
<u>LES SABLES d'OLONNE</u>	A 20/S 87
Prison : (BMTB).	
<u>La ROCHE SUR - YON</u>	A 20/T 19
Prison : (BMTB)	
<u>NIORT</u>	A 20/T 35
Prison : (BMTB)	
<u>CHATELAIROUX</u>	A 21/L 50
Prison : (BMTB).	
<u>LE BLANC</u>	A 21/Q 00
Prison : (BMTB)	
<u>POITIERS</u>	A 21/U 47
Prison : (BMTB).	
<u>MONTLUCON</u>	A 22/R 14
Prison : (BMTB)	
<u>MOULINS/allier</u>	A 22/A 77
German military prison (BMTB).	
<u>LONS le SAUNIER</u>	A 23/T 49
Prison : (BMTB).	
<u>LA ROCHELLE</u>	A 24/T 33
Prison : (BMTB)	

ROCHEFORT

A 24/T 40

Prison : (BMTB).

JONZAC

A 24/Y 85

Prison : (BMTB).

LIMOGES

A 25/V 19

Prison : District penitentiary (BMTB).

ROANNE

A 26/S 31

Prison : (BMTB).

CLERMONT - FERRAND

A 26/W 58

Prison : (BMTB)

ISSOIRE

A 26/W 76

Prison :

LYON

A 27/X 98

Prison : (BMTB).

BORDEAUX

A 29/O 68

Prison : (BMTB). Fortress of E. Kriegswehrmaechtsgefaengnis Bordeaux. (personal file of former prisoner.)

LESPARRE MEDOC

A 29/J 43

Prison : (BMTB)

LIBOURNE

A 29/O 99

Prison : (BMTB)

LA REOLE

A 29/P 15

Prison : (BMTB)

ST. CYPRIEN

Δ 30/F 22

Transit camp : 13000 aliens were sent to Gurs. (BMTB , list of camp erected by the Germans in France).

PARIGNEUX

Δ 30/K 72

Prison : (BMTB)

LE PUY

Δ 31/ H 20

Prison : (BMTB)

AURILLAC

Δ 31/H 09

Prison : (BMTB).

GRENOBLE

Δ 32/J 62

Prison : (BMTB)

PRIVAS

Δ 32/N 77

Prison : (BMTB)

BAYONNE

Δ 34a/S 93

Penitentiary (BMTB).

MONT-DE-MARSAN

Δ 34/T 78

Prison : (BMTB)

VILLENEUVE / sur le Lot

Δ 35/P 63

Prison : (BMTB)

ALBI

Δ 35/Q 88

Prison : (BMTB)

MONTAUBAN

Δ 35/Q 29

Prison : (BMTB)

RODEZ

Δ 36/II 12

Prison : (BMTB)

MILLAU

Δ 36/II 60

Prison : (BMTB).

LENDE

Δ 36/II 94

Prison : (BMTB)

ALAIS

Δ 36/II 30

Prison : (BMTB)

SISTERON

Δ 37/0 81

Internment camp, with 430 black market offenders and former police and camp officials (SHLEF, G-5/9 - 17.4.44)

NIMES.

Δ 37/S67

Prison : (BMTB).

GURS / Basses Pyrenees

Δ 39/T 41

Internment camp for Jews:

On 1940 Jewish people from the universities of Heidelberg, Karlsruhe, Frankfurt/II. and Mannheim and from the Baden district, were arrested and deported to Camp Gurs. From here, transports were dispatched via Drancy to Germany, probably Silesia, in 1943. A great number of foreigners who participated in the Spanish Republican war were also kept here; " Red " Spaniards, Germans, Russians, Israelites, the majority of whom came from the camp of St.Cyprien, were sent to Germany, as foreign workers, or passed as free aliens (BMTB). Held 7.000 Jews, mostly German .
(SHLEF, G-5/9 - 17.4.44)

PAU

Δ 39/T 81

Prison : (BMTB)

CASTRES

Δ 40/Q 94

Prison : belonging to the camp of St.Sulpice (BMTB).

LIMOUX

A 40/V 98

Prison : (BMTB).

MONTPELLIER

A 41/S 24

Prison : (BMTB)

MARSEILLES

A 42/T 41

Prison : (BMTB) " Les Baumettes " district penitentiary.
Champs les milles- 400 Jews - no information
since 1942. (SEALP, G5/9 - 17.4.44)

LONGVY

B 6/ P 50

CC Kdo of Natzweiler, working for Deutsche Erzwerte AG (former inmate
of Natzweiler) mentioned 14. and 24.7.44 as
Longvy - Thil (Death certificates.)

CHARLEVILLE

B 6/O 33

Prison : (BMTB)

METZ

CC Kdo. of Natzweiler (BMTB), Erste Goeben, Haeftlingskdo. SS
Nachrichtenschule (former inmate of Natzweiler)

Prison : (BMTB)

SENLIS

B 8/S 27

Prison : (BMTB)

PELERS near Metz

CC Kdo. of Natzweiler, Haeftlingskdo. Bauleitung d. Waffen-SS und
Polizei (former inmate of Natzweiler)

BLONOUVES near Toul

B 9/U 51

Internment camp (BMTB)

COMPIEGNE

B 5/N 40

Camp of selection, for political and racial deportees until the camp of Drancy came in 1942 under German command. (BMTB, French MTB); with up to 6,000 political prisoners and American civilians; women and children from Jersey and Guernsey were here until April, 1944. (SHWAF, G-5/(- 17.4.44).

DOULLENS

B 5/N 18

Prison : (BMTB)

Transit camp for Frenchmen transferred to Organisation Todt.

LACH:

B 5/O 01

Prison : (BMTB)

RETHEL

B 5/O 50

Prison : (BMTB)

REIMS

B 8/P 37

Prison : (BMTB)

MELUN

B 8/S 27

Prison : (BMTB)

PROVINS

B 8/S 70

Prison : (BMTB)

SAMER

Work detail of Strafgefängenenlager Papenburg: see "X", Subkdos. of Papenburg.

WITTEN

B 1/G 63

Work detail of Strafgefängenenlager Papenburg: see "X" Kdos. of Papenburg.

Forced Labour Camp of the G. I. (BMTB)

DANNES-CAMIER

B 1/G 63

Camps for Israelites.

Forced labour camp:

work on "Atlantikwall" with work details : (BNTB)

Sangatte Fort Mahon
Calais Boulogne
Etaples Merlimont.

SANGATTE

B 1/G 77

~~CWC~~
E4G

CWC: work detail of Dannes-Camiers (BNTB)

CALAIS

B 1/G 87

Prison : Work detail of Strafgefängenenlager Papenburg, see "X", of Kdo. Papenburg.

CWC's: Lager Mark of the OT. (BNTB)
work detail of Dannes-Camiers.

FORT MAHON

B 1/G 61

CWC: work detail of Dannes-Camiers (BNTB)

BOULOGNE

B 1/G 65

CWC: work detail of Dannes-Camiers. (BNTB)

ETAPLES

B 1/G 63

CWC: work detail of Dannes-Camiers. (BNTB)

MERLIMONT

B 1/G 62

CWC: work detail of Dannes-Camiers. (BNTB)

ARRAS

B 2/H 40

Prison : (BNTB) work detail of Strafgefängenenlager Papenburg, see "X", Kdo. of Papenburg.

LILLE

B 2/H 63

Prison : (BNTB)

Kriegswehrrnachtsgefaengnis Lille-Loos mentioned on 12.11.43
(File of former prisoner.)

LE HAVRE

B 4/L 42

Prison : (BMTB)

PONT AUDEMER

B 4/L 70

Prison : (BMTB)

OUEN

B 4/M 21

Prison: (BMTB)

PONTOISE

B 7/R 86

Prison : (BMTB)

RAMBOUILLET

B 7/R 62

Prison : (BMTB)

LISIEUX

B 7/ Q 58

Prison : (BMTB)

MORTAGNE

B 7/Q 61

Prison : (BMTB)

LOUVIERS.

B 7/R 28

Prison : (BMTB)

MANTES-CASSICOURT

B 7/R 66

Prison : (BMTB)

POISSY

B 7/R 85

Prison : (BMTB)

PERPIGMAN

E.-S. 0872-4040

Prison : (BMTB)

PARIS

B 7/S 04

Prisons : (BNTB)

Prison : " Kriegswehrmachtsgefaengnis Paris " (Personal files of pris.)
Fresnes: Political prison for the Gestapo. More women
than men . 2-7-44 (personal files of prisoners.)
Cherche-Midi: Military Prison.
La Sante : Convict Prison.
La Petite Roquette : prison.

DRANCY near Paris

B 7/S 14

Transit camp for Israelites (French NTB)

LE VERNET

A 31/H 00

Assembling camp - middle France, camp for aliens: Spaniards,
Germans, Russians and stateless persons. (BNTB)
1000 - 1500 political prisoners. (SHAEF, G-5/9-17.4.44.)

ROMAINVILLE Fort of Paris.

B 7/S 04

Prison : executions took place when the eastbound convoy left in
the direction of Ravensbrueck (French NTB. and BNTB.)

NICE:

B 14(V) S 57

Prison : German military prison (BNTB) .

MONTBELLIARD

~~G~~ - K 48/P 38

Prison : (BNTB.)

FORT de MONTROUÇÉ
situated SW of Paris

B 7/S 04

Prison : Kriegswehrmachtsgefaengnis 1942 - 44
Executions took place in 1943 and early 1944 as reprisals
when murders have been committed against the Wehrmacht.
The prisoners were shot by a regular firing squad, generally
German soldiers sometimes by French " Garde mobile " -
national guards. (former members of French Mission.)

PIHEN

Work detail of Strafgefängenenlager Papenburg, see "X" Subkdo. of
Papenburg.

BERCK PLACE

B1/G61

Work detail of Strafgefängenenlager Papenburg, see "X", Kdo. of Papenburg.

CAMBRÉI

B5/N78

Work detail of Strafgefängenenlager Papenburg, see "X" Kdo. of Papenburg.

SALLEUX

B5/N05

Work detail of Strafgefängenenlager Papenburg, see "X", Subkdo. of Papenburg.

NEXON

A 25/V 17

Internment camp, foreign Jews, 100 releve defaulters. (SMEEF-G-5/9 - 17.4.44).

VALS-les-BAINS

A 32/N 66

Internment camp, political internees. (SMEEF G-5/9 - 17.4.44)

NATZWEILER

K 49/V 68

Struthof is a part of the village Natzweiler (Wohnplaeetze d.DR.)

Concentration Camp Natzweiler or Struthof.

First mentioned on 26.7.41 as the " newly established CC. Natzweiler of grade - Lagerstufe - II ", the address is "Kl. Natzweiler, Post Rothau i. Elsass, Tel. 49, Amt Schirmeck -Elsass." (Photocopies of Gestapo Files, Duesseldorf). This camp provided with slave labour Southwestern Germany including Alsace-Lorraine, Baden and Wuerttemberg except the parts adjacent to the Lake of Constance/Bodensee, and Southern Hessen up to Frankfurt/Main.

In Summer 1944, the evacuation of the camp was begun (French MIB.) and the move was completed on 22/23.11.44 when the administration moved to Binau/Neckar.

Here, on 24.1.45, the serial numbers of prisoners reached 44 600 (Natzweiler No. Book.)

In April 1945, all the prisoners of this CC were transferred to Dechau or its subsidiaries.

Kdo's of CC Metzweiler-Struthof were :

BADEN - OOS
BAD - PAPPENAU
BISINGEN
CALW
COCHIM/Mosel-DRUTTING-LEIS
DAUDENHEIM near BSBACH, Mrs. Mosbach, Baden.
DAUTENHEIM D-Stelle-lueste
DOLETTINGEN
ECHTERDINGEN - DEINHAUSEN
ELMANGEN
LEZINGEN
FROBEN
GUTENHEIM
GELSINGEN / Steige
HASLACH (Vulkan)
HEPPENHEIM
HESSENTHAL nr. SCHWAB, HALL
IEFFENHEIM - SANDMEIER
KOCHERDOEF - FRIEDRICHSHALL
LEONBERG
LONGWY , Alsace
LETZ, Feste Goeben
MANNIRCH = COL DE ST. MARIE
NECKARBSCHOFHEIM
NECKARELZ
NECKARGARTACH
NECKARBRACH
OBERHEIMHEIM - OBERHAI
PELTRE near LEYZ
SANDHOFEN b. LANDELHEIM
SCHOMBURG
SCHORZINGEN
SUDHEIM - GENNY
SPAICHINGEN
TALFINGEN (Hailfingen)
UNTERHEIMINGEN- GROSSACHSHEIM
UNTERSCHWARZACH - UNTERSCHWARZACHERHOF
Hospital of the Fa. Goldfish - Obrigheim
VALLINGEN - Wiesengrund/Insingen
WASSERLUTINGEN (Wiesendorf)
WESSELING
WESSTE

