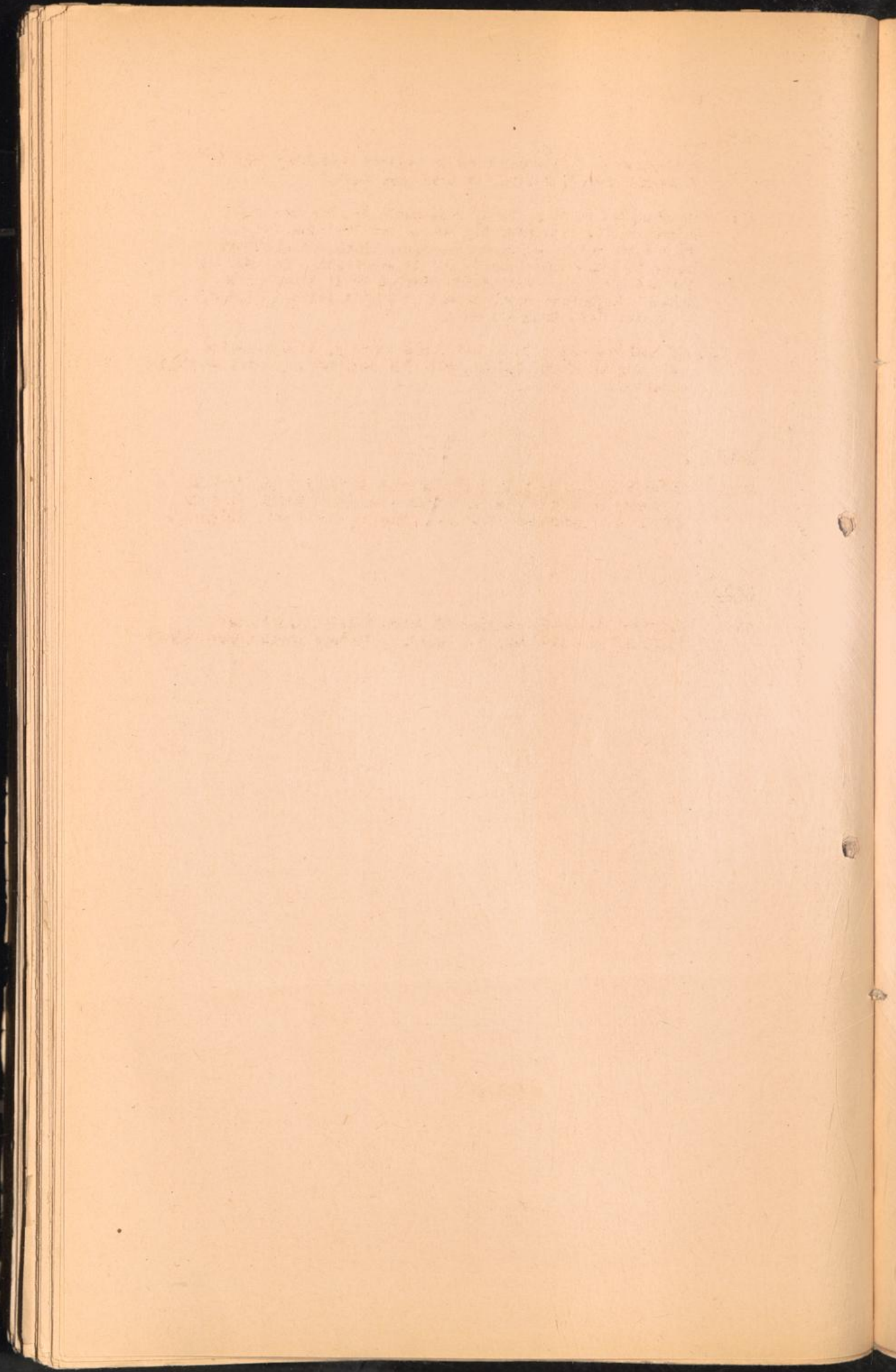


L A T V I A .
= . = . = . = . = . = . = . = . = . =



RIWA

a transport of Jews deported by Gestapo Muernberg went to " Jungfernhof ", 29.11.41 (transport list.)

CC: established 15.3.43, Riga, Weidendam 31. (Gestapo files Duesseldorf). Predominantly German and Austrian Jews; 1943 there was a children raid after which all children under 10 years were transferred to Auschwitz. In 1944 the prisoners were either transferred to Stutthof or to Libau (former prisoners report), last mentioned 22.6.44 (Invoice for a book shipment).

CC Kdo. of Sachsenhausen, first mentioned 24.3.43, with 47 pris. last mentioned on 27.5.43, with 300 prisoners (daily strength reports).

VAIVARA

CC: Established on 15.9.43 (letter RSHA 2.10.43) On 17.12.43 a change in address is announced - Feldpost 58969. (Letter RSHA) Last mentioned 28.6.44 (Invoice for a book shipment)

KAUEN

CC: Original documents mention CC Kauen between 5.6.43 and 25.7.44, when the camp was closed (Gestapo Duesseldorf files)

