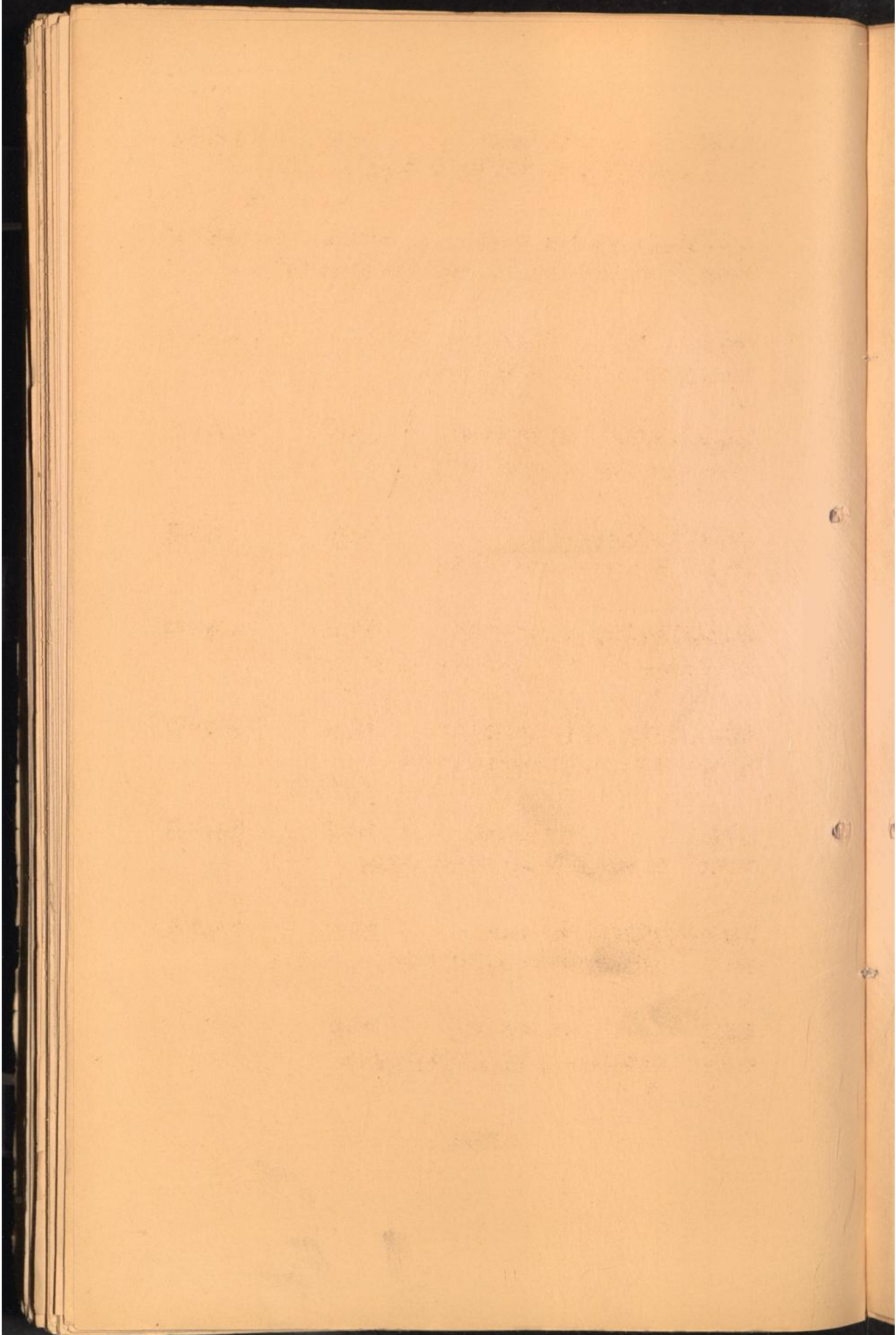


POLAND



ZAGACIE pow. Konskie Poland Q 52/U 35
 Forced labour camp of 300 Jews, June 42 - July 43 (PWCB).

SCHIERATZ - Sieradz pow. Sieradz Poland Q 52/O 42
 Prison : Strafanstalt Schieretz (file of former inmates).

LYCK former Kr. Lyck, Germany, now Poland S 54/A 86
 Prison : Landgerichtsgefängnis (BMTB).

ZBASZYN - Bentschen woj. Poznańskie Poland O 53/W 53
 Ghetto, 1941 - 44, 100 inmates (PWCB).

MIĘDZYCHOD - Birnbaum Poland O 53/W 57
 CWC : 1941 - 44, 150 pers. (PWCB).

MARIANOWO EGGLINIEC pow. Międzychod Poland O 53/W 69
 Forced labour camp : 100 inmates, Jan.-Oct. 42 (PWCB).

ZODYN - Deutsch Zedien pow. Wolsztyn Poland O 53/W 62
 Ghetto : 1942 - 43, 300 inmates (PWCB).

KARNA pow. Wolsztyn Poland O 53/W 62
 Ghetto : 120 inmates, 28.3. - 30.9.42 (PWCB).

BOBROWIK - Bebrunke Nowy Tomysl Poland O 53/W 64
 CWC : 3500 pers., 1940 - Aug. 43 (PWCB).

WASOWO pow. Nowy Tomysl Poland -
 Ghetto : 200 inmates, end 1941 - May 42 ((PWCB).

<u>BOLEWICE</u>	pow. Nowy Tomysl	Poland	-
Ghetto :	800 inmates, spring -- autumn 44 (FWCB).		
<u>TURKOWO</u>	pow. Nowy Tomysl	Poland	P 53/W 95
CWC :	Apr. 41 - March 42, 400 pers. (FWCB).		
<u>CIESLE OTUSZ</u>	pow. Nowy Tomysl	Poland	--
CWC :	June 41 - Apr. 43, 500 pers. (FWCB).		
<u>WRONKEN - Wronki</u>	pow. Nowy Tomysl	Poland	P 53/W 88
Prison :	Strafgefängnis (personal file of former inmate).		
<u>OBORNIKI</u>	pow. Oborniki	Poland	P 53/X 18
CWC :	May 40 - Febr. 43, 300 pris., (FWCB).		
<u>KRZYZOWNIKI</u>	pow. Poznan	Poland	P 53/X 16
Forced labour camp :	1000 Jews, summer 40 - autumn 43 (FWCB).		
<u>STRZESZYN</u>	pow. Poznan	Poland	P 53/X 16
Forced labour camp :	500 Jews, autumn 42 - beginning 44 (FWCB).		
<u>SWAFZEDZ</u>	pow. Poznan	Poland	P 53/X 36
Forced labour camp :	1200 Jews, 1941 - 43 (FWCB).		
<u>KOBYLNICA</u>	pow. Poznan	Poland	P 53/X 36
Forced labour camp :	370 Jews, Apr. 42 - Aug. 43 (FWCB).		
<u>KRZESLICE</u>	pow. Poznan	Poland	--
CWC :	of 400 pers., autumn 42 - Jan. 45 (FWCB).		

POSEN - Poznan

Poland

P 53/X 26

Arbeitserziehungslager of the Gestapo, offices in Hollwitzerweg 10 (personal file of former inmate).

Prison : Untersuchungshaftanstalt (BNWB) -

Stammlager : (personal file of former inmate).

Forced labour camp : Debiec, 1200 Jews, spring 42 - autumn 43,
Stadion Miejski, 1000 Jews, 1942 - beginning 43,
Fort VII, 1000 pris., Nov. 39 - 43 (PWCB).

CWC : (Netherlands NTB).

WRONCZYN

pow. Poznan

Poland

P 53/X 03

Ghetto : 100 inmates, 7.9.41 - Nov. 44 (PWCB).

PIOTROWO - Krzesiny pow. Poznan

Poland

P 53/X 13

Forced labour camp : 5000 Jews, 1941 - end 43 (PWCB).

Z/BIKOWO

pow. Poznan

Poland

P 53/X 25

Forced labour camp : 2000 inmates, beginning 43 - 21.1.45 (PWCB).

ZABINKO

pow. Srem

Poland

P 53/X 23

Forced labour camp : of 160 pers., end 42 - end 43 (PWCB).

JASLEN

pow. Koscián

Poland

P 53/X 12

CWC : Aug. 44 - 20.1.45, 400 pers. (PWCB).

OZEMPIN

pow. Koscián

Poland

P 53/X 13

CWC : July 44 - 21.1.45, 800 pers. (PWCB).

BIECZYNY

pow. Koscián

Poland

P 53/X 13

CWC : Aug. 44 - 20.1.45, 200 pers. (PWCB).

SROCKO WIELKIE pow. Koscian Poland P 53/X 13

CWC : 4.8.44 - 20.1.45, 400 pers. doing trench work (PWCB).

PIECHANIN pow. Koscian Poland P 53/X 13

CWC : Aug. 44 - 20.1.45, trench work, 350 pers. (PWCB).

PIOTRKOWICE pow. Koscian Poland P 53/X 13

CWC : Aug. 44 - 20.1.45, trench work, 750 pers. (PWCB).

NEKLA pow. Sreda Poland P 53/X 56

CWC : April. 41 - Sept. 44, 1500 pers. (PWCB).

WRZESNIA pow. Wrzesnia Poland P 53/X 65

CWC : beginning - end 1943, 500 pers., (PWCB).

OTOCZNA pow. Wrzesnia Poland P 53/X 76

CWC : July 42 - Nov. 43, 900 pers. (PWCB).

GNIEZNO - Gnosen Poland P 53/X 68

Prison : (BMTB), Landgerichtsgefaengnis (WVN).

"Durchgangs- and Umsiedlungslager" - Transit and Resettlement Center,
Oct. 39 - Apr. 40, 1500 pers. (PWCB).

MIROZYN pow. Znin Poland P 53/S 72

Ghetto : Nov. 41 - July 42, 110 inmates (PWCB).

JANIKOWO pow. Inowroclaw Poland P 53/J 04

Forced Labour camp : 300 Jews, ... 40 - March 44 (PWCB).

KRUSZWICA - Gruschwitz pow. Inowroclaw Poland P 53/J 14

CC Kdo. of Gross Rosen (PWCB), women, working for the "Textil-
werke IG." (US Army C Handbook).

CWC : 3.11.42 - 27.4.43, 120 Jews (PWCB).

HOHENSALZA - Inowraclaw

Poland

P 53/J 15

- (a) Forced labour camp of 130 Jews, 1941 - 42,
- (b) Forced labour camp of 300 Jews, 1941 - 43,
- (c) "Durchgangs- und Umsiedlungslager" - Transit and Transfer camp, 1000 pers., 1940 - 19.1.45 (PWCB).

CZARKOW

pow. Konin

Poland

P 53/O 19

Forced labour camp of 1100 Jews, winter 42 - Nov. 44 (PWCB).

GOSL/VICE

pow. Konin

Poland

P 53/O 19

Forced labour camp of 7000 Jews, March 44 - 20.1.45 (PWCB).

HL/STECZKO KR/INSKIE

pow. Wyrzysk

Poland

P 54/S 13

CWC : 1000 pers., Nov. 44 - 20.1.45 (PWCB).

BRZOSTOWO

pow. Wyrzysk

Poland

P 54/S 13

CWC : 400 pers., Oct. 44 - Jan. 45 (PWCB).

BIALOSLWIE

pow. Wyrzysk

Poland

P 54/S 24

Forced labour camp with 120 inmates, 15.4. - 15.11.42 (PWCB).

GR/BOYNO

pow. Wyrzysk

Poland

P 54/S 24

CWC : of 660 pers., Oct. 44 - Jan. 45 (PWCB).

KOBYLARNIA

pow. Szubin

Poland

P 54/S 83

CWC : of 1500 pers., autumn 1944 - Jan. 45 (PWCB).

KORONOWO

pow. Bydgoszcz

Poland

P 54/S 77

Forced labour camp : of 1200 inmates, 1942 - 26.1.45 (PWCB).

FORDON

Poland

P 54/J 19

Prison : Sicherungsanstalt, Albert Forsterplatz (BMTB),
Prison for women (BMTB).

POTULICE pow. Bydgoszcz Poland --
Forced labour camp : 7000 pers., Jan. 40 - 20.1.45 (FWCB)
"Durchgangs- und Umsiedlungslager" - Transit and Transfer camp,
Jan. 40 - 42 (FWCB).

BROMBERG - Bydgoszcz Poland P 54/J 09
CC Kdo. of Stutthof (BMTB).
Prisons : Grosse Bergstrasse 8,
Untersuchungsgefängnis, Grosse Bergstrasse 40 (BMTB).
CWC's : (Netherlands NTB).
Mühlthal (BMTB).

CHOJNICE - Konitz Poland P 54/N 41
Prison : (BMTB).

BRUSY - Bruss pow. Chojnice Poland P 54/N 53
CC Kdo. of Stutthof, 8 pris., Aug. 44 - March 45
Forced labour camp : 400 persons, end 42 - March 45 (FWCB)

GUTOWIEC - Guttowitz pow. Chojnice Poland P 54/N 62
Prison : with Polish and Jewish inmates (BMTB).

GARCZYN - Gartschin pow. Kosciierzyna Poland P 55/D 19
CC Kdo. of Stutthof, 400 pris., Sept. 39 - 45 (FWCB).

LIPUSZ - Lippusch pow. Kosciierzyna Poland P 55/N 55
Forced labour camp : 400 inmates, 1943 - 45 (FWCB).

ZDROJE - Sdrein pow. Kosciierzyna Poland P 55/N 55
Forced labour camp : 2000 Jews, 1942 - 43 (FWCB).

DZIMIANY - Dzimianen pow. Koscielna Poland P 55/N 54
CC Kdo. of Stutthof, 650 pris., Sept. 43 - March 45 (PWCB).

KOKOSZKI - Kokoschken pow. Gdansk Poland Q 55/Y 32
CC Kdo. of Stutthof, 1944 - 45, 1500 pris. (PWCB).

GDYNIA - Gdingen, Gotenhafen Poland Q 55/Y 44
CC Kdo. of Stutthof, 1944 - 45, 600 pris. (PWCB).
CWC : Deutsche Werke Kiel in Nussdorf (BMTB).

NOWE - Neuenburg pow. Swiecie Poland Q 54/D 44
Forced labour camp : 100 inmates, Dec. 43 - March 44 (PWCB).

STAROGROD - Pr. Stargard Poland Q 54/ D 38
CC Kdo. of Stutthof (Polish Red Cross).

STARY FOLWARK - Althausen pow. Grudziask Poland Q 54/D 21
CWC : 800 pers., 1.7.44 - 10.1.45 (PWCB).

SCHWETZ - Swiecie Poland Q 54/D 32
Prison : (BMTB).

LUBECZ pow. Torun Poland Q 54/J 57
CWC : 9000 workers, earth work, Aug. 44 - 5.1.45 (PWCB).

ROGOWO - Rogau pow. Torun Poland Q 54/J 48
CWC : 1000 workers, earth work, Aug. 44 - Jan. 45 (PWCB).

LIPNICKI - Lindenhof pow. Torun Poland Q 54/J 48
CWC : 5000 workers, earth work, Aug. - Oct. 44 (PWCB).

GREBOCIN - Gramtschen pow. Torun Poland Q 54/J 48

CWC : 3000 workers, earth work, Aug. 44 - Jan. 45 (PWCB).

CHOR/BIE - Kiobis pow. Torun Poland Q 54/J 58

situated $\frac{1}{2}$ mile W of Mierzynok

CC Kdo. of Stutthof, 1700 pris., 1944 - 19.1.45 (PWCB).

SZEROKOPIS - Scherokopas pow. Torun Poland Q 54/D 40

situated 1 mile SW of Bocion

CC Kdo. of Stutthof, 1700 pris., Aug. 44 - Jan. 45 (PWCB).

BOCION - Bötttschön pow. Torun Poland Q 54/D 40

situated 1 mile NE of Szerokopas

CC Kdo. of Stutthof, 1600 pris., Aug. 44 - Jan. 45 (PWCB).

ROGOWKO pow. Torun Poland -

CWC : 1500 workers, earth work, Aug. 44 - Jan. 45 (PWCB).

GRODNO pow. Torun Poland -

CC Kdo. of Stutthof, 1500 pris., 1944 - 15.1.45 (PWCB).

M/LA NIESZAWSKI pow. Torun Poland -

CWC : 3000 workers, earth work, 1944 - Jan. 45 (PWCB).

JEDWA/BNO pow. Torun Poland -

CWC : 1000 workers, earth work, Aug. - Dec. 44 (PWCB).

LISEWO - Lissowo pow. brzezno Poland Q 54/D 40

CWC : 1500 workers, earth work, Aug. 44 - 20.1.45 (PWCB).

SZYCHOWO - Heynoredo pow. Webrzeczno Poland Q 54/J 59
CWC : 150 persons (PWCB).

ELGISZEWO - Elgischowo pow. Webrzeczno Poland Q 54/J 68
CWC : 1500 workers, earthwork, Sept. 44 - 45 (PWCB).

GR/UDENZ - Grudziadz Poland Q 54/D 53
Prisons : Jugendgefängnis, Amtstr. 13/17 (BMEB)
Wehrmachtstrafanstalt (BMEB).

M/LKI - Malko pow. Brodnica Poland Q 54/D 80
situated 3 miles NE of Cieszyń.

CC Kdo. of Stutthof, 1000 pris., Apr. 44 - 28.1.45 (PWCB).

CIESZYNY - Cieszyń pow. Brodnica Poland Q 54/J 89
situated 3 miles SW of Malko

CC Kdo. of Stutthof, 1600 pris., Sept. 44 - 28.1.45 (PWCB).

J/BLONOWO Z/LEK pow. Brodnica Poland Q 54/K 39
CWC : 500 pris., end 1940 - 19.1.45 (PWCB)

NISKIE BRODNO pow. Brodnica Poland -
CC Kdo. of Stutthof, 500 pris., Sept. 44 - Jan. 45 (PWCB).

KRZEMIENIEWO pow. Lubawa Poland Q 54/E 01
CC Kdo. of Stutthof, 450 pris., 15.9.44 - 18.1.45 (PWCB).

GWIZDZINY - Gwisdzyn pow. Lubawa Poland Q 54/E 11
CC Kdo. of Stutthof, 400 pris., 23.8.44 - 15.1.45 (PWCB).

GUTOWO pow. Lubawa Poland Q 54/E 22
 CC Kdo. of Stutthof, 1000 pris., Sept. 44 - 15.1.45 (PWCB).

MAGUSZEWO pow. Dzialdowo Poland Q 54/E 32
 Forced labour camp : 480 Jews, 15.9.44 - Dec. 44 (PWCB).

DZIALDOWO - Soldau Poland Q 54/E 40
 Forced labour camp : 1000 inmates, Dec. 39 - 19.1.45 (PWCB).

LEWICZYN pow. Mlawa Poland Q 54/K 58
 Forced labour camp : 100 inmates, 1.4.40 - 1.12.41 (PWCB).

MIERZYNEK pow. Lipno Poland Q 54/J 58
 CC Kdo. of Stutthof, 3600 pris., 6.9.44 - 14.1.45 (PWCB).

CHOZEN pow. Lipno Poland Q 53/K 05
 CWC : of 600 workers, earthwork, Aug. 44 - 19.1.45 (PWCB).

MALANOWO pow. Lipno Poland Q 53/J 95
 CWC : 600 workers, earthwork, Aug. 44 - 19.1.45 (PWCB).

TLUCHOWEK - Tluchewe pow. Lipno Poland Q 53/J 94
 CWC : 400 workers, earthwork, 15.9.44 - 17.1.45 (PWCB).

KLOBUKOWO pow. Lipno Poland Q 53/J 94
 CWC : 400 workers, earthwork, 15.9.44 - 17.1.45 (PWCB).

CHALIN pow. Lipno Poland Q 53/J 94
 CWC : 4000 workers, earthwork, 10.9.44 - 15.1.45 (PWCB).

WIEBIGIE pow. Lipno Poland Q 53/J 84
 CWC : 5000 workers, earthwork, Sept. 44 - 19.1.45 (PWCB).

ZLOWODY pow. Lipno Poland -
 CWC : 1000 workers, earthwork, Sept. 44 - 20.1.45 (PWCB).

LOCHOCIN pow. Lipno Poland Q 53/J 74
 CWC : 2000 workers, earthwork, 5.7.44 - 20.1.45 (PWCB).

ZADUSZNIKI pow. Lipno Poland Q 53/J 74
 CWC : 1500 workers, earthwork, Sept. 44 - 20.1.45 (PWCB).

N/SIEGNIEWO pow. Lipno Poland Q 53/J 74
 CWC : 2000 workers, earthwork, Oct. 44 - 20.1.45 (PWCB).

KROJCZYŃ pow. Lipno Poland Q 53/J 74
 CWC : 2000 workers, earthwork, Dec. 44 - 20.1.45 (PWCB).

KREPI pow. Lipno Poland -
 CWC : 1000 workers, earthwork, Dec. 44 - 20.1.45 (PWCB).

POLIK pow. Sierpc Poland Q 53/K 16
 Forced labour camp : 100 inmates, May - 20.10.40 (PWCB).

SIERPC pow. Sierpc Poland Q 53/K 15
 Forced labour camp : 180 inmates, 1941 - 44 (PWCB).

POLESIE pow. Sierpc Poland -
 Forced labour camp : 100 inmates, spring - autumn 43 (PWCB).

FLOCK Poland Q 53/K 12
 Prison : Gerichtsgefangnis in Gearingstr. (BNFB).

BI/LOBRZEGI pow. Plock Poland Biale : Q 53/K 03
 CWC : 220 workers (PWCB).

BIELSK pow. Plock Poland Q 53/K 13
 Forced labour camp : 120 inmates, 1.1.42 - March 43 (PWCB).

GR/LEWO pow. Plock Poland Q 53/K 44
 Forced labour camp : 200 inmates, Nov. 40 - Dec. 43 (PWCB).

DROBIN pow. Plock Poland Q 53/K 34
 Forced labour camp : 200 inmates, May 40 - Nov. 43 (PWCB).

M/LSZYCE pow. Lewicz Poland Q 53/P 27
 Forced labour camp : 100 inmates, 1941 - 16.1.45 (PWCB).

LESSLAU - Wloclawek pow. Wloclawek Poland Q 53/J 73
 CC Kde. of Auschwitz (Polish Red Cross, BNFB).
 Prison : Haftanstalt Leslau (Personal file of former inmate).

WARTHBRUECK - Kole Poland Q 53/O 38
 Prison : "Stammlager Warthbruecken", comprising :
 Untersuchungshaftanstalt,
 Gerichtsgefangnis (personal file of former inmate).

CHELMNO pow. Kole Poland Q 53/O 47
 In extermination camp existing 8.12.41 - 18.1.45 (PWCB).

SWINICE pow. Turck Poland Q 53/O 56
 CWC : 11000 workers, earthwork, July 44 - Jan. 45 (PWCB).

SOLTYSY pow. Wielun Poland Q 52/T 26
Ghetto of 200 Jews, 8.1. - Aug. 42 (PWCB).

LUTUPOW pow. Wielun Poland Q 52/T 29
Forced labour camp : 200 inmates, 19.7. - 18.8.41 (PWCB).

MIERZYCE pow. Wielun Poland Q 52/T 37
CWC : 6000 workers, earthwork, 4.8. - 15.11.44 (PWCB).

SIEMKOWICE pow. Wielun Poland Q 52/T 57
CWC : 8000 workers, earthwork, 11.8.44 - 18.1.45 (PWCB).

RADOMSKO - Radom Poland Q 52/T 96
Prison : (BNTB).

NIECHMIROW pow. Sieradz Poland Q 52/T 49
Forced labour camp : 250 inmates, July 42 - 2.7.44 (PWCB).

WARTA pow. Sieradz Poland Q 52/0 33
CWC 2000 workers, earthwork, Sept. 44 - 15.1.45 (PWCB).

BURZENIN pow. Sieradz Poland Q 52/0 40
Forced labour camp : 220 inmates, Febr. 42 - 2.7.44 (PWCB).

BOGUMILLOW pow. Sieradz Poland Q 52/0 41
Forced labour camp : 100 inmates, Apr. 43 - July 44 (PWCB).

LITZMANNSTADT - Ledz Poland Q 52/0 93
Prisons : Kuhlhof (BNTB),
Jugendbewahrlager, Robert Kochstr. 16 (BNTB),
Danzigerstr. (BNTB).
CWC : 3000 persons, 1940 - 19.1.45 (PWCB).

RADOGOSZCZ pow. Lodz Poland Q 52/0 94
suburb of Lodz

Prison : Sicherungsanstalt for women (BNTB)

Forced labour camp : 3000 inmates, 1940 - Jan. 45 (PWCB).

ANTONIEW - Sikawa pow. Lodz Poland Q 52/0 94
CWC : 1000 workers, 12.3.43 - 18.1.45 (PWCB)

DZIERZAZNA pow. Lodz Poland Q 52/0 45
CWC : 200 workers, March 1943 - Jan. 45 (PWCB).

KLUKI pow. Piotrkow Poland Q 52/T 79
CWC : 2000 workers, earthwork, Oct. 44 - Jan. 45 (PWCB)

KLESZCZOW pow. Piotrkow Poland Q 52/T 87
CWC : 230 workers, earthwork, Dec. 44 - 17.1.45 (PWCB).

SULEJOW pow. Piotrkow Poland Q 52/U 29
CWC : 9000 workers, 1.8.44 - 18.1.45 (PWCB).

WADLEW pow. Piotrkow Poland Q 52/0 80
CWC : 780 workers, earthwork, 20.11.44 - 16.1.45 (PWCB).

PIOTRKOW pow. Piotrkow Poland Q 52/U 19
Forced labour camp : 690 Jews in the Ul. 1. Maja, 1.8.43 - 28.11.44,
Forced labour camp : 1000 " " " Ul. Sulc jowska, 1.8.43 - 22.11.44,
Forced labour camp : 3000 " (PWCB): see Poniatow.

PONIATOW pow. Piotrkow Poland Q 52/U 19
situated 2½ miles SE of Piotrkow.

Forced labour camp : 3000 Jews "Piotrkow" (PWCB), was situated
in Poniatow (BNTB).

DLUTOW pow. Lask Poland Q 52/O 81
CWC : 1800 workers, earthworker, 20.10.44 - 16.1.45 (PWCB).

ZELOW pow. Lask Poland Q 52/O 70
Forced labour camp : 900 inmates, Nov. 42 - Nov. 44 (PWCB).

HERBERTOW pow. Lask Poland -
Forced labour camp : 500 inmates, 6.9.43 - 6.9.44 (PWCB).

NIEWADOW pow. Brzeziny Poland Q 52/P 22
CWC : 1150 workers, 1942 - Dec. 44 (PWCB).

ZAWADA pow. Brzeziny Poland Q 52/P 21
Forced labour camp : 300 inmates, Oct. 42 - March 44 (PWCB).

MICHALOW pow. Skierniewice Poland Q 52/P 56
CWC : 118 workers, earthwork, 10.12.44 - 16.1.45 (PWCB).

NOWY DWOR pow. Skierniewice Poland Q 52/P 54
CWC : 4000 workers, earthwork, Aug. - Nov. 44 (PWCB).

SKIERNIEWICE Poland Q 52/P 45
CWC : 2000 workers, earthwork, Aug. 44 - 16.1.45 (PWCB).

KAMION pow. Skierniewice Poland Q 52/P 45
CWC : 5000 workers, earthwork, Aug. - Nov. 44 (PWCB).

DABROWICE pow. Skierniewice Poland Q 52/P 35
Forced labour camp : 300 Jews, 1942 - 44 (PWCB).

BYCZKI pow. Skicrniewicz Poland Q 52/P 34
 CWC : 500 workers, earthwork, Nov. 44 - Jan. 45 (PWCB).

• •

RECZKOW pow. Konskie Poland Q 52/U 37
 CWC : 200 workers, earthwork, 5.9.44 - 14.1.45 (PWCB).

• • •

CZERMNO pow. Konskie Poland Q 52/U 36
 CWC : 500 workers, earthwork, Nov. 44 - 13.1.45 (PWCB).

• • •

WASOSZ pow. Konskie Poland R 52/U 66
 CWC : 300 workers, earthwork, Nov. 44 - 12.1.45 (PWCB).

• • •

GORY MOKRE pow. Konskie Poland R 52/U 57
 CWC : 550 workers, earthwork, Aug. 44 - 16.1.45 (PWCB).

• • •

JOZEFOW pow. Konskie Poland -
 CWC : 250 workers, earthwork, 15.9.44 - 14.1.45 (PWCB).

• • •

SKARZYSKO KAMIENIA pow. Konskie Poland R 52/U 96
 Forced labour camp : 8000 Jews, Aug. 42 - July 44 (PWCB).

• • •

BLIZIN pow. Konskie Poland R 52/U 86
 Forced labour camp : 5000 inmates, 8.3.43 - July 44 (PWCB).

• • •

PARZYMCZY pow. Czestochowa Poland Q 52/T 45
 Forced labour camp : 300 Jews, 1942 - 45 (PWCB).

• • •

UJAZDOWEK pow. Cielchanow Poland -
 Forced labour camp : 100 inmates, March 41 - Nov. 44 (PWCB).

CIECHANOW - Zichenau pow. Ciechanow Poland R 53/K 76

Forced labour camp : 100 inmates, Dec. 39 - Nov. 44 (PWCB).

CWC : 250 workers, 1940 - 42 (PWCB).

SANSK J. NOWSKO pow. Ciechanow Poland R 53/K 74

Forced labour camp : 150 inmates, 2.5.41 - 17.1.43 (PWCB).

TRETOWO pow. Ciechanow Poland -

Forced labour camp : 200 inmates, 1.6.41 - Aug. 42 (PWCB).

SMIECIN NOWY pow. Ciechanow Poland -

Forced labour camp : 120 inmates, Apr. 41 - Oct. 43 (PWCB).

WEGRZYNOW pow. Ciechanow Poland R 53/F 06

Forced labour camp : 250 inmates, Jan. - March 41 (PWCB).

NARTY pow. Sochaczow Poland R 53/P 69

Forced labour camp : 300 Jews, April, - autumn 41 (PWCB).

WILANOW pow. Warszawa Poland R 53/L 08

Forced labour camp : 400 Jews, Apr. - 1.12.42 (PWCB).

ZACISZE pow. Warszawa Poland R 53/L 09

Forced labour camp : 1000 inmates, 1941 - 44 (PWCB).

LEGIONOWO pow. Warszawa Poland -

Forced labour camp : 100 Jews, 1941 - 43 (PWCB).

(FALENICACH)

F/LENCIA pow. Warszawa Poland R 53/L 18

Forced labour camp : 100 Jews, 15.8.42 - 7.5.43 (PWCB).

REMBERTOW pow. Warszawa Poland R 53/L 19

CWC : "Poligon", 2000 workers, earthwork, July - Sept. 44
(PWCB).

WARSZAU - Warszawa Poland R 53/L 09

CC "Warschau", established as such on 15.8.43 (Photocopies of Gestapo acts Duesseldorf), probably from the Warschau Ghetto (BNTB); last occurs on 5.1.44 (Oranienburg book shipments).

Prison : Parviastr. (BNTB),
Mokotow Rakowitschstr. (BNTB).

Forced labour camp : ul. Goscia 24, 350 inmates, March 43 - 44 (PWCB).

NOWY DWOR pow. Warszawa Poland R 53/K 81

CWC "Szkola", 100 workers earthwork, Aug. 44 - 15.1.45 (PWCB),
ul. Warszawska, 100 workers earthwork, Aug. 44 - 15.1.45 (PWCB).

POMIECHOWEK pow. Warszawa Poland R 53/K 81

Forced labour camp : 1000 inmates, 10.3.41 - 30.9.44 (PWCB).

WIKTOROW - RYBNO pow. Warszawa Poland R 53/F 10

CWC : 300 workers, Aug. 44 - 16.1.45 (PWCB).

KORCZEW pow. Warszawa Poland -

Forced labour camp : 400 Jews, 1941 - Aug. 43 (PWCB).

MLAWA pow. Mlawa Poland R 54/K 38

Forced labour camp : 200 inmates, 1940 - Jan. 45 (PWCB).

CHOJNOWO pow. Mlawa Poland -

Forced labour camp : 150 inmates, June - Nov. 40 (PWCB).

CHODKOWO pow. Makow Maz. Poland R 54/F 07
 Forced labour camp : 200 inmates, Oct. 40 - Apr. 41 (PWCB)

MAKOW M/ZOWIECKI pow. Makow Maz. Poland R 53/F 05
 Forced labour camp : 190 inmates, 1940 - 44 (PWCB).

NOWA WIES pow. Makow Maz. Poland R 53/F 10
 Forced labour camp : 400 inmates, 7.1.42 - 30.3.43 (PWCB).

ROZAN pow. Makow Maz. Poland -
 Forced labour camp : 350 Jews, May. - Aug. 43 (PWCB).

JACIIZEK pow. Makow Maz. Poland R 53/F 06
 Forced labour camp : 400 inmates, Aug. 43 - March 44 (PWCB).

BIEDRZYCE - KOZIEGLOWY pow. Makow Maz. Poland R 53/F 16
 Forced labour camp : 100 inmates, 20.10.41 - 15.5.42 (PWCB).

MALOWIDZ pow. Przasnysz Poland R 54/F 09
 CWC : 100 workers, in 1940 (PWCB).

PRZASNISZ pow. Przasnysz Poland R 53/K 97
 Forced labour camp : 100 inmates, 1941 - 43 (PWCB)

STRZALKI pow. Ostroleka Poland R 54/F 29
 CWC : 350 workers, 15.1.44 - 17.1.45 (PWCB).

LIZEK pow. Ostroleka Poland R 54/F 38
 Forced labour camp : 100 inmates, June 40 - June 43 (PWCB).

MALY FLOCK pow. Lanza Poland R 54/L 60
 CWC : 400 workers, earthwork, autumn - Dec. 44 (FWCB).

CZERWONE pow. Lanza Poland R 54/L 62
 CWC : 150 pers., Dec. 44 - 20.1.45 (FWCB).

RUTKI pow. Lanza Poland S 54/F 99
 CWC : 100 workers, 1942 - July 44 (FWCB).

LINDRYCHY pow. Szezuszyn Poland R 54/L 73
 Forced labour camp : 250 inmates, 5.9. - 27.10.44 (FWCB).

GRAJEWO pow. Szezuszyn Poland S 54/L 94
 Forced labour camp : 180 inmates, July 41 - 21.1.45 (FWCB).

BOGUSZE pow. Szezuszyn Poland S 54/A 95
 Forced labour camp : 1000 inmates, Oct. 42 - July 44 (FWCB).

DRESTWO pow. Szezuszyn Poland S 54/B 15
 CWC : 400 workers, earthwork, Oct. - Dec. 44 (FWCB)

CHRUSLICE pow. Radom Poland R 52/U 99
 Forced labour camp : 600 Jews, 19.8.41 - 5.5.44 (FWCB).

LESIOW pow. Radom Poland R 52/L 10
 Forced labour camp : 700 Jews, 1942 - Jan. 45 (FWCB).
 see also Radom.

JEDLINSK pow. Radom Poland R 52/L 00
 Forced labour camp : 2000 Jews, Dec. 42 - Febr. 44 (FWCB).

WOLA GOZDOWSKA pow. Radom Poland -
Forced labour camp : 150 inmates, Apr. 41 - March 43 (PWCB).

R/ DOM pow. Radom Poland R 52/Q 19
see Jedlinsk 2000 Jews,
see Leslow 700 Jews, +)
see Chruslice 600 Jews.

+) In autumn 1944, CC and Ghetto Radom were evacuated to
Vaihingen/Enz (USFET memorandum).

KICZKOWICE pow. Radom Poland -
Forced labour camp : 5000 Jews, 1941 - July 44 (PWCB).
100 inmates, 1941 - July 44 (PWCB).

KONARY pow. Grojce Poland R 52/L 14
CWC : 200 workers earthwork, July - Aug. 44 (PWCB).

OSTROLEKA pow. Grojce Poland R 52/P 80
CWC : 200 workers, earthwork, 22.7. - Aug. 44 (PWCB).

DEBNOWOLA pow. Grojce Poland R 52/P 82
CWC : 200 workers, earthwork, 25.7. - 1.8.44 (PWCB).

ULENIEC pow. Grojce Poland R 52/P 84
Forced labour camp : 200 inmates, July - 1.8.44 (PWCB).

CHYZYNY pow. Grojce Poland -
Forced labour camp : 600 inmates, 1942 - 43 (PWCB).

SIEDLINO pow. Flonsk Poland R 53/K 62
Forced labour camp : 250 inmates, 15.5. - 1.9.40 (PWCB).

KUCHARY pow. Plonsk Poland R 53/K 63
 Forced labour camp : 150 inmates, Nov. 40 - Nov. 41 (PWCB).

GRODZIEC pow. Plonsk Poland R 53/K 51
 Forced labour camp : 200 inmates, 11.7.40 - 20.2.43 (PWCB).

BOGUSZYN STARY pow. Plonsk Poland R 53/K 51
 Forced labour camp : 250 inmates, autumn 1940 - Dec. 42 (PWCB).

STARACHOWICE pow. Ilza Poland R 52/Q 05
 Forced labour camp : 5000 Jews, Oct. 42 - summer 43 (PWCB),
 3000 " summer 43 - July 1944 (PWCB),
 100 inmates, 1943 - spring 44 (PWCB).

JOZEFOW pow. Pulawy Poland R 52/Q 46
 Ghetto : 250 Jews, 1.5. - 1.9.41 (PWCB).
 Forced labour camp : 800 Jews, 1.4.40 - 1.3.42 (PWCB).

KAZIMIERZ DOLNY pow. Pulawy Poland R 52/Q 68
 Forced labour camp : 120 inmates, spring 40 - Oct. 42 (PWCB).

PULAWY pow. Pulawy Poland R 52/Q 69
 Forced labour camp : 200 Jews, 1942 - 43 (PWCB).

GOLAP pow. Pulawy Poland -
 Forced labour camp : 100 Jews, in 1942 (PWCB).

PONLITOWA pow. Pulawy Poland R 52/Q 77
 Forced labour camp : 18000 Jews, autumn 41 - July 44 (PWCB).

WYMYSLOW pow. Pulawy Poland R 52/Q 77
 Forced labour camp : 200 Jews, 1942 - Nov. 43 (PWCB).

STEZYCKA pow. Garwolin Poland R 52/L 51
Forced labour camp : 150 Jews, Apr. - June 43 (PWCB).

TRENK pow. Garwolin Poland R 52/L 61
Forced labour camps :

"Lotwisko", 1000 Jews, May 41 - 23.7.44 (PWCB),
"Most, Kol.", 200 " May 42 - June 43, (PWCB),
"Ul. Lipowa", 200 " Aug. 42 - Febr. 43, (PWCB),
"St. Kol. Deblin", 120 " Oct. 42 - June 43, (PWCB).

GARWOLIN pow. Garwolin Poland R 52/L 45
Forced labour camp : 250 inmates, Dec. 42 - 23.7.44 (PWCB).

SEROCK pow. Pultusk Poland R 53/F 02
Forced labour camp : 200 inmates, May 40 - May 44 (PWCB).

STUDZIANKI pow. Pultusk Poland R 53/K 82
OWC : 400 workers, 25.11.44 - 17.1.45 (PWCB).

NASIELSK pow. Pultusk Poland R 53/K 82
Forced labour camp : 150 inmates, 1941 - 43 (PWCB).

KARCZEW pow. Sokolow Poland -
Forced labour camp : 400 Jews, 1942 - 43 (PWCB).

MALISZEWA Nowa pow. Sokolow Poland R 53/F 72
Forced labour camp : 300 inmates, Aug. 41 - Aug. 44 (PWCB).

TREBLINKA pow. Wegrow Poland R 53/F 73
CC extermination camp, 1.6.42 - Nov. 43 (PWCB).
Forced labour camp : 1000 inmates, 1940 - 44 (PWCB).

KRZESK pow. Siedlec Poland -
Forced labour camp : 100 Jews, May - autumn 40 (PWGB).

SIEDLCE pow. Siedlec Poland R 53/L 88
Prison : (BMTB)
Forced labour camps:

"Koszary" 100 Jews, beginning 40 - Oct. 42,
"Warszt. Kol." 500 " Jan. 41 - March 43,
at Brzeska, 2000 " autumn 41 - Oct. 42,
"Zwirownia", 300 " autumn 41 - 14.5. 42.

LEKI pow. Siedlec Poland -
Forced labour camp : 350 Jews, 1941 - 43 (PWGB).

STOK RUSKI pow. Siedlec Poland S 53/L 98
CWC : 1000 workers, 1940 - 42 (PWGB).

KLIMONNY pow. Siedlec Poland S 53/M 08
Forced labour camp : 1000 Jews, 1.3. - July 42 (PWGB).

MURKUSZOW woj. Lubelskie Poland R 52/Q 89
Forced labour camp : 100 Jews, 30.5. - 2.9.42 (PWGB).

AUGUSTOW pow. Augustow Poland S 54/B 36
Forced labour camp : 120 inmates, Sept. 41 - July 44 (PWGB).

NOWY DWOR pow. Sokolka Poland S 54/B 64
Forced labour camp : 120 Jews, May - Nov. 42 (PWGB).

SOKOLKA pow. Sokolka Poland S 54/B 62
Forced labour camp : 150 inmates, 1942 - 44 (PWGB).

SUWALKI pow. Suwalki Poland S 55/B 29
 GWC's : 100 workers, Febr. 40 - Sept. 44 (PWCB).
 "ciogielnia", 200 workers, March 40 - July 44 (PWCB).

BIALYSTOK pow. Biela Podl. Poland S 54/G 49
 Prison : (BNTB)
 GWC : (NNTB).

BIELSK PODLASKI pow. Bielsk Podlaski Poland S 53/G 45
 Forced labour camp: 100 inmates, autumn 41 - 16.7.44 (PWCB).

LESNA PODLASKA pow. Biela Podlaska Poland S 53/M 37
 Forced labour camp : 500 Jews, 1940 - 41 (PWCB).

MILZEWICZE pow. Biela Podlaska Poland -
 Forced labour camp : 800 Jews, autumn 42 - May 44 (PWCB).

MILSZEWICE DUZE pow. Biela Podlaska Poland -
 Forced labour camp : 1000 Jews, autumn 42 - Febr. 44 (PWCB).

BIALA PODLASKA pow. Biela Podlaska Poland S 53/M 46
 Forced labour camp : 3000 Jews, 1941 - 17.12.42 (PWCB).

SZENEJKI pow. Biela Podlaska Poland -
 Forced labour camp : 300 Jews, spring 41 - autumn 42 (PWCB)

ROSSOSZ pow. Biela Podlaska Poland S 52/M 44
 Forced labour camp : 250 Jews, 26.1. - 1.10.40 (PWCB).

ROGOZNICA pow. Radzyn Poland S 53/M 26
 Forced labour camp : 400 Jews, May 41 - 15.3.44 (PWCB).

OSSOWA pow. Radzyna Poland S 52/H 24

Forced labour camp : 400 Jews, June 41 - Oct. 43 (PWCB).

OSOWA pow. Wlodawa Poland S 52/H 70

Forced labour camp : 1000 Jews, 1941 - 43 (PWCB).

WLODAWA pow. Wlodawa Poland S 52/H 71

Forced labour camp : 600 Jews, autumn 42 - 30.4.43 (PWCB).

KRYCHOW pow. Wlodawa Poland -

Forced labour camp : 2500 inmates, beginning 42 - March 44 (PWCB).

SOBIBOR pow. Wlodawa Poland S 52/H 80

CC, extermination camp, March 42 - Nov. 43 (PWCB).

DOROHUSZ pow. Chelm Poland S 52/R 97

Forced labour camp : 300 Jews, 1940 - 41 (PWCB).

KANIE pow. Chelm Poland S 52/R 46

Forced labour camp : 150 Jews, 1941 (PWCB).

CZERNIEJOW pow. Chelm Poland S 52/R 86

Forced labour camp : 200 Jews, in 1941 (PWCB).

TRAWNIKI pow. Lublin Poland S 52/R 36

Transit camp : for Jews (Ducsdorf Gestapo files, on 22.4.42).

IZBICA pow. Krasnystaw Poland S 51/R 54

Transit camp: for Jews (Gestapo Transport List).

LUBLIN pow. Lublin Poland S 52/R 08

CC "Majdanek", established from a former POW. camp on 9.4.43, address: Lublin, Gartenstr. 12, "Lagerstufe I and II"; departments for men and women (Photocopies of the Dusseldorf Gestapo notes) - On 6.11.42 transports of Jewish CC inmates were ordered from Germany to "Kriegsgefangenenlager Lublin" (Photocopies of the Dusseldorf Gestapo files). The CC was closed in July 44. (PWCB).

Prison : Wehrmachtgefängnis, Lindenstr. 4 (BMPB).

WIERZCHOWISKA pow. Krasnik Poland S 51/Q 92

Forced labour camp : 400 inmates, 1940 - 42 (PWCB).

JANOW LUBELSKI pow. Krasnik Poland S 51/R 02

Forced labour camp : 1000 inmates, 1941 - 43 (PWCB).

LYSLKOW pow. Krasnik Poland R 51/Q 82

Forced labour camp : 160 inmates, 15.3.41 - 20.4.43 (PWCB).

BUDZYN pow. Krasnik Poland R 51/Q 84

CC Kdo. of Majdanek, 3000 pris., Oct. 42 - 6.7.44 (PWCB).

TARNOGROD pow. Bilgoraj Poland S 51/W 28

Forced labour camp : 1500 inmates, 27.5. - 21.7.44 (PWCB).

DYLE pow. Bilgoraj Poland S 51/R 20

Forced labour camp : 250 inmates, Dec. 41 - Dec. 42 (PWCB)

PRZYCHOJEC pow. Lancut Poland S 51/V 97

CWC : 400 workers, earthwork, Apr. - 22.7.44 (PWCB).

WIERZAWICE pow. Lancut Poland S 51/W 06

CWC : 400 workers, earthwork, 20.5. - 23.7.44 (PWCB).

STEDLANA pow. Lancut Poland R 51/V 46
 CWC : 400 workers, earthwork, Apr. - 22.7.44 (PWCB).

ZARUDZIE pow. Zamosc Poland -
 Forced labour camp : 150 inmates, 19.11.41 - 1.12.42 (PWCB).

JAROSLAW Poland S 51/W 24
 Prison : (BNTB)

RACHANIE pow. Tomaszow Lub. Poland S 51/R 70
 Forced labour camp : 1000 Jews, Apr. - Aug. 43 (PWCB)

TYSZOWCE pow. Tomaszow Lub. Poland S 51/R 91
 Forced labour camp : 600 Jews, 1940 - autumn 1941.

BELZEC pow. Tomaszow Lub. Poland S 51/W 78
 CC, extermination camp, Nov. 41 - Jun 43 (PWCB), under an
 "Einsatzkdo of the RSD" (US Army interrogation).

MIRCZE pow. Hrubieszow Poland S 51/S 01
 Forced labour camp : 300 inmates, June - Oct. 40 (PWCB).

RAWA RUSKA U.S.S.R. - S 51/W 86
 Forced labour camp : of Jews (BNTB).

BIELSKA
BIELSKA pow. Jaroslaw Poland S 50/V 36
 CWC : 300 workers, earthwork, May - 24.7.44 (PWCB).

RADYMO pow. Jaroslaw Poland S 50/V 56
 Forced labour camp : 200 Jews, autumn 42 - March 43.

ROZBORZ DLUGI pow. Jaroslaw R 50/V 36

CWC: 720 workers, earthwork, 13.4.43 - 25.7.44 (PWCB)

SWIEBODNIA pow. Jaroslaw R 50/V 26

CWC : 600 workers, earthwork 24.5.44 - 24.7.44 (PWCB)

DALESZYCE pow. Kielce R 51/U 82

CWC: 150 workers, earthwork, 25.9. - 30.11.44 (PWCB)

KIELCE pow. Kielce R 51/U 73

Forced labour camps : " Hasag Granat " 500 Jews, 2.9.42 - 20.8.44
" Henrykow " 400 Jews, 1.6.43 - 1.8.44
" Ludwikow " 330 Jews 1.6.43 - 1.8.44
" Stolarska " 1360 Jews 30.8.43 - 1.4.43
(PWCB)

HOLENDRY pow. Kielce R 51/U 81

CWC : 180 workers, earthwork, Nov.44 - 6.1.45 (PWCB)

PRZENSZYN pow. Opatow -

CWC : 120 workers, earthwork, 15.10.44 - 3.1.45 (PWCB)

OSTROWIEC pow. Opatow R 51/Q 24

Forced labour camp : 2000 Jews , 1.1.43 - 3.8.44 (PWCB)

BODZIECHOW pow. Opatow R 51/Q 34

Forced labour camp : 200 Jews, 1.10.42 - 16.2.43 (PWCB)

CWC: 200 workers, earthwork, Oct.44 - 15.1.45 (PWCB)

NOMINA pow. Opatow R 51/Q 13

CWC : 200 workers, earthwork, 10.11.44 - 12.1.45 (PWCB).

SANDOMIERZ pow. Sandomierz R 51/Q 51

Forced labour camp : 350 Jews, Oct. 42 - Jan. 44 (PUCB)

KLONOW pow. Sandomierz. R 51/Q 31

Forced labour camp : 300 inmates, Sept. 43 - autumn 44 (PUCB)

RACLAWICE pow. Nisko R 51/V89

CWC 370 workers , earthwork, 20.5. - 28.7.44 (PUCB)

ZARZECZE pow. Nisko R 51/V 89

Forced labour camp : 800 Jews, Nov. 39 - Apr. 40 (PUCB)

GLOGOJ pow. Rzeszow R 51/V 65

Forced labour camp : 120 Jews , 20.7. - 25.10.42 (PUCB)

JESIONKA pow. Rzeszow -

Forced labour camp: 300 Jews, June - autumn 42 (PUCB)

PRZYLEK pow. Kolbuszowa R 51/V 47

Forced labour camp : 300 Jews, summer 42 - winter 43 (PUCB)

HUTA KOMOROWSKA pow. Kolbuszowa R 51/V 68

CWC : 700 workers, Apr. 41 - 25.7.44 (PUCB)

MIELEC pow. Mielec R 51/V 37

CC Kdo of Plaszow working for the Heinkel-Werke (US Army Handbook on CC)

CYRANKA pow. Mielec R 51/V 37

Forced labour camp : 2000 inmates, March 42 - Aug. 44 (PUCB)

DEBICA pow. Debica R 51/V 24

Forced labour camp : 1600 Jews, July 42 - Apr. 43 (PFCB)

MOKRZEC pow. Debica R 51/V 24

CWC : 200 workers, Oct. - Dec. 44 (PFCB)

PIPIŃ pow. Debica R 51/V 24

CWC ; 100 workers, earthwork, 1.11.44 - 15.1.45 (PFCB)

PUSZKOW pow. Debica. R 51/V 35

Forced labour camp : 300 inmates, autumn 41 - July 44 (PFCB)

PILZNO pow. Debica R 50/Z 48

CWC, 150 workers, earthwork, 1.9.44 - 16.1.45 (PFCB)

GOLECZYNA pow. Debica R 50/Z 58

CWC : 100 workers, earth-work, Sept.-Dec 44. (PFCB)

SLUPIA pow. Stopnica R 51/V 08

Forced labour camp : 180 inmates, 1941 - 44 (PFCB)

BIECHOW - DOLNE pow. Stopnica R 51/Z 98

Forced labour camp : 200 Jews, spring - autumn 42 (PFCB)

PIESTRZEC pow. Stopnica R 51/Z 98

CWC : 150 workers , earthwork, 1.10.44 - 12.1.45 (PFCB)

JARZABKI pow. Stopnica R 51/U 90

CWC : 450 workers, earthwork , 1.10.44 - 12.1.45 (PFCB)

RACZYCE pow. Stopnica T 51/U 90
 CWC : 700 workers, earthwork, 20.10.44 - 12.1.45 (P/CB)

KAZIMIERZA WIELKA pow. Pinczow R 51/Z 66
 Forced labour camp : 100 inmates, 1940 - 45 (P/CB)

WISLICA Pow. Pinczow R 51/Z 69
 CWC : 140 workers, earthwork, Nov.44 - 12.1.45 (P/CB)

PINCZOW pow. Pinczow R 51/Z 69
 CWC : 500 workers, earthwork, Sept.44 - Jan.45

MŁODANY DUZE pow. Pinczow R 51/Z 69
 CWC : *1000 workers, earthwork , 20.8.44 - 12.1.45 (P/CB)

MICHALOW pow. Pinczow R 51/Z 69
 CWC : 600 workers, earthwork, 8.8.44 - 14.1.45 (P/CB)

KONIECMOSTY pow. Pinczow R 51/Z 77
 CWC ; 700 workers, earthwork, 15.10.44 - 12.1.45 (P/CB)

ZURAWNIKI pow. Pinczow R 51/Z 78
 CWC : 150 workers, earthwork, Oct. 44 - 12.1.45 (P/CB)

CHOTEL pow. Pinczow R 51/Z 78
 CWC 250 workers, earthwork , Oct. 44 - 12.1.45 (P/CB)

OTFINOZ pow. Dabrowa Tarnow R 51/Z 86
 CWC : 4000 workers, earthwork, Oct. 44 - 14.1.45 (P/CB)

GREBOSZOW pow. Dabrowa Tarnow R 51/Z 86

CWC : 180 workers, earthwork, Dec.44 - 13.1.45 (PUCB)

MIECHOWICE MAIE pow. Dabrowa Tarnow R 51/Z 86

CWC 400 workers, earthwork, Sept.44 - 14.1.45 (PUCB)

MIECHOWICE WIEKIE pow. Dabrowa Tarnow R 51/Z 86

CWC : 300 workers, earthwork, Sept.44 - 14.1.45 (PUCB)

DEMBLIN pow. Dabrowa Tarnow R 51/Z 86

CWC : 200 workers, earthwork , Nov.44 - 14.1.45 (PUCB)

WIERZCHOSLAWICE pow. Tarnow R 51/Z 84

CWC ; 500 workers, earthwork, 5.8.44 - 17.1.45 (PUCB)

OSTROW pow. Tarnow R 51/Z 94

CWC : 400 workers, earthwork , 5.8.44 - 17.1.45 (PUCB)

TARNOW pow. Tarnow R 51/Z 94

CWC 1100 workers, earthwork, Aug.44 - Jan.45 (PUCB)

KASNA DOINA pow. Tarnow R 50/Z 16

CWC: 600 workers, earthwork, Sept.44 - 15.1.45 (PUCB)

SIEMIECHOW pow. Tarnow R 50/Z 17

CWC: 600 workers, Febr. 44 - 20.1.45 (PUCB)

LICHWIN pow. Tarnow R 50/Z 18

CWC : 1300 pris., Nov.44 - 18.1.45 (PUCB)

GROMNIK pow. Tarnow R 50/Z 26

CWC: 950 pris., 25.9.44 - 12.1.45 (P/CB)

TUCHOW pow. Tarnow R 50/Z 27

CWC's: "Rynek", 250 workers, earthwork, Sept.44 - 12.1.45
in ul.Panska, 600 workers, earthwork, Oct.44 - 12.1.45
" Sokol ", 450 workers, earthwork, Oct. 44 - 12.1.45 (P/CB)

GNOJNIK pow. Brzesko R 50/Y 97

CWC : 500 workers, earthwork, 15.8.44 - 16.1.45 (P/CB)

FILIPOWICE pow. Brzesko R 50/Z 06

CWC : 200 workers, earthwork, 1944 - 45 (P/CB)

CZCHOW pow. Brzesko R 50/Z 06

CWC : 6000 workers, earthwork, 5.8.44 - 16.1.45 (P/CB)

ZABAWA pow. Brzesko Q 50/Y 69

CWC 500 workers, eathwork, 10.9.44 - 28.10.44 (P/CB)

WISNICZ NOWY pow. Bochnia R 50/Y 98

CWC : 1080 workers, eathwork. 1944 - 45 (P/CB)

RZEZANA pow. Bochnia R 50/Y 98

CWC : 120 workers, eathwork, 15.10.44 - 18.1.45 (P/CB)

KOBYLE pow. Bochnia R 50/Y 98

CWC 1000 workers, eathwork, 15.10.44 - 18.1.45 (P/CB)

SIARY SACZ pow. Nowy Sacz R 50/Y 94

CWC's : 250 workers, earth work. July 44 - 17.1.45 (P/CB)
300 " " " " Aug. 44 - Jan.45 (P/CB)

CHELMIEC

pow. Nowy Sacz

R 50/Y 94

CWC : 250 workers, earthwork, July 44 - 17.1.45 (PWCB)

RYTRO

Forced labour camp : 100 Jews, Febr.43 - Febr.44 (PWCB)

LIPIE

pow. Nowy Sacz

R 50/Z 05

Forced labour camp : 100 Jews, autumn 42 - spring 43 (PWCB)

NOWY SACZ

pow. Nowy Sacz

R 50/Z 06

Forced labour camp : 150 inmates, end 42 - autumn 44 (PWCB)

ROZNOU

pow. Nowy Sacz

R 50/Z 06

Forced labour camp : 100 Jews, summer - Dec. 42 (PWCB)

CWC : 800 workers, earthwork, 2.9.44 - 17.1.45 (PWCB)

GRYBOW

pow. Nowy Sacz

R 50/Z 14

CWC : 200 workers, earthwork. Oct. 44 - 15.1.45 (PWCB)

WOJNAROWA

pow. Nowy Sacz

R 50/Z 15

CWC : 500 workers, earthwork, Aug. 44 - 16.1.45 (PWCB)

LIMANOWA

pow. Limanowa

R 50/Y 85

Forced labour camp : 190 Jews, 18.8. - 5.11.42 (PWCB)

DUKLA

pow. Krosno

R 50/Z 73

Forced labour camp : 140 Jews , 13.8.42 - 15.11.42 (PWCB)
170 " 13.8.42 - 14.12.42 (PWCB)

KROSNO

pow. Krosno

R 50/Z 74

Forced labour camp : 120 Jews, 25.8.42 - 27.1.44 (PWCB)

GIESZYNA pow. Krosno R 50/Z 66
 Forced labour camp : 100 inmates, Nov.43 - 2.2.44 (PWCB)

FRYSZAK pow. Krosno R 50/Z 66
 Forced labour camp : 2000 Jews, July - Nov.41 (PWCB)

PRZECZYCA pow. Jaslo R 50/Z 57
 CWC : 250 workers, earthwork, 15.9.44 - 15.1.45 (PWCB)

SZEBNIE pow. Jaslo R 50/Z 65
 Forced labour camp: 5000 inmates, 1940 - Aug. 44 (PWCB)

STROZE pow. Gorlice R 50/Z 06
 CWC : 120 workers, earthwork, Sept. 44 - 15.1.45 (PWCB)

JEZOW WILCZYSKA pow. Gorlice R 50/Z 15,
 CWC : 450 workers, earthwork, 2.8.44 - 14.1.45 (PWCB)

BOBOWA pow. Gorlice R 50/Z 15
 CWC's: "Szkoła powozeczna" 380 workers, earthwork, Sept.44 - 14.1.45
 200 workers earthwork, Oct.44 - 14.1.445 (PWCB) (PWCB)

SIEDLIKA pow. Gorlice R 50/Z 25
 CWC : 200 workers, earthwork, Sept. - Oct. 44 (PWCB)

GORLICE pow. Gorlice R 50/Z 34
 CWC : 1000 workers, 1940 -45 (PWCB)

NOWY TARG pow. Nowy Targ Q 50/Y 53
 Forced labour camp : 100 Jews, 30.8.42 - 25.5.43 (PWCB)

ZAKOPANE

pow. Nowy Targ

Q 50/Y 41

CC Kdo. of Plaszow (Pol. Red Cross) working at the water power plant
(US Army CC Handbook)

CWC: 200 workers, summer 41 - Sept. 42 (PWCB)

CIESZYN

pow Cieszyn

Q 50/O 78

Prison : (BNTB)

CWC : (BNTB)

ZEBRZYDOWICE

pow. Cieszyn

Q 50/O 79

Forced labour camp : 200 Jews, Aug. 42 - March 44 (PWCB)

GOLESZOW - Gölleschau Pow. Cieszyn

Q 50/O 88

CC Kdo. of Auschwitz, 1200 pris., 1941 - 19.1.45 (PWCB), in a cement
factory (BNTB)

MIKUSZOWICE

pow. Biala Krak

Q 50/X 87

Forced labour camp : 100 inmates, winter 40 - Febr. 45 (PWCB)

JAWISZOWICE

pow. Biala Krak

Q 50/X 99

CC Kdo. of Auschwitz, working in coal mines (US Army CC Handbook)
Judge Jan Sehn, BNTB, not mentioned by PWCB)

CWC: in the coal mines, 3500 men (BNTB,)

RAJSKO

pow. Biala Krak

Q 51/Y 74

CC Kdo. of Auschwitz (PWCB)

CZECHOWICE

pow. Bielsko

Q 50/X 88

CC Kdo. of Auschwitz, working for the firm "Vacuum", 600 pris., autumn 44-
Jan. 45 (PWCB)

CC Kdo. of Auschwitz Czechowice - Dziedzice, see under Dziedzice.

DZIEDZICE pow. Bielsko Q 50/X 89
CC Kdo. of Auschwitz "Czechowice", 100 pris., 20.8.44 - end 44 (PWCB)

PLESS - Zwic pow. Zwic Q 50/X 96
CC Kdo. of Auschwitz "Altdorf" working for the "Fuerstlich Pless'sche Bergwerke AG" (US Army CC Handbook- Pol. Red Cross - BMTB-VVN not listed by PWCB)

WADOWICE - Wadowitz pow. Wadowice Q 50/Y 18
Prison : Haftanstalt, Nonotzkistr. (BMTB)

ANDRYCHÓW pow. Wadowice Q 50/Y 08
Forced labour camp , 120 Jews, Sept. 42 - Nov. 43 (PWCB)

SPYTKOWICE pow. Wadowice Q 50/Y 19
Forced labour camp : 360 Jews, Sept. 42 - Febr. 43 (PWCB)

KLOBUCK Q 51/T 45
CWC : (BMTB)

CZESTOCHAWA - Tschenstochau, w huj. Kieleckie Q 51/T 63
Prison : (BMTB)
Forced labour camps : "Hasag Pelzery", 5000 Jews , June 43- 16.1.45
"Hasag Apparatebau" 3100 Jews, 22.9.43-16.1.45
"Hasag Warta", 3000 Jews, summer 43 - 16.1.45
"Hasag Czestochawiarka" 2000 Jews, 1943-16.1.45 (PWCB)

GIDLE pow. Radomske Q 51/T 94
Forced labour camp : 170 inmates, Aug.-Oct. 42 (PWCB)

RYBNIK pow. Rybnik Q 51/Y 25
CC Kdo. of Auschwitz: see Czernica
Prison : Gerichtsgefängnis (BMTB)

CZERNICA - Charlottengrube pow. Rybnik Q 51/Y 13
situated 6 miles E of the town Rybnik, 2 miles N of the village Rydul-
towy and 1 mile S of its twin village Lukow at the entrance of the big
coal mine "Charlottengrube", which extends many miles under the surface.

CC Kdo. of Auschwitz "Charlottengrube b. Czernica, Rybnik" (Judge Jan Sehn
800 pris., 19.9.44 - 20.1.45 (PWCB))

RYDULTOWY pow. Rybnik Q 51/Y 55

CC Kdo. of Auschwitz, see Czernica

ZORY pow. Rybnik Q 51/Y 34

CWC : 550 workers, 1941 - 45 (PWCB)

PSZCZYNA pow. Pszczyna Q 50/X 79

CWC : (BNTB)

STARA KUZNICA - Althammer pow. Pszczyna Q 51/Y 46

CC Kdo. of Auschwitz, 500 pris., 1942 - 45 (PWCB)

WIRY pow. Pszczyna Q 51/Y 55

CWC : 100 workers, 1941 - Jan. 45 (PWCB)

KOBIOR pow. Pszczyna Q 51/Y 54

CC Kdo. of Auschwitz, 200 pris., 1942 - 43 (PWCB)

ORNONICOWICE pow. Pszczyna Q 51/Y 36

CWC : 750 workers, Apr. 41 - June 42 (PWCB)

LUKOW.

CC Kdo. of Auschwitz, see Czernica.

KRZESZE
~~GRZESZE~~

pow. Pszczyna

Q 51/Y 45

CIC : 400 workers, 1941 - 45 (P'CB)

ZANISC

pow. Pszczyna

Q 51/Y 45

CIC : 100 workers , 1943 - 45 (P'CB)

LAZISKA GORNE

pow. Pszczyna

Q 51/Y45

Forced labour camp : 150 Jews, March - Dec. 42 (P'CB)

BOZE DARY

pow. Pszczyna

Q 50/X 79

Forced labour camp : 600 inmates , 1943 - 18.1.45 (P'CB)

HARMEZE

pow. Pszczyna

Q 51/Y 64

CC Kdo. of Auschwitz, (Judge Jan Schn) see Plawy
(Polish War Crimes Comm.)

PLAWY

pow. Pszczyna

Q 51/Y 64

situated 1½ miles SSW of its twin village Harmeze

CCK do. of Auschwitz Harmeze - Plawy. (Polish Red Cross, Judge Jan Schn,
BNTB.)

HOLDUNOW - SMARDZOWICE pow. Pszczyna

Q 51/Y 65

Forced labour camp : of 500 Jews, March-42 - spring 43 (P'CB)

LEDZINY - Lawki

pow. Pszczyna

Q 51/Y 65

Ledziny is situated 3 miles N of Bierun, and Lawki is a small place 2½ miles farther.

CC Kdo. of Auschwitz, 1000 pris., 1943 - Jan. 45 (P'CB.)

BIERUN - BERUNA

pow. Pszczyna

Q 51/Y 65

CC Kdo. of Auschwitz (BNTB) see Ledziny - Lawki

SWIETOSCHLOWICE - Schwientochlowitz .pow. Katowice Q 51/Y 47

CC Kdo.of Auschwitz, working for the "OSMAG" (US Army CC Handbook) plant
"Eintrachtshuette" (Judge Jan Sehn) in the Heilgerstr.(BNTB)
1300 prisoners June 42 - 23.1.45 (PWCB)

Forced labour camp : "Florian Huette", 2800 inmates, Aug. 42 - 23.1.45

CWC: 600 workers in the "Eintrachtshuette" - Huta Zgoda - 1943 - Jan.45
(PWCB, BNTB)

SIEMIANOWICE .pow. Katowice Q 51/Y 57

CC Kdo.of Auschwitz, working for the "Oberschlesische Geratetechnik GmbH."
(US Army CC Handbook), plant "Laurahuette" 1600 pris., 1943-
23.1.45 (PWCB)

CHORZOW .pow. Chorzow Q 51/Y 57

CC Kdo.of Auschwitz in the "Koonigshuette"- Chrolewska Huta - (BNTB)
200 prisoners, March 44 - Jan.45 (PWCB)

CWC's: " szosa Kochlowicka", 2140 workers, 1943 - Jan.45, ul.Nowa.
150 workers, 1942 - 45. The mine "Kloofas" 130 workers, 1943-Jan.45
(PWCB)

HAJDUKI I - II .pow. Chorzow Q 51/Y 57

CC Kdo.of Auschwitz in "Bismarekhuette" (Judge Jan Sehn, BNTB).

LAGIEWNIKI - Slaskie .pow. Katowice Q 51/Y 57

CC Kdo.of Auschwitz, working for the "Hubertushuette" (Judge Jan Sehn),
200 prisoners, Sept. 44 - 15.1.45 (PWCB)

CWC : 800 workers, 1941 - Jan. 45 (PWCB)

LIPINY SLASKIE .pow. Katowice Q 51/Y 57

CWC : 299 workers , 1943 - 45 (PWCB)

KOCHLOWICE .pow. Katowice Q 51/Y 57

CWC : (BNTB)

KATOWICE - Kattowitz pow. Katowice Q 51/Y 57

Prison : Strafgefängenenlager fuer Auslaender in Uhlenwinkel (BNTB)
Nikolaistr. 10 A (BNTB)
Jugendgefängnis im Uhlenwinkel (BNTB)
Disciplinary camp (BNTB) of 150 inmates, 1944 - 45 (PWCB)

CWC's "Baldon Huette", 2000 workers, 1942 - 23.1.45 (PWCB)
plant "Katowice", 900 workers, end 42 - 17.1.45 (PWCB)
plant "Eminencja" 400 workers, 1942 - 45 (PWCB)

MYSZLOWICE - Myslowitz pow. Katowice Q 51/Y 66

CC Kdo. of Auschwitz working for the "Fuerstengrube" and the "Guenthergrube"
near Myslowice (Judge Jan Sehn) 1400 pris. in the Fuerstengrube
autumn 43 - 22.1.45 (PWCB)

Prison : Haftanstalt in Krakauerstr. 2 (BNTB)

Forced labour camp : ul. Powstanow, 1500 inmates, 1940-Jan.45 (PWCB)

CWC in the mines, 1000 workers, 1942 - Jan.45 (PWCB)

TARNOWITZ^{POW} Tarnowskie Gory Q 51/Y 49

Forced labour camp : of Jews, see Lasowice

Prison : (BNTB)

CWC the Bahnbetriebswerk Deutschland (BNTB)

LASOWICE pow. Tarnowskie Gory Q 51/Y 49

Forced labour camp, 2000 Jews, 1940 - 15.1.45 (PWCB)

CWC : " Gemeinschaftslager 21 - Massdschutz" 6000 women, 1200 men (BNTB)

Remark: the Jewish camp seems to be same with the "Gemeinschaftslager 11"

TARNOWICE STARE pow. Tarnowskie Gory Q 51/Y 49

CWC : 150 workers, 1940 - 45 (PWCB)

BRZOZOWICE - Kamien pow. Tarnowskie Gory Q 51/Y 49

CWC : 260 workers, 1942 - Jan.45 (PWCB)

Concentration camp "Auschwitz", begun at the beginning of 1940 by establishing a concentration camp in the suburb Zasole of Oswiecim, in some premises of the Polish Tobacco Monopoly and on the adjacent grounds, this camp grew gradually into a complex comprising the whole suburb Zasole and 10 more villages situated between the river Wisla-Vistula and the village Sola (PWCB)

In the autumn of 1941, the construction of an extermination camp, was started in the moor of Brzezinka - Birkenau.

On 10.7.42, the establishment of a women's section in Auschwitz was announced.

On 6.11.43 an order was issued by the RSHA by which all Jewish prisoners in the CC's in Germany had to be transferred to Auschwitz and the "Kriegsgefangenenlager Lublin" (Photocopies of the Gestapo acts in Duesseldorf).

Auschwitz I	- Stammlager in Oswiecim - Auschwitz
Auschwitz II	- in Brzezinka - Birkenau and
Auschwitz III	- Aussenlager, i.e. the administrative unit for the work details. (PWCB)

On 25.11.44. Birkenau was again united with the "Stammlager" and the Kdo. in Monowitz became Auschwitz-III.

About 400000 prisoners were registered during the existence of the CC; the prisoners who went to the extermination camp were not registered and are not comprised in this number; the main camp was liberated on 27.1.45

The registered prisoners had to work either in the Auschwitz complex or they were distributed over the so called "Aussenkommando's" - work details (PABB), and Auschwitz supplied the manpower of slave labour to the industry lying in the territory covering the part of the former Sudetengau East of Friedland, the part of the former Oberschlesien South of the line Neustadt i.O. - Blechhammer, and the part of Poland lying South of the line Stara Kuznica - Trzebinia/Krak.

cont'd..

Kdo's of CC Auschwitz were :

Auschwitz - Oswiecim I
Auschwitz II - Birkenau - Brzezinka
Auschwitz III - Monowice - Bunawerke
Babice
Bielsko - Bielitz
Blachownia - Blochhammer
Bobrek
Budy
Chorzow - Koenigshuette
Chrsanow - Krenau
Czechowice - Dziedzice and Vacuum
Freudenthal - Bruntal CSR (only Judge Jan Sehn)
Gleiwitz - Gliwice I II III IV
Goleszow - Gollerschau
Hajduki I, II - Bismarckhuette
Harmaze - Harmenze
Huta Karolina - Charlottengrube near Czernica (Rybnik)
Huta Ksiazeca - Fuerstengrube (near Myslowice.)
Janina mine - Janinagrube near Chrzanow
Jawiszowice
Jaworzno
Kobior
Lagiewniki Slaskie - Huberturshuette
Lagisza Cmentarna - Lagischagrube
Ledziny - Lawki
Libiaz Maty distr. Chrzanow
Myslowice
Plawy
Prudnik - Neustadt
Rajsko
Rybnik
Rydoltowy
Siemianowice - Leurnhuette
Sosnowice
Stara Kuznica
Stara Wies - Altdorf
Swietochlowice - Eintrachtshuette
Trzbinia
Trzebionka
Wloclawek - Lesslau
Zabrze - Hindenburg
Zywiec - Pless.

DABROWKA WIELKA pow. Tarnowskie Gory Q 51/T 60

Forced labour camp : 300 Jews , March - Sept. 42 (PWCB)

SZOPIENICE - Schoprinits pow. Sosnowiec Q 51/Y 67

CWC : (BNTB)

SOSNOWIEC pow. Sosnowiec Q 51/Y 67

CC Kdo. of Auschwitz, working for the "Orb Maschinenbau GmbH" (US Army
CC Handbook) 600 pris., March 43 - 17.1.45 (PWCB)

BEDZIN pow. Bedzin Q 51/Y 67

Prison : (BNTB)

Forced labour camp : 300 inmates. 28.2.42. - 17.1.45 (PWCB)

LASISZA CEMENTARNA pow. Bedzin Q 51/Y 68

CC Kdo. of Auschwitz, working in the "Grosskraftwerk Walter" (US Army
CC Handbook) in the "Lagische Gruben" (Judge Jan Schn) 3000
pris., 1943 - 11.1.45 (PWCB)

DAROWA GORNICA pow. Bedzin Q 51/Y 77

CWC : 400 workers, Jan. 43 - Febr. 45 (PWCB)

ZARKI pow. Zawiercie -
Forced labour camp , 350 inmates, Sept. 44 - 17.1.45 (PWCB)

MIERZECICE pow. Zawiercie Q 51/Y 69

CWC : 5000 workers, 1942 - 45 (PWCB)

LAZY pow. Zawiercie Q 51/Y 88

Forced labour camp : 420 Jews, 1941 - beginning 44 (PWCB)

LANY WIELKIN pow. Olkusz Q 51/Z 19

CWC : 1500 workers, earthwork, 25.8.44 - 14.1.45 (PWCB)

LANY MALE pow. Olkusz Q 51/Z 19

CWC : 1500 workers, earthwork, 25.8.44 - 14.1.45 (PWCB)

CHRZASTOWICE pow. Olkusz Q 51/Z 07

CWC: 500 workers, earthwork, Aug. 44 - 17.1.45 (PWCB)

MICHALOWKA pow. Olkusz Q 51/Z 07

CWC 8000 workers, earthwork, Aug. 44 - 17.1.45 (PWCB)

MALOSZYCZE pow. Olkusz Q 51/Y 97

CWC 300 workers, earthwork, Aug. 44 - 14.1.45 (PWCB)

ZARNOWIEC pow. Olkusz Q 51/Y 97

CWC's in the synagogue, 350 workers, earthwork, 11.10.44 - 14.1.45
(PWCB) 200 workers, earthwork, 3.9.44 - 14.1.45 (PWCB)

RZEDKOWICE pow. Olkusz Q 51/T 90

CWC 3000 workers, earthwork, 1.7.44 - 28.9.44 (PWCB)

PODLESICE pow. Olkusz Q 51/Z 18

CWC : 2000 workers, earthwork, 15.9.44 - 18.1.45 (PWCB)

ZERKOWICE pow. Olkusz Q 51/Y 99

CWC: 2000 workers, earthwork, 10.8.44 - 18.1.45 (PWCB).

GRODEK pow. Włoszczowa Q 51/U 01

CWC ; 2000 workers, earthwork, 11.8.44 - 14.1.45 (PWCB)

KRASOCIN pow. Włoszczowa Q 51/U 33

CWC, 2000 workers, earthwork, 5.8.44 - 12.1.45 (PTCB)

OLESZNO pow. Włoszczowa Q 51/U 34

CWC: 2000 workers, earthwork, 1.8.44 - 13.1.45 (PTCB)

SZCZĘKOCINE pow. Włoszczowa Q 51/U 11

CWC's: 600 workers, earthwork, 15.8.44 - 15.1.45 (PTCB)

"DTOR" 800 workers, earthwork, 15.8.44 - 15.1.45 (PTCB)

TEGOBORZ pow. Włoszczowa Q 51/W 11

CWC: 4000 workers, earthwork, 28.7.44 - 16.1.45 (PTCB)

WŁOSZCZCZA pow. Włoszczowa Q 51/U 23

Forced labour camp : 200 pris., 1.5.43 - Aug. 44 (PTCB)

CHRZANÓW - Krenau pow. Chrzanow Q 51/Y 85

CC Kdo. of Auschwitz, see Libiaz Maly

Prison ; (BMTB)

TRZEBINIA pow. Chrzanow Q 51/Y 95

CC Kdo. of Auschwitz (Judge Jan Sehn, Pol. Red Cross., BMTB, VVN,
700 Jews forced to work 1942 - 21.1.45 (PTCB)

JANÓRZNO pow. Chrzanow Q 51/Y 76

CC Kdo. of Auschwitz, established Apr. 43 (PTCB) called Kdo. "Neudachs"
after 30.7.43 (Judge Jan Sehn) average strength 4 500 pris.,
liberated on 20.1.45 (PTCB).

CHELMEK pow. Chrzanow Q 51/Y 75

CC Kdo. of Auschwitz, see Libiaz Maly

LIBIAZ MAŁY pow. Chrzanow Q 51/Y 75
The village is situated $4\frac{1}{2}$ miles S of Chrzanow and $3\frac{1}{2}$ miles E of Chelmek; the railway station is half-way between Libiaz and Chelmek. Chrzanow is the next town.

CC Kdo. of Auschwitz, working in the Janinagrube (Judge Jan Sehn), between Chelmek (US Army CC Handbook) and Libiaz Malý; 1000 pris., 1942 - 12.1.45 (PWCB)

PLASZOW pow. Krakow Q 51/Z 24

The disciplinary camp Plaszow, established Dec. 42, 25000 inmates (PWCB) was transformed into a CC without political department on 14.6.44 (Photocopies of the Duesseldorf Gestapo files). Nevertheless, CC inmates may have been transferred to the Plaszow camp before that date. (Trf. list from Mauthausen on 23.3.44) The camp was liberated on 15.1.45 (PWCB).

Kdo's of CC Plaszow were :

Inowrocław - Hohensalza
Krakow
Nielce
Wieliczka
Zakopane

PROKOCIM pow. Krakow Q 51/Z 24

Forced labour camp : 1700 Jews, 1942 - autumn 1943 (PWCB)

MOGILA pow. Krakow Q 51/Z 34

Forced labour camp : 300 Jews, Jan. 44 - 16.1.45 (PWCB)

WIELICZKA pow. Krakow Q 50/Y 59

CC Kdo. of Plaszow (Polish Red Cross.) working for the Heinkel-Tierke (US Army CC Handbook); 6000 Jews were forced to work here from spring - Sept. 44 (PWCB)

MIESKA GORKA - Goerchen pow. Rawicz P 52/C 38

Forced labour camp : 300 inmates, 1.10.41 - 19.1.45 (PWCB)

DUBIN pow. Rawisz P 52/C 57

Forced labour camp : 200 Jews, June 41 - Aug. 43 (PWCB)

PAWLOWO pow. Rawicz P 52/C 58

Forced labour camp : 120 Jews, June 41 - Aug. 43 (PWCB)

DZIECZYNA pow. Gostyn P 52/C 28

Forced labour camp 150 Jews, Apr.-Sept. 43 (PWCB)

KROTOSZYN - Krotoschin pow. Krotoszyn P 52/C 68

Prison : (BNTB)

JANISLAWICE - Johannisdorf pow. Ostrow P 52/C 76

CWC 150 workers, Sept. 41 - 43 (PWCB)

KAIKOWSKIE pow. Ostrow P 52/C 86

CWC 100 workers, March - Oct. 42 (PWCB)

KOCINA - Kotzine pow. Ostrow P 52/C 86

CWC 120 workers, 1941 - 20.3.44 (PWCB)

CZARNYLAS - Schwarzwald pow. Ostrow P 52/C 96

CWC : 100 workers, 1941 - 20.3.44 (PWCB)

SZKLIARKA - Luisenthal pow. Ostrow P 52/C 96

CWC : 130 workers, July 1941 - Nov. 42 (PWCB)

OSTROW pow. Ostrow P 52/C 98

Forced labour camp : 600 inmates , June 43 - March 44 (PWCB)

BINIEW Pow. Ostrow P 52/C 99

CWC : 100 workers, Aug.-Oct. 43 (PWCB)

GRUDZIELEC pow. Ostrow P 52/X 90

Forced labour camp : 100 Jews, Aug. 42 - March 43 (PWGB)

CCC : 100 workers, billeted in the school, May - Aug. 34 (PWGB)

IASZEW pow. Jarocin -

Forced labour camp : 150 inmates. 25.2.42 - May 45 (PWGB)

PLESZEW - Pleschen pow. Jarocin P 52/X 81

Prison : Gerichtsgefängnis (BMTB)

Forced labour camp : 130 inmates, May 44 - Jan. 45 (PWGB)

KALISZ - Kalisch pow. Kalisz P 52/N 94

Prison : Litzmannstädterstr. 2 (BMTB)

STAWISZYN pow. Kalisz P 52/O 05

Forced labour camp, 100 Jews, July 41 - Jan. 42 (PWGB)

BILGORAJ Bilgoraj-Lubelskie -

Resettlement and Transit center - Durchgangs- und Umsiedlungslager -
established Apr. 44, closed Dec. 44, capacity 10000 people.
(PWGB)

HORZYCKI Rybnik-Slasko-Dabrowskie -

Transit and Resettlement center - Durchgangs und Umsiedlungslager,
established 1940, closed 1942, capacity 1200 people (PWGB)

GRUDZIADZ Grudziadz-Bydgoskie -

Transit and resettlement center - Durchgangs and Umsiedlungslager -
established Sept. 39, closed 1942, capacity 5000 people (PWGB)

INOWROCLAW Inowroclaw - Bydgoskie

Transit and resettlement center - Durchgangs und Umsiedlungslager,
established Jan. 40, closed April 44, capacity 800 people (PWGB).

KONSTANEYNOW

Lodz - Lodzkie

Transit and resettlement center - Durchgangs und Umsiedlungslager -
Jan. 40, closed Apr. 44, capacity 800 people (PWCB)

KUTNO

Kutno - Lodzkie

Transit and resettlement center - Durchgangs und Umsiedlungslager
spring 41 - autumn 44, capacity 500 people (PWCB)

PAJECZNO

Radomsko - Lodzkie

Transit and resettlement center - Durchgangs und Umsiedlungslager -
established 1941, closed 1943, capacity 1500 people (PWCB)

POTULICE

~~Bydgoszcz~~ - Bydgoskie

Transit and resettlement center - Durchgangs und Umsiedlungslager -
established Jan. 40, closed 1942, capacity 7000 people (PWCB)

PRUSZKOW

Warszawa - Warszawskie

Transit and resettlement center - Durchgangs und Umsiedlungslager -
established 5.8.44, closed 17.1.45, capacity 50000 people
(PWCB)

PRZEMYSL (koszary)

Przemysl - Rzeszowskie

Transit and resettlement center - Durchgangs und Umsiedlungslager -
established autumn 41, closed spring 44, capacity 5000 people
(PWCB)

PRZEMYSL

Przemysl - Rzeszowskie

ul. Mickiewicza

Transit and resettlement center - Durchgangs und Umsiedlungslager -
established autumn 41, closed spring 44, capacity 1000 people
(PWCB)

SZCZAKOWA

Chrzanow - Krakowskie

Transit and resettlement center - Durchgangs und Umsiedlungslager -
established spring 42, closed Jan. 45, 2000 people (PWCB)

TORUN

Torun - Bydgoskie

Transit and resettlement center - Durchgangs und Umsiedlungslager -
established 29.5.41 - closed 18.7.43, 2500 people (PTCB)

URSUS

Warszawa - Warszawskie

Transit and resettlement center - Durchgangs und Umsiedlungslager -
established Aug. 44, closed 17.10.45, 12000 people.

ZAKROCZYM

Warszawa - Warszawskie

Transit and resettlement center - Durchgangs und Umsiedlungslager -
established 11.8.44, closed 23.10.44, 800 people (PTCB)

ZAMOSZ

Zamosc - Lubelskie

Transit and resettlement center - Durchgangs und Umsiedlungslager -
established Nov. 42, closed autumn 43, 12000 people (PTCB)

ZWIERZYNIEC

Zamosc - Lubelskie

- Transit and resettlement center - Durchgangs - und Umsiedlungslager -
established 1942, closed 1943, 15 000 people (PTCB)

LESZNO - LISSA pow. Leszno P 52/C 09
 CC Kdo. of Gross Rosen (BNFB, VVN, AEF)
 CTC : 300 workers, March 41 - Aug. 43 (PTCB)

HENRYKOWO pow. Leszno -
 CTC : 500 workers, April 42 - 5.2.45 (PTCB)

PAWLOWICZ - PAWLOWITZ pow. Leszno P 52/C 19
 CTC : 1000 workers, July 44 - Jan. 45 (PTCB)

RYDEJNA - REISAN pow. Leszno P 52/C 19
 Forced Labour camp : 110 Jews, June 41 - autumn 43 (PTCB)

OSIECZKA - STORCHNEST pow. Leszno P 52/X 10
 Forced labour camp : 300 inmates, July 41 - 21.1.45 (PTCB)

ROBCLYSKO pow. Leszno P 52/C 29
 CTC : 150 workers, 1941 - Aug. 44 (PTCB)

BOJANOWO pow. Rawicz P 52/C 28
 CTC : 400 workers, 1939 - 45 (PTCB)

NADSTAWY pow. Rawicz -
 Forced labour camp : 100 Jews, July 41 - Aug.43 (PTCB)

LAKTA pow. Rawicz -
 Forced labour camp : 100 Jews, Sept. 41 - Aug.43 (PTCB)

RAWICZ - RAWITSCH pow. Rawicz P 52/C 37
 Forced labour camps: Stammlager - Zuchthaus Rawitsch (personal file
 of former inmate), 3000 inmates, Sept. 39 - 10.1.45
 (PTCB)
 "Columbia", 100 Jews, Apr. - 29.8.43 (PTCB)

KRAKOW Q 51/Z 24
 CC Kdo. of plaszow (Polish Red Cross) working with the "Neumarkter
 Torfverwertung GmbH" (US Army CC Handbook).

Prison: (BNFB)

Forced Labour camp: Krakow-Podgorze, 400 inmates, 15.4.42 - July 44
 (PTCB)

CTC: Fort Andrea (BNFB)

