

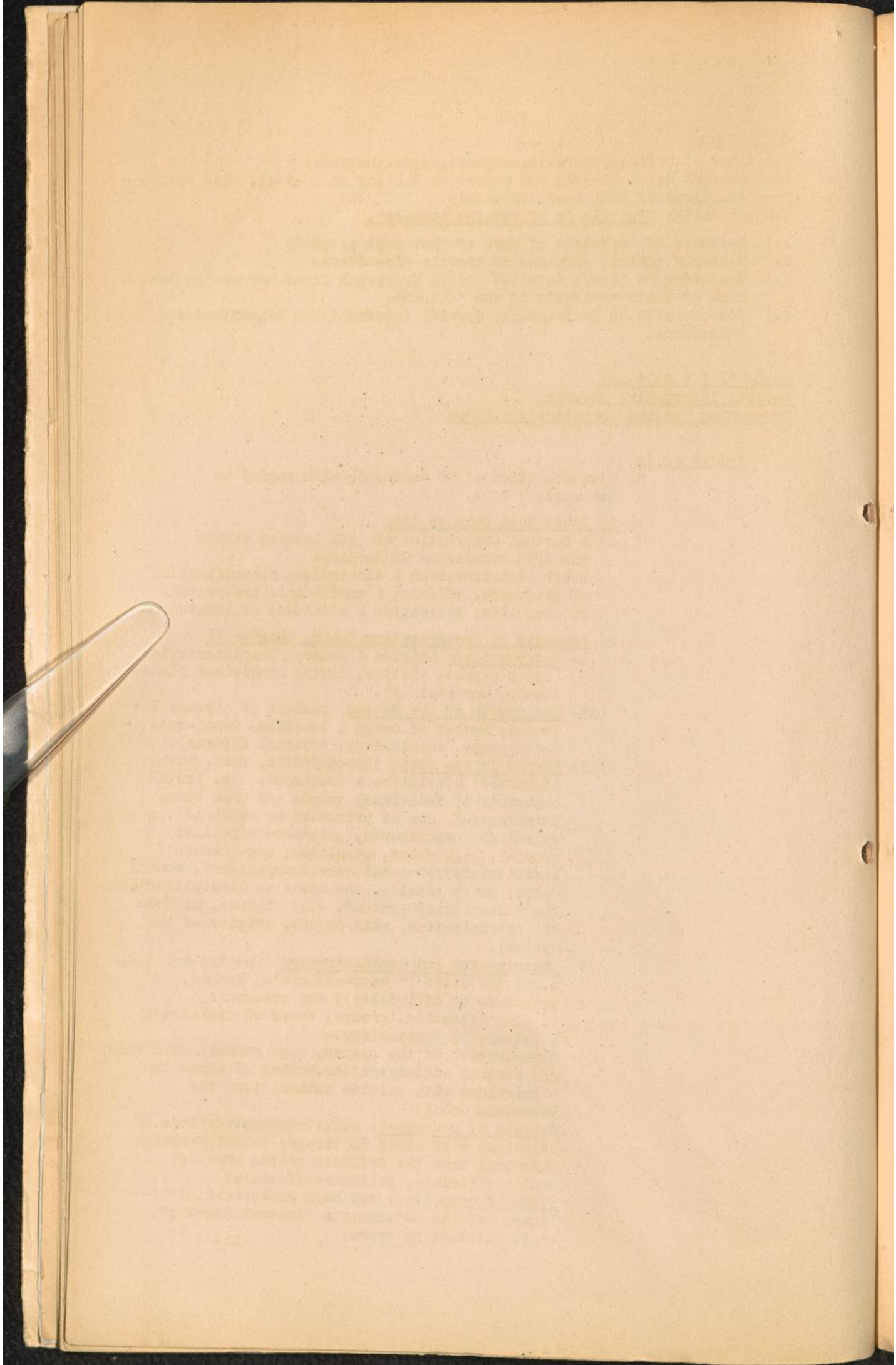
(Meetings of Reichssicherheitshauptamt, continuation:)
Announcement dated 22-9-43 and report re Meeting on 30-9-43, when different functions of RSHA were discussed.
Subject matter "Putting in of foreign workers".

- 1.) Measures if contracts of work are not kept properly
- 2.) Measures against them due to hostile air-attacks
- 3.) Questions re French deputies chosen by French firms who are to take care of their nationals in the " Reich".
- 4.) Some details re Eastworkers. Special treatment for Roumanians and Bulgarians.

Group VI (5 Folders)
General Informative Material
Concerning Various Concentration Camps

Folder No 1:

- a) Classification of CC documents with regard to documentary work.
- b) 1) Basic Hand Book of CCs.
 - 1) A factual description of CCs located within the 1937 boundaries of Germany:
Their administration & discipline; classification of prisoners, official & unofficial, the routine of camp life, activities & attitudes of inmates.
 - 2) Appendix to Concentration Camps, Chapter VI
 - I- Introductory: Origins & General Characteristics (legal aspect, victims, living conditions, illness, deaths, uncertainty).
 - II- The Growth of the System (numbers of persons affected, number of camps & location, death-rate, death-camps, conclusions, official figures).
 - III- Regime in the camps (accommodation, food, work, timetable; Discipline & treatment, e.g. brutal behaviour of individual guards and when being interrogated, use of prisoners as material for scientific experiments, prisoner-officials; general, e.g. rules, penalties, non- German administrators, " Arbeitserziehungslager", womens camps, death penalty, the Nazis as disciplinarians; the " death camp system", e.g. victims, methods of extermination, main object, origins of the system).
 - IV- Organization and Administration (The typical camp, e.g.: the staff ((camp-officials, guards, prisoners as officials)); the prisoners ((classification, groups, terms of confinement & release)); terminology.-
Organization of the system, e.g. general structure and central administration. Method of expansion & relations with outside authorities, the Papenburg Group;
Sources of personnel, e.g.: Totenkopfverbände, SD, relations with other SS troupes, Sonderkommandos, personnel from the ordinary prison service, Jewish officials, prisoner-officials;
Types of camp, e.g.: the main gradations, Straf-lager, outside detachments "Aussenkommandos", other outstanding types;



The system outside Germany:

Note: Gestapo and SD.

Appendix I: Distribution of known camps 1943/44

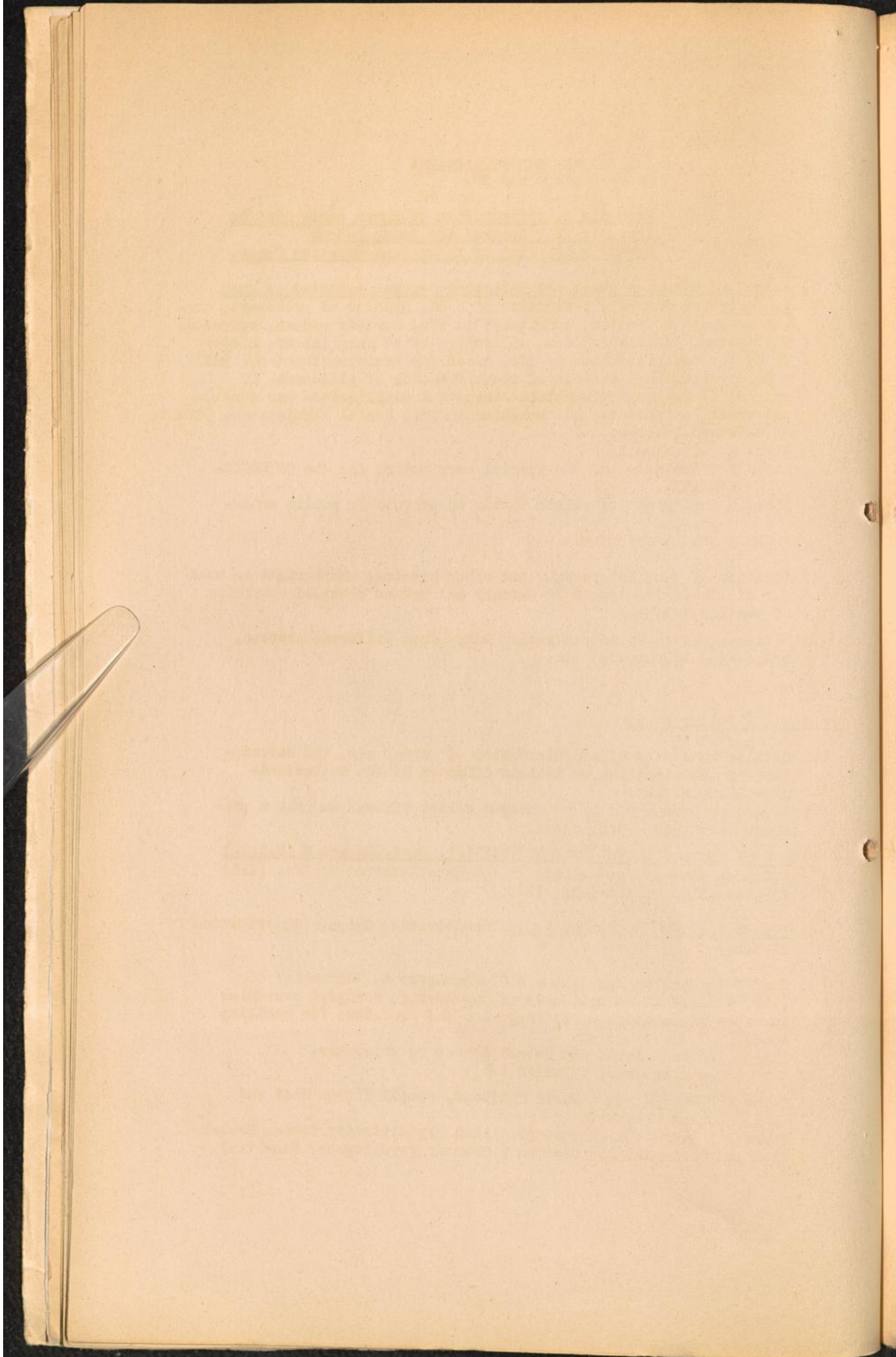
Appendix II." Groups" and Group Badges

Appendix III List of known Concentration Camps.

- 3) Axis Concentration Camps and Detention Centres reported as such in Europe. (General, Definition of a CC, grading of prisoners, number of camps & inmates, commitment to CCs, custody orders, releases, NN inmates, Administrations, allocation of CC camp labour, history of the administration of CCs, order for training inmates, (1941), camp organization, methods of identification of prisoners, CC guards, TV Regiments-functions-strength & auxiliaries- war service, uniforms, Punishments, ARP measures in CCs, Postal Regulations, Effects of deceased inmates.
ANNEX A (is missing)
ANNEX B Translation of the special camp orders for the CC ESTER-
WEGEN.
ANNEX D Employment of prison labour in private or public enterprises.
ANNEX E Schutzhaftbefehle.
- 4) Location of CCs, Laborcamps, and other housing, which might be used for displaced foreigners in Germany and German occupied countries of Western Europe.
- 5) Different lists of Concentration Camps from different sources, POW camps, labourcamps etc..

Group VI. (Folder No 2)

- a) Details re system of administration of German ccs, and description of the situation by Liaison Officers of the Netherlands Mission, e.g. 1-3.
Report on German CCs by an escaped Polish Officer who was a prisoner from 1940- 1944, e.g.4.
- b) WAR CRIMES and CRIMES AGAINST HUMANITY, Part III and V (W.C.C.)
1) Common plan and conspiracy in the establishment of CCs, (III)
2) Persecution of the Jews, (V).
- c) POINTS for INTERROGATIONS No 2. Concentration Camps, (distribution C 22-5-45)
- d) Secret command matter by the " Oberkommando d. Wehrmacht" of 7.12. * 12.12.41 re nationals of the Western occupied countries in cases of sabotage & espionage and the procedure for handling same.
2*3) Notes on " Nacht und Nebel" decree re prisoners.
(See also Group I Folder 1-1).
- e) " The ALLGEMEINE SS" (Basic Handbook, compiled from M14d and MIRS (London Branch).
Source: " Supreme Headquarters Allied Expeditionary Force, Evaluation and Dissemination Section (Counter Intelligence Sub-Div.)."



Group VI. (Folder No 3)

" Ministere des Prisonniers de Guerre, Deportes
et Refugies PARIS":

Synthesis of documentation concerning prisoners
of war, political and racial deportees and foreign
workers.

Group VI. (Folder No 4)

- a) Various categories of prisoners arrested by
RSHA and various tasks of the camp officials.
- b) Food problems on prisoners of a special category
in " A" camp of BREENDONK, joined with the
offer of the Belgian Red Cross of additional
food for the prisoners.

Group VI. (Folder No 5)

- a) Various correspondence re prewar CCs conditions
1934-37, of KL LICHTENBURG-, ESTERWEGEN,
COLUMBIA, SACHSENBURG.
(letter concerning measures taken on returning
emigrants, March 1935).
Further correspondence of KL SACHSENHAUSEN/Ora-
nienburg, DACHAU, Bad SULZA, FUHLBUETTEL, and
Schutzhaftlager HOHENSTEIN.- Prewar decisions
on various subjects of CC administration.
- b) Various " Sturmbannbefehle" by the SS "Toten-
kopfsturmbann " " Sachsen" ". Some other internal
concerns of SS " Totenkopf Sturmbann."

