

K.Z. BUCHENWALD - AUSSENKOMMANDOS.

---000---

C.C. BUCHENWALD - KDOS.

INTERNATIONAL TRACING SERVICE
Records Branch
AROLSEN
March 1950

171206

ABTERODA bei Eisenach L 51/H 65

Abkuerzung: An, Ar, Ant.
Deckname : Anton
Arbeit : B.M.W. Bayer. Motoren Werke
Staerke : 230 Frauen
Zeitdauer : 30. Juli 44 - 27. Maerz 45.
Bemerkungen: -

ABTERODA near Eisenach L 51/H 65

Abbreviation: An, Ar, Ant.
Code name : Anton
Kind of work: B.M.W. Bayer. Motoren Werk
Strength : 230 women
Existence : 30. July 44 - 27. March 45
Remarks : -

ALLENDORF bei Marburg L 51/G 94

- 1) = Ad.
- 2) = Nobel
- 3) = Verwertung chemischer Erzeugnisse
- 4) = 1000 Frauen
- 5) = 17. August 44 - 27. Maerz 45
- 6) = evakuiert nach Bergen-Belsen.

ALLENDORF near Marburg L 51/G 94

- 1) = Ad.
- 2) = Nobel
- 3) = Verwertung chemischer Erzeugnisse
- 4) = 1000 women
- 5) = 17. August 44 - 27 March 45
- 6) = evacuated to Bergen-Belsen.

ALTENBURG in Thueringen N 51/K 37

- 1) = Ab, Has A.
- 2) = Hasag
- 3) = Hugo Schneider A.G. Munitions-
werke
- 4) = 2500 Frauen und 200 Maenner
- 5) = 2. August 44 - April 45
- 6) = -

ALTENBURG in Thuringia N 51/K 37

- 1) = Has A, Ab.
- 2) = Hasag
- 3) = Hugo Schneider A.G., ammunition
Factory
- 4) = 2500 women and 200 men
- 5) = 2. August 44 - April 45
- 6) = -

ANNABURG bei Torgau N 52/E 66

- 1) = Ag
- 2) = -
- 3) = Annaburger Geraetebau (Siebel
Flugzeugwerke)
- 4) = 90 Maenner
- 5) = 13. Januar 45
- 6) = -

ANNABURG near Torgau N 52/E 66

- 1) = Ag
- 2) = -
- 3) = Annaburger Geraetebau (Siebel
Flugzeugwerke)
- 4) = 90 men
- 5) = 13. January 45
- 6) = -

ANNEN bei Witten K 52/A 71

- 1) = AGW, AG
- 2) = -
- 3) = Annener Gusstahlwerke
- 4) = 700 Maenner
- 5) = 27. September 44 - April 45
- 6) = -

ANNEN near Witten K 52/A 71

- 1) = AGW, AG
- 2) = -
- 3) = Annener Gusstahlwerke
- 4) = 700 men
- 5) = 27. September 44 - April 45
- 6) = -

AROLSEN bei Kassel L 52/B 80

- 1) = A, Arol.
- 2) = Artur
- 3) = SS-Fuehrerschule
- 4) = 100 Maenner
- 5) = 25. Juni 44 - 29 Maerz 45

AROLSEN near Kassel L 52/B 80

- 1) = A, Arol.
- 2) = Artur
- 3) = SS-Fuehrerschule
- 4) = 100 men
- 5) = 25. June 44 - 29. March 45

ASCHERSLEBEN bei Magdeburg M 52/D 55

- 1) = A1, A 2, Asch.
- 2) = -
- 3) = Junkers-Werke (unter SS Fuehrungs-
stab A 2)
- 4) = 600 Maenner
- 5) = 15. August 44 - 10. April 45
- 6) = -

ASCHERSLEBEN near Magdeburg M 52/D 55

- 1) = A1, A 2, Asch.
- 2) = -
- 3) = Junkers-Werke (under the Fuehrungs-
stab A 2)
- 4) = 600 men
- 5) = 15. August 44 - 10. April 45
- 6) = -

[Faint, illegible text, likely bleed-through from the reverse side of the page]

Bar

Bar

Bar

Bar

Bar

Bar

Bad GODESBERG

Siehe Godesberg.

BAD SALZUNGEN

Siehe Salzungen.

BAUERIGADE 10

- 1) = Brg X, X
- 2) = -
- 3) = Eisenbahnbrigade Offenburg,
Stuttgart, Ansbach, Muenchen
- 4) = 450 Maenner
- 5) = November 44 - Maerz 45
- 6) = -

BENSBERG bei Koeln K 51/F 56

- 1) = Bb, Hh, N. Ben, Na Ben
- 2) = Napola
- 3) = Nationalpolitische Erziehungs-
anstalt
- 4) = 40 Maenner
- 5) = 29. Juni 44 - Maerz 45
- 6) = -

BERGA / ELSTER bei Gera M 51/K 14

- 1) = S, Schw, Schwal 5
- 2) = Schwalbe V
- 3) = Schacht-Tunnel-Arb. und Verlegung
von Eisenbahnschienen
- 4) = 1600 Maenner
- 5) = 13. November 44 - 10. April 45
- 6) = -

BERLSTEDT bei Weimar M 52/J 47

- 1) = B, Bt
- 2) = -
- 3) = Ziegelei, Dest-Deutsche Erd-Stein-
Werke
- 4) = 250 Maenner
- 5) = 17. Dezember 40 - 28. Maerz 45
- 6) = -

BERNBURG bei Magdeburg

Siehe Floemnitz

BILLRODA in Thueringen M 52/J 59

- 1) = Bi, Bill
- 2) = -
- 3) = Schacht Burggraf
- 4) = 500 Maenner
- 5) = 28. Februar 45 - 3. April 45
- 6) = -

Bad GODESBERG

See Godesberg.

BAD SALZUNGEN

See Salzungen.

BAUERIGADE 10

- 1) = Brg X, X
- 2) = -
- 3) = Eisenbahnbrigade Offenburg,
Stuttgart, Ansbach, Munich
- 4) = 450 men
- 5) = November 44 - March 45
- 6) = -

BENSBERG near Koeln K 51/F 56

- 1) = Bb, Hh, N. Ben, Na Ben
- 2) = Napola
- 3) = Nationalpolitische Erziehungs-
anstalt
- 4) = 40 men
- 5) = 29. June 44 - March 45
- 6) = -

BERGA / ELSTER near Gera M 51/K 14

- 1) = S, Schw, Schwal 5
- 2) = Schwalbe V
- 3) = work in shafts and tunnels,
removing of railroad tracks
- 4) = 1600 men
- 5) = 13. November 44 - 10 April 45
- 6) = -

BERLSTEDT near Weimar M 52/J 47

- 1) = B, Bt
- 2) = -
- 3) = brick-yard, Dest-Deutsche
Erd-Stein-Werke
- 4) = 250 men
- 5) = 17. December 40 - 28. March 45
- 6) = -

BERNBURG bei MAGDEBURG

See Floemnitz

BILLRODA / Thuringia

- 1) = Bi, Bill
- 2) = -
- 3) = Schacht Burggraf
- 4) = 500 men
- 5) = 28. February 45 - 3. April 45
- 6) = -

B

B

B

B

B

B

B

C

BLANKENBURG/Harz

M 52/C 95

- 1) = Bg, Blan, Blank, "OT Einsatz-
gruppe Kyffhaeuser"
- 2) = Dora
- 3) = OT Klosterwerke
- 4) = 500 Maenner
- 5) = 25. August 44 - 28. Oktober 44 (Dora)
- 6) = -

BOCHUM in Westfalen

K 52/L 62

- 1) = Bo, Boch
- 1a) = Bo E, Boch E
- 2) = -
- 3) = Eisenhuettenwerk AG
- 3a) = Verein fuer Gusstahlfabrikation
- 4) = 600 Maenner
- 4a) = 1700 Maenner
- 5) = August 44 - April 45
- 5a) = Juni 44 - Maerz 45
- 6) = -

BODUNGEN

Siehe Klein-Bodungen

BOEHLLEN bei Leipzig

N 52/K 29

- 1) = Bl, Boeh
- 2) = Brabag
- 3) = Braunkohlen-Benzin AG
- 4) = 800 Maenner
- 5) = 26. Juli 44 - Januar 45
- 6) = -

BRAUNSBERRA bei Querfurt

Siehe Luetzkendorf

BRAUNSCHWEIG

M 53/X 90

- 1) = -
- 2) = -
- 3) = Junkerschule
- 4) = 20 Maenner
- 5) = September 41 - 7.5.43
- 6) = -

BUTTELSTEDT bei Weimar

M 52/J 58

- 1) = -
- 2) = -
- 3) = Firma Schlosser
- 4) = 30 Maenner
- 5) = 25. April 41 - 27. September 43
- 6) = -

COLDITZ bei Leipzig

N 52/K 59

- 1) = C
- 2) = Colditz, Has C
- 3) = Hasag, Hugo Schneider AG, Munition
- 4) = 700 Maenner
- 5) = Dezember 44 - Maerz 45
- 6) = -

BLANKENBURG/Harz

M 52/C 95

- 1) = Bg, Blan, Blank, "OT Einsatz-
gruppe Kyffhaeuser"
- 2) = Dora
- 3) = OT Klosterwerke
- 4) = 500 men
- 5) = 25. August 44 - 28 Oktober 44
(Dora)
- 6) = -

BOCHUM in Westfalen

K 52/L 62

- 1) = Bo, Boch
- 1a) = Bo E, Boch E
- 2) = -
- 3) = Eisenhuettenwerk AG
- 3a) = Verein fuer Gusstahlfabrikation
- 4) = 600 men
- 4a) = 1700 men
- 5) = August 44 - April 45
- 5a) = June 44 - March 45
- 6) = -

BODUNGEN

See Klein-Bodungen

BOEHLLEN near Leipzig

N 52/K 29

- 1) = Bl, Boeh
- 2) = Brabag
- 3) = Braunkohlen-Benzin AG
- 4) = 800 men
- 5) = 26. July 44 - January 45
- 6) = -

BRAUNSBERRA bei Querfurt

See Luetzkendorf

BRAUNSCHWEIG

M 53/X 90

- 1) = -
- 2) = -
- 3) = Junkerschule
- 4) = 20 men
- 5) = September 41 - 7. May 43
- 6) = -

BUTTELSTEDT near Weimar

M 52/J 58

- 1) = -
- 2) = -
- 3) = firm Schlosser
- 4) = 30 men
- 5) = 25. April 41 - 27. September 43
- 6) = -

COLDITZ near Leipzig

N 52/K 59

- 1) = C
- 2) = Colditz, Has C
- 3) = Hasag, Hugo Schneider AG, ammun.
- 4) = 700 men
- 5) = December 44 - March 45
- 6) = -

[The page contains extremely faint, illegible text, likely bleed-through from the reverse side of the paper. The text is arranged in several columns and appears to be a list or index of some kind.]

I

I

D

D

DC

DU

DU

DERNAU / AHR bei Bonn

K 51/F 41

- 1) = Rs, Reb
- 2) = Rebstock-Koblenz
- 3) = Firma Golnow & Sohn, Koblenz
- 4) = 200 Maenner
- 5) = Juli 44 - Dezember 44
- 6) = -

DERNAU / AHR near Bonn

K 51/F 41

- 1) = Rs, Reb
- 2) = Rebstock-Koblenz
- 3) = firm Golnow & Sohn, Koblenz
- 4) = 200 men
- 5) = July 44 - Dezember 44
- 6) = -

DESSAU

M 52/E 17

- 1) = D, Des
- 2) = -
- 3) = Junkerswerke 3a)Waggonfabrik
- 4) = 50 Maenner 4a)350 Maenner
- 5) = 25.7.44-Nov.44 5a) 27.10.44 -
10. April 45
- 6) = -

DESSAU

M 52/E 17

- 1) = D, Des
- 2) = -
- 3) = Junkerswerke 3a)Waggonfabrik
- 4) = 50 men 4a)350 men
- 5) = 25. July 44 - November 44
- 5a) = 27. October 44 - 10 April 45
- 6) = -

DORNDURG

- 1) = -
- 2) = "Stein"
- 3) = -
- 4) = 600 Maenner
- 5) = Maerz - April 45
- 6) = -

DORNDURG

- 1) = -
- 2) = "Stein"
- 3) = -
- 4) = 600 men
- 5) = March - April 45
- 6) = -

DORA/HARZ im Bezirk Nordhausen-
Halberstadt

M 52/D 12

- 1) = Do, Sü, Da, Süd, St
- 2) = Dora, Mittelbau, Mibau
- 3) = V 1 und V 2 Herstellung,
unterirdische Arbeit
- 4) = 12000 bis 40000 Maenner
- 5) = Aussenkommando bis 30.10.44,
dann selbstaendiges K.L.
- 6) = -

DORA/HARZ district Nordhausen-
Halberstadt

M 52/D 12

- 1) = Do, Sü, Da, Süd, St
- 2) = Dora, Mittelbau, Mibau
- 3) = producing of V 1 and V 2,
subterranean work
- 4) = from 12000 to 40000 men
- 5) = Aussenkommando until 30.10.44,
then independent CC.
- 6) = -

DORTMUND / Westfalen

K 52/A 72

- 1) = D
- 2) = -
- 3) = Hoerder Huettenver. Geschossfabrik
- 4) = 650 Frauen
- 5) = 2. Oktober 44 - Ende Maerz 45
- 6) = Evakuiert nach Bergen-Belsen

DORTMUND / Westfalen

K 52/A 72

- 1) = D
- 2) = -
- 3) = Hoerder Huettenver. Geschossfabr.
- 4) = 650 women
- 5) = 2. October 44 -end of March 45
- 6) = evacuated to Bergen-Belsen

DUDERSTADT bei Northeim

L 52/C 72

- 1) = -
- 2) = -
- 3) = Polte-Werke
- 4) = 750 Frauen
- 5) = November 44 - 18. Maerz 45
- 6) = -

DUDERSTADT near Northeim

L 52/C 72

- 1) = -
- 2) = -
- 3) = Polte-Werke
- 4) = 750 women
- 5) = November 44 - 18. March 45
- 6) = -

DUISBURG / Nordrhein-Westfalen K 52/A 31

- 1) = Du, Dg
- 2) = -
- 3) = SS Baubrigade 3
- 4) = im Durchschnitt 1000 Maenner
- 5) = 12.2.42 - 28. Oktober 44 (Dora)
- 6) = -

DUISBURG / Nordrhein-Westfalen K 52/A 36

- 1) = Du, Dg
- 2) = -
- 3) = SS Baubrigade 3
- 4) = average 1000 men
- 5) = 12. February 42 - 28. Oktober 44
(Dora)
- 6) = -

DUESSELDORF / Nordrhein-Westfalen
K 52/F 39

- 1) = Ds, D'dorf, Dd
- 1a) = Bs, Bor
- 2) = Borsig
- 3) = Borsig-Rheinmetall AG,
Duesseldorf-Grafenberg
- 4) = 270 Maenner
- 5) = 29. Oktober 44 bis Januar 45
- 6) = -

- 1b) = Be
- 2) = Berta
- 3) = Berta-Rheinmetall Borsig,
Duesseldorf-Derendorf
- 4) = 662 Maenner
- 5) = Juni 44 - Januar 45
- 6) = -

- 1c) = Ds
- 2) = DEST
- 3) = Deutsche Erd-Steinwerke, Duesseldf.,
Kirchfeldstrasse
- 4) = 150 Maenner
- 5) = Juni 44 - Januar 45
- 6) = -

- 1d) = KK, Kk, Kalk
- 2) = Kalkum
- 3) = Bombersucher Sprengkommando
(Baubrigade 3)
- 4) = 170 Maenner
- 5) = Aussenkommando von DEST
11. Juli 44 - 10. April 45
- 6) = Subkdo. von CC Kdo. Bu. Dest

DUESSELDORF / Nordrhein-Westfalen
K 52/F 39

- 1) = Ds, D'dorf, Dd
- 1a) = Bs, Bor
- 2) = Borsig
- 3) = Borsig-Rheinmetall AG
Duesseldorf-Grafenberg
- 4) = 270 men
- 5) = 29. October 44 - January 45
- 6) = -

- 1b) = Be
- 2) = Berta
- 3) = Berta-Rheinmetall Borsig,
Duesseldorf-Derendorf
- 4) = 662 men
- 5) = June 44 - January 45
- 6) = -

- 1c) = Ds
- 2) = DEST
- 3) = Deutsche Erd-Steinwerke, Duesseldorf,
Kirchfeldstrasse
- 4) = 150 men
- 5) = June 44 - January 45
- 6) = -

- 1d) = KK, Kk, Kalk
- 2) = Kalkum
- 3) = Bombersucher Sprengkommando
(Baubrigade 3)
- 4) = 170 men
- 5) = Aussenkommando von DEST
11. July 44 - 10. April 45
- 6) = Subkdo. of CC Kdo. Bu. Dest

EISENACH in THUERINGEN L 51/H 76

- 1) = Em
- 2) = Emma
- 3) = B.M.W. Bayer. Motorenwerke,
Eisenach, Duererhof
- 4) = 423 Maenner
- 5) = 29. September 44 - Februar 45
- 6) = -

EISENACH in THuringia L 51/H 76

- 1) = Em
- 2) = Emma
- 3) = B.M.W. Bayer. Motorenwerke,
Eisenach, Duererhof
- 4) = 423 men
- 5) = 29. September 44 - February 45
- 6) = -

ELLRICH / Harz M 52/D 03

- 1) = EL, B 12
- 2) = Dora
- 3) = Baubrigade 4
- 4) = 1400 Maenner
- 5) = August 43 - 28. Oktober 44 (Dora)
- 6) = -

ELLRICH / Harz M 52/D 03

- 1) = EL, B 12
- 2) = Dora
- 3) = Baubrigade 4
- 4) = 1400 men
- 5) = August 43 - 28. October 44 (Dora)
- 6) = -

ELSNIG / Torgau N 52/E 54

- 1) = E
- 2) = Wasag
- 3) = Westf.-Anhalt. Sprengstoff AG
- 4) = 750 Frauen
- 5) = 16. Oktober 44 - 16. Muerz 45
- 6) = -

ELSNIG / Torgau N 52/E 54

- 1) = E
- 2) = Wasag
- 3) = Westf.-Anh. Sprengstoff AG
- 4) = 750 women
- 5) = 16. October 44 - 16 March 45
- 6) = -

ESCHERSHAUSEN bei Holzminden
L 52/C 27

- 1) = Ht
- 2) = Hecht
- 3) = O.T.Bauleitung, Bau einer unterirdischen Flugzeugfabrik
- 4) = 500 Maenner
- 5) = 15. September 44 - Maerz 45
- 6) = -

ESCHERSHAUSEN near Holzminden.
L 52/C 27

- 1) = Ht
- 2) = Hecht
- 3) = O.T.Bauleitung, construction of a subterranean air-craft-factory
- 4) = 500 men
- 5) = 15. September 44 - March 45
- 6) = -

ESSEN / Nordrhein-Westfalen K 52/A 41

- 1) = Es, ES, Ess
- 2) = Krupp
- 3) = Krupp Gusstahlwerke
- 4) = 520 Frauen
- 5) = 28. August 44 - Ende Maerz 45
- 6) = Evakuiert nach Bergen-Belsen
- 2a) = DEST
- 3a) = Deutsche Erd-u. Stein-Werke
- 4a) = 100 Maenner
- 5a) = 13. Dezember 43 - 21. Januar 45

ESSEN / Nordrhein-Westfalen K 52/A 41

- 1) = Es, ES, Ess
- 2) = Krupp
- 3) = Krupp Gusstahlwerke
- 4) = 520 women
- 5) = 28. August 44 - end of March 45
- 6) = evacuated to Bergen-Belsen
- 2a) = DEST
- 3a) = Deutsche Erd-u. Stein-Werke
- 4a) = 100 men
- 5a) = 13. December 43 - 21. January 45

FLOESSBERG bei Leipzig

N 52/K 39

- 1) = F, Flöss, Floessbg
- 2) = -
- 3) = Floessberg. Metallwerke
- 4) = 1200 Maenner
- 5) = 28. Dezember 44 - April 45
- 6) = -

FLOESSBERG near Leipzig

N 52/K 39

- 1) = F, Flöss, Floessbg
- 2) = -
- 3) = Floessberg. Metallwerke
- 4) = 1200 men
- 5) = 28. December 44 - 10. April 45
- 6) = -

GANDERSHEIM bei Einbeck

L 52/C 56

- 1) = Gh, Gand.
- 2) = -
- 3) = Bruns-Apparatebau (Heinkel Werke)
- 4) = 538 Maenner
- 5) = 5. Oktober 44 - 10 April 45
- 6) = -

GANDERSHEIM near Einbeck

L 52/C 56

- 1) = Gh, Gand.
- 2) = -
- 3) = Bruns-Apparatebau (Heinkel Werke)
- 4) = 538 men
- 5) = 5. October 44 - 10. April 45
- 6) = -

GELSENKIRCHEN / Westfalen

K 52/A 41

- 1) = Gk
- 2) = -
- 3) = Gelsenberg-Benzin AG
- 4) = 2000 Frauen
- 5) = 6. Juli 44 - 20. 9. 44
- 6) = ueberstellt nach Rheinmetall-Borsig, Soemmerda/Thueringen

GELSENKIRCHEN / Westfalen

K 52/A 41

- 1) = GK
- 2) = -
- 3) = Gelsenberg-Benzin AG
- 4) = 2000 women
- 5) = 6. July 44 - 20. September 44
- 6) = transferred to Rheinmetall-Borsig, Soemmerda/Thuringia

GIESSEN bei Frankfurt

L 51/G 62

- 1) = G
- 2) = "Gerta"
- 3) = Sanitaets-Ersatz u. Ausbildungs-abteil.
- 4) = 77 Maenner
- 5) = 29. Oktober 44
- 6) = -

GIESSEN near Frankfurt

L 51/G 62

- 1) = G.
- 2) = "Gerta"
- 3) = Sanitaets-Ersatz-u. Ausbildungs-abteil.
- 4) = 77 men
- 5) = 29. October 44
- 6) = -

[The page contains extremely faint, illegible text, likely bleed-through from the reverse side of the paper. The text is arranged in several columns and appears to be a list or index of some kind.]

GLE

GCE

GCF

GCH

GCI

GLA

GLEINA bei Troegnitz-Remsdorf-Zeitz
M 52/K 18

- 1) = Br, Wl, Trbg.
- 2) = Wille, Brabag
- 3) = Braunkohlen-Benzin AG,
Werk Zeitz
- 4) = 4300 Maenner
- 5) = 6. Juni 44 - 10. April 45
- 6) = -

GLEINA near Troegnitz-Remsdorf-Zeitz
M 52/K 18

- 1) = Br, Wl, Trbg.
- 2) = Wille, Brabag
- 3) = Braunkohlen-Benzin AG,
Werk Zeitz
- 4) = 4300 men
- 5) = 6. June 44 - 10. April 45
- 6) = -

GODESBERG bei Bonn K 51/F 53

- 1) = Gd.
- 2) = -
- 3) = Hotel Dreesen, Winzerstube
- 4) = 1 Mann
- 5) = April 44 -
- 6) = -

GODESBERG near Bonn K 51/F 53

- 1) = Gd.
- 2) = -
- 3) = Hotel Dreesen, Winzerstube
- 4) = 1 man
- 5) = April 44
- 6) = -

GOSLAR / Harz M 52/O 87

- 1) = Gsl, Gosl.
- 2) = -
- 3) = SS-Bauleitung Fliegerhorst
- 4) = 80 Maenner
- 5) = 18. November 40 - 8. November 41
- 6) = -

GOSLAR / Harz M 52/O 87

- 1) = Gsl, Gosl.
- 2) = -
- 3) = SS-Bauleitung Fliegerhorst
- 4) = 80 men
- 5) = 18. November 40 - 8. November 41
- 6) = -

GOETTINGEN L 52/V 52

- 1) = Gg, Gbt.
- 2) = -
- 3) = SS-Kavallerie Schule
- 4) = 17 Maenner
- 5) = Februar 45 - April 45
- 6) = -

GOETTINGEN L 52/V 52

- 1) = Gg, Gbt
- 2) = -
- 3) = SS-Kavallerie Schule
- 4) = 17 men
- 5) = February 45 - April 45
- 6) = -

GUENZERODE bei Nordhausen M 52/D 02

- 1) = -
- 2) = Dora
- 3) = Baubrigade 4
- 4) = -
- 5) = 28. Oktober 44 (Dora)
- 6) = -

GUENZERODE near Nordhausen M 52/D 02

- 1) = -
- 2) = Dora
- 3) = Baubrigade 4
- 4) = -
- 5) = 28. October 44 (Dora)
- 6) = -

HARDMERSLEBEN bei Oschersleben
M 53/D 48

- 1) = A 4, Hs.
 - 2) = Hans
 - 3) = Ing. Schlempp, Siebenberg Fabrik
 - 4) = 1400 Maenner
 - 5) = Juni 44 - Maerz 45
 - 6) = -
- 2a) = Ago
3a) = Ago Flugzeugwerke
Beide unter SS Fuehrungsstab A 4.

HARDMERSLEBEN near Oschersleben
M 53/D 48

- 1) = A 4, Hs.
 - 2) = Hans
 - 3) = Ing. Schlempp, Siebenberg Fabrik
 - 4) = 1400 men
 - 5) = June 44 - March 45
 - 6) = -
- 2a) = Ago
3a) = Ago Flugzeugwerke
Both under SS Fuehrungsstab A 4.

1870

1871

1872

1873

1874

1875

1876

1877

- 1) = B 2, Mal, Mal AG, B II, Hb
- 2) = ~~Mal~~, Malachyt
- 3) = Unterirdische Konstruktion
- 4) = 5400 Maenner
- 5) = April 44 - Maerz 45
- 6) = -

- 1a) = Mfs, Mai, Maif.
- 2a) = ~~Mal~~, Maifisch
- 3a) = O.T. Bauleitung Langenstein
- 4a) = 200 Maenner
- 5a) = Oktober 44 - April 45
- 6a) = -

- 1) = B 2, Mal, Mal AG, B II, Hb
- 2) = ~~Mal~~, Malachyt
- 3) = underground construction
- 4) = 5400 men
- 5) = April 44 - March 45
- 6) = -

- 1a) = Mfs, Mai, Maif.
- 2a) = ~~Mal~~, Maifisch
- 3a) = O.T. Bauleitung Langenstein
- 4a) = 200 men
- 5a) = October 44 - April 45
- 6a) = -

HALI

1) ...
2) ...
3) ...
4) ...
5) ...
6) ...

1) ...
2) ...
3) ...
4) ...
5) ...
6) ...

HALI

1)
2)
3)
4)
5)
6)

HALI

1)
2)
3)
4)
5)
6)

HARZ

1)
2)
3)
4)
5)
6)

HERZ

S:

HES

1)
2)
3)
4)
5)
6)

HOH

K:

EN

1)
2)
3)
4)
5)
6)

ASS

1)
2)
3)
4)
5)
6)

HALBERSTADT - Harz

M 25/D 27

- 1) = Hb, Halb., Jh, Ju-Halberstadt
- 2) = Juha
- 3) = Junkerswerke AG
- 4) = 900 Maenner
- 5) = August 44 - Februar 45
- 6) = -

HALBERSTADT - Harz

M 52/D 27

- 1) = Hb, Halb., Jh, Ju-Halberstadt
- 2) = Juha
- 3) = Junkerswerke AG
- 4) = 900 men
- 5) = August 44 - February 45
- 6) = -

HALLE a.d.Saale

M 52/D 92

- 1) = Ha
- 2) = Siebel
- 3) = Siebel Flugzeugwerk GmbH,
Boelokestr.70
- 4) = 1000 Maenner
- 5) = 2. August 44 - 28. Februar 45
- 6) = -

HALLE a.d.Saale

M 52/D 92

- 1) = Ha
- 2) = Siebel
- 3) = Siebel Flugzeugwerk GmbH,
Boelokestr.70
- 4) = 1000 men
- 5) = 2. August 44 - 28. February 45
- 6) = -

HARZUNGEN bei Nordhausen

M 52/D 13

- 1) = Ah, B 3, B III, Anhy, Anhyt
- 2) = Anhydrit, Anna, Anne, Anyt
- 3) = Wifo-Wirtschaft-Forschungsgesellschaft fuer Fuehrungsstab B 3
- 4) = 2000 Maenner
- 5) = 1. April 44 - 28. Oktober 44 (Dora)
- 6) = -

HARZUNGEN near Nordhausen

M 52/D 13

- 1) = Ah, B 3, B III, Anhy, Anhyt.
- 2) = Anhydrit, Anna, Anne, Anyt
- 3) = Wifo-Wirtschaft-Forschungsgesellschaft fuer Fuehrungsstab B 3
- 4) = 2000 men
- 5) = 1. April 44 - 28. October 44 (Dora)
- 6) = -

HERZBERG / Elster

Siehe Schlieben

HERZBERG / Elster

See Schlieben

HESSISCH-LICHTENAU

L 52/H 39

- 1) = HL
- 2) = -
- 3) = G.m.b.H. zur Verwertung chemischer Erzeugnisse
- 4) = 800 Frauen (ungarische Juedinnen)
- 5) = 13. August 44 - 22. Maerz 45
- 6) = -

HESSISCH-LICHTENAU

L 52/H 39

- 1) = HL
- 2) = -
- 3) = G.m.b.H. zur Verwertung chemischer Erzeugnisse
- 4) = 800 women (hungarian jewesses)
- 5) = 13. August 44 - 22. March 45
- 6) = -

HOHLSTEDT / Harz

Kommando Dora.

HOHLSTEDT / Harz

Kommando Dora.

JENA / Thueringen

M 51/J 66

- 1) = Je.
- 2) = -
- 3) = RAW - Reichsbahnausbesserungswerk
- 4) = 800 Maenner
- 5) = 4. Oktober 44 - 10. April 45
- 6) = -

JENA / Thuringia

M 51/J 66

- 1) = Je.
- 2) = -
- 3) = RAW - Reichsbahnausbesserungswerk
- 4) = 800 men
- 5) = 4. October 44 - 10. April 45
- 6) = -

KASSEL / Hessen

L 52/C 20

- 1) = K, Ka, Kas, Kass.
- 2) = -
- 3) = O.T. Bauleitung, Erd - u. Bunkerarbeiten
- 4) = 170 Maenner
- 5) = Dezember 42 - Maerz 45
- 6) = Zurueck nach Buchenwald

KASSEL / Hessen

L 52/C 20

- 1) = K, Ka, Kas, Kass.
- 2) = -
- 3) = O.T. Bauleitung, earth and air-raid-shelter work
- 4) = 170 men
- 5) = December 42 - March 45
- 6) = Back to Buchenwald

[Faint, mirrored text from the reverse side of the page, appearing as bleed-through. The text is largely illegible due to its orientation and fading.]

TABLE
Kc
LET
1)
2)
3)
4)
5)
6)
Kc
OBL
Si
OEL
1)
2)
3)
4)
5)
6)
1a
2a
3a
4a
5a
6a
3b
4b
5b
1a
2a
3a
5a
ANE
1)
2)
3)
4)
5)
6)
NGE
1)
2)
3)
4)
5)
6)

KELBRA / Harz

Kommando Dora

KIEL

L 55/C 53

- 1) = -
- 2) = "Anschütz"
- 3) = Firma Anschütz & Co., Herstellung von optischen Instrumenten
- 4) = 25 Maenner
- 5) = Oktober 44 - November 44
- 6) = -

LEIN - BODUNGEN / Harz

Kommando Dora

OBLENZ

Siehe Dernau

DELN

K 51/F 45

- 1) = Kb, I, KW, Deutz
- 2) = -
- 3) = Koeln-Deutz Waggonfabrik
- 4) = 200 Maenner
- 5) = 22. September 44 - Ende Febr. 45
- 6) = -

- 1a) = III, Kb-F
- 2a) = -
- 3a) = Koeln-Niehl Fordwerke
- 4a) = 50 Maenner
- 5a) = 13. August 44 - Januar 45
- 6a) = -

- 3b) = Aufräumungskommando Hansestadt
Koeln
- 4b) = 500 Maenner
- 5b) = verbunden mit Baubrigade 3.

- 1c) = I, III, V, K 5, KW 5, B B 5
- 2c) = Baubr. I, III, V, Baubr. V
- 3c) = Baubrigade 1, 3, 5
- 5c) = Februar 42 - April 44

KRANICHFELD / Thueringen

L 52/B 63

- 1) = Kr, Krf
- 2) = -
- 3) = Pflege der deutschen Kunst-
denkmaeler
- 4) = 70 Maenner
- 5) = 1942-1943
- 6) = -

LANGENSALZA / Thueringen

M 52/J 08

- 1) = Ls, Lange
- 2) = -
- 3) = Junkerswerke, oder Langenwerke,
Langensalza
- 4) = 1300 Maenner
- 5) = 21. Oktober 44 - April 45
- 6) = Fluchtpunkthaeflinge, von allen KZ-L.

KELBRA / Harz

Kommando Dora

KIEL

L 55/C 53

- 1) = -
- 2) = "Anschütz"
- 3) = firm Anschuetz & Co., manufacturing of optical instruments
- 4) = 25 men
- 5) = October 44 - November 44
- 6) = -

KLEIN-BODUNGEN / Harz

Kommando Dora

KOELN

See Dernau

KOELN

K 51/F 45

- 1) = Kb, I, KW, Deutz
- 2) = -
- 3) = Koeln-Deutz Waggonfabrik
- 4) = 200 men
- 5) = 22. September 44 - end of Febr. 45
- 6) = -

- 1a) = III, Kb-F
- 2a) = -
- 3a) = Koeln-Niehl Fordwerke
- 4a) = 50 men
- 5a) = 13. August 44 - January 45
- 6a) = -

- 3b) = Aufräumungskommando Hansestadt
Koeln
- 4b) = 500 men
- 5b) = in connection with Baubrigade 3

- 1c) = I, III, V, K 5, KW 5, B B 5
- 2c) = Baubr. I, III, V, Baubr. V
- 3c) = Baubrigade 1, 3, 5
- 5c) = February 42 - April 44

KRANICHFELD / Thuringia

L 52/B 63

- 1) = Kr, Krf.
- 2) = -
- 3) = restoration of German historical
monuments
- 4) = 70 men
- 5) = 1942-1943
- 6) = -

LANGENSALZA / Thuringia

M 52/J 08

- 1) = Ls, Lango
- 2) = -
- 3) = Junkerswerke, or Langenwerke,
Langensalza
- 4) = 1300 men
- 5) = 21. October 44 - April 45
- 6) = Fluchtpunkthaeflinge of all CC's.

LANGENSTEIN bei Halberstadt

Siehe Halberstadt-Langenstein

LANGENSTEIN near Halberstadt

See Halberstadt Langenstein

LEAU

Siehe Floemnitz

LEAU

See Floemnitz

LEIPZIG

N 52/E 20

- 1) = L, Has L, Has Lei.
- 2) = Hasag
- 3) = Hugo Schneider AG,
Munitionsfabrik
- 4) = 4600 Frauen und 150 Maenner
- 5) = 9. Juni 44 - Maerz 45
- 6) = -

LEIPZIG

N 52/E 20

- 1) = L, Has L, Has Lei.
- 2) = Hasag
- 3) = Hugo Schneider AG, ammunition
factory
- 4) = 4600 women and 150 men
- 5) = 9. June 44 - March 45
- 6) = -

LEIPZIG - SCHOENAU

M 52/E 10

- 1) = L
- 2) = ATG
- 3) = ATG-Maschinenbau,
Leipzig W 32
- 4) = 300 Frauen
- 5) = 22. August 44 - Maerz 45
- 6) = -

LEIPZIG - SCHOENAU

M 52/E 10

- 1) = L
- 2) = ATG
- 3) = ATG-Maschinenbau, Leipzig W 32
- 4) = 300 women
- 5) = 22. August 44 - March 45
- 6) = -

LEIPZIG - THEKLA

N 52/E 21

- 1) = L, E, Lei, Erla KL (im
Arbeitseinsatzbuch)
- 2) = Emil
- 3) = Erla-Werke (Mansfeld)
- 4) = 1400 Maenner
- 5) = 27. September 44 - 10.4.45
- 6) = -

LEIPZIG - THEKLA

N 52/E 21

- 1) = L, E, Lei, Erla KL (im Arbeits-
einsatzbuch)
- 2) = Emil
- 3) = Erla-Werke (Mansfeld)
- 4) = 1400 women
- 5) = 27. September 44 - 10. April 45
- 6) = -

LEOPOLDSHALL - (Stassfurt-Bernburg)

M 52/D 66

- 1) = Lh, Leop.
- 2) = -
- 3) = Junkerswerke
- 4) = 150 Maenner
- 5) = Januar 45 - April 45
- 6) = -

LEOPOLDSHALL - (Stassfurt-Bernburg)

M 52/D 66

- 1) = Lh, Leop.
- 2) = -
- 3) = Junkerswerke
- 4) = 150 men
- 5) = January 45 - April 45
- 6) = -

LICHTENAU

Siehe Hessisch-Lichtenau

LICHTENAU

See Hessisch-Lichtenau

LIPPESTADT/ Westfalen

L 52/B 44

- 1) = Ls.
- 2) = -
- 3) = Westf. Metallindustrie AG
- 4) = 330 Frauen
- 5) = Bis Maerz 45
- 6) = -
- 3a) = Eisen-u. Metallwerke
- 4a) = 750 Frauen
- 5a) = 2. August 44 - Maerz 45

LIPPESTADT/ Westfalen

L 52/B 44

- 1) = Ls.
- 2) = -
- 3) = Westf. Metallindustrie AG
- 4) = 330 women
- 5) = until March 45
- 6) = -
- 3a) = Eisen-u. Metallwerke
- 4a) = 750 women
- 5a) = 2. August 44 - March 45

JUE
C
1
2
3
4
5
6

AC
1
2
3
4
5
6

AG
1
2
3
4
5
6

1
2
3
4
5
6

AR
1
2
3
4
5
6

EU
1
2
3
4
5
6

JUE
1
2
3
4
5
6

LUETZKENDORF bei Braunsbebra-

Crumpa M 52/D 80

- 1) = Ld. Lütz.
- 2) = -
- 3) = Oelraffinerie Wintershall AG
- 4) = 900 Maenner
- 5) = 15. Juli 44 - 18. Januar 45
- 6) = -

LUETZKENDORF near Braunsbebra-

Crumpa M 52/D 80

- 1) = Ld. Lütz.
- 2) = -
- 3) = Oelraffinerie Wintershall AG
- 4) = 900 men
- 5) = 15. July 44 - 18. January 45
- 6) = -

MACKENRODE / Harz

M 52/C 93

- 1) = -
- 2) = Dora
- 3) = Baubrigade 3
- 4) = 150 Maenner
- 5) = Juni 44 (Dora)
- 6) = -

MACKENRODE / Harz

M 52/C 93

- 1) = -
- 2) = Dora
- 3) = Baubrigade 3
- 4) = 150 men
- 5) = June 44 (Dora)
- 6) = -

MAGDEBURG

M 53/Y 60

- 1) = Mb.
- 2) = Magda, Magde
- 3) = Brabag-Werke, Braunkohlen-
benzin AG
- 4) = 1920 Maenner
- 5) = 18. Juni 44 - Februar 45
- 6) = -

MAGDEBURG

M 53/Y 60

- 1) = Mb.
- 2) = Magda, Magde
- 3) = Brabag-Werke, Braunkohlen-
benzin AG
- 4) = 1920 men
- 5) = 18. June 44 - February 45
- 6) = -

- 1a) = Mg., Mb Pol
- 2a) = Polte
- 3a) = Polte-Werke
- 4a) = 2900 Frauen und 500 Maenner
im Januar 45
- 5a) = September 44 - Maerz 45

- 1a) = Mg, Mb Pol
- 2a) = Polte
- 3a) = Polte-Werke
- 4a) = 2900 women and 500 men in
January 45
- 5a) = September 44 - March 45

MARKKLEEBERG bei Leipzig N 52/E 20

- 1) = Mb
- 2) = -
- 3) = Junkerswerke, Zweigwerk
Markkleeberg
- 4) = 1600 Frauen
- 5) = 7. September 44 - Maerz 45
- 6) = -

MARKKLEEBERG near Leipzig N 52/E 20

- 1) = Mb.
- 2) = -
- 3) = Junkerswerke, Zweigwerk
Markkleeberg
- 4) = 1600 women
- 5) = 7. September 44 - March 45
- 6) = -

MEUSELWITZ / Thueringen

M 52/K 18

- 1) = Ms - Maenner, Mw - Frauen
- 2) = Hasag
- 3) = Hugo Schneider AG, Munitions-
fabrik
- 4) = 1500 Frauen und 280 Maenner
am 20.1.45
- 5) = 6. Oktober 44 - 10. April 45
- 6) = -

MEUSELWITZ / Thuringia

M 52/K 18

- 1) = Ms - men, Mw - women
- 2) = Hasag
- 3) = Hugo Schneider AG, ammunition
factory
- 4) = 1500 women and 280 men on
20.1.45
- 5) = 6. October 44 - 10. April 45
- 6) = -

MUEHLHAUSEN / Thueringen

M 52/H 89

- 1) = M, Ma, fuer Maenner Julius M.
- 2) = Marta, Martha
- 3) = Flugzeugwerke Geraetebau GmbH,
Muehlenwerke, Muehlhausen
- 4) = 500 Frauen und danach Maenner
- 5) = 4. Mai 44 - Maerz 45
- 6) = -

MUEHLHAUSEN / Thuringia

M 52/H 89

- 1) = M, Ma, for men Julius M.
- 2) = Marta, Martha
- 3) = Flugzeugwerke Geraetebau GmbH,
Muehlenwerke, Muehlhausen
- 4) = 500 women and after that men
- 5) = 4. May 44 - March 45
- 6) = -

NEUS

- 1
- 2
- 3
- 4
- 5
- 6

NEU

- 1
- 2
- 3
- 4
- 5
- 6

NIE

S

NIE

- 1
- 2
- 3
- 4
- 5
- 6

NIE

- 1
- 2
- 3
- 4
- 5
- 6

NCE

- 1
- 2
- 3

L

- 1
- 2
- 3
- 4
- 5
- 6

L

NEU

- 1
- 2
- 3
- 4
- 5
- 6

NEUSTADT / Coburg

M 51/0 49

- 1) = N
- 2) = -
- 3) = Kabel-Leitungswerke AG
(Kalag Neustadt)
- 4) = 400 Frauen
- 5) = 12. September 44 - 6. April 45
- 6) = -

NEUSTADT / Coburg

M 51/0 49

- 1) = N
- 2) = -
- 3) = Kabel-Leitungswerke AG
(Kalag Neustadt)
- 4) = 400 women
- 5) = 12. September 44 - 6. April 45
- 6) = -

NEUSTASSFURT a.d.Saale M 52/D 66

- 1) = Wz, Wäl, Wälz
- 2) = Reh
- 3) = Waelzer, Georg, Schacht-Arbeiten
- 4) = 700 Maenner
- 5) = September 44 - April 45
- 6) = -

NEUSTASSFURT a.d.Saale

M 52/D 66

- 1) = Wz, Wäl, Wälz.
- 2) = Reh
- 3) = Waelzer, Georg, shaft work
- 4) = 700 men
- 5) = September 44 - April 45
- 6) = -

NIEDERHAGEN

Siehe Wewelsburg

NIEDERHAGEN

See Wewelsburg

NIEDERORSCHSEL / Nordhausen M 52/0 81

- 1) = No, Nied.
- 2) = -
- 3) = Junkerswerke - Langenwerke AG
- 4) = 500 Maenner
- 5) = 6. September 44 - April 45
- 6) = -

NIEDERORSCHSEL / Nordhausen M 52/0 81

- 1) = No, Nied.
- 2) = -
- 3) = Junkerswerke - Langenwerke AG
- 4) = 500 men
- 5) = 6. September 44 - April 45
- 6) = -

NIEDERSACHSENWERFEN / Harz 052 / D 13

- 1) = B 11, B XI
- 2) = Dora
- 3) = Ammoniakwerke (Gipswerk),
Merseburg, Kostenstelle B 11
- 4) = 2500 Maenner
- 5) = 12. Mai 44 - Juni 44 (Dora)
- 6) = -

NIEDERSACHSENWERFEN / Harz 052/D 13

- 1) = B 11, B XI
- 2) = Dora
- 3) = Ammoniakwerke (Gipswerk),
Merseburg, Kostenstelle B 11
- 4) = 2500 men
- 5) = 12. May 44 - June 44 (Dora)
- 6) = -

NORDHAUSEN / Harz

M 52/D 12

- 1) = B II, B 2
 - 2) = Dora Mittelbau
 - 3) = Mittelbau ~~W~~, unterirdische
Konstruktion, Lager Boelke
Kaserne, spater Dora 28.10.44
 - 4) = 8500 Maenner
 - 5) = September 44
 - 6) = -
- 3a) = Fliegerhorst
4a) = 300 Maenner
5a) = 8. Juli 44
- 3b) = Maschinenfabrik Schmidt-Kranz
4b) = 100 Maenner
5b) = Mai 44 - September 44 (Dora)

NORDHAUSEN / Harz

M 52/D 12

- 1) = B II, B 2
 - 2) = Dora Mittelbau
 - 3) = Mittelbau ~~W~~, underground
construction, Lager Boelke
Kaserne, later Dora 28.10.44
 - 4) = 8500 men
 - 5) = September 44
 - 6) = -
- 3a) = Fliegerhorst
4a) = 300 men
5a) = 8. July 44
- 3b) = Maschinenfabrik Schmidt-Kranz
4b) = 100 Maenner
5b) = May 44 - September 44 (Dora)

NUEXEI / Harz

- 3) = Baubrigade 3 (Dora)

NUEXEI / Harz

- 3) = Baubrigade 3 (Dora)

DEPT

- 1)
- 2)
- 3)
- 4)
- 5)
- 6)

DEPT

SI.

DEPT

- 1)
- 2)
- 3)
- 4)
- 5)
- 6)

SCH

SI.

STE

- 3)

STE

- 1)
- 2)
- 3)
- 4)
- 5)
- 6)

ENT

- 1)
- 2)
- 3)
- 4)
- 5)
- 6)

LOE

- 1)
- 2)
- 3)

- 4)
- 5)
- 6)

OBERNDORF / Thuringen M 51/K 21

- 1) = Mu
- 2) = Muna
- 3) = Munitionsanstalt, Luftmuna 5/IV
- 4) = 300 Maenner
- 5) = 19. November 44 - Januar 45
- 6) = -

OBERNDORF / Thuringia M 51/K 21

- 1) = Mu
- 2) = Muna
- 3) = ammunition factory, Luftmuna 5/IV
- 4) = 300 men
- 5) = 19. November 44 - January 45
- 6) = -

OERTELSBRUCH

Siehe Saalfeld

OERTELSBRUCH

See Saalfeld

OHRDRUF / Thuringen M 51/J 06

- 1) = S III, S 3, 0, Od.
- 2) = Rupo
- 3) = Bauarbeit
- 4) = 12000 Maenner
- 5) = November 44 - April 45
- 6) = Evakuiert nach Buchenwald

OHRDRUF / Thuringia M 51/J 06

- 1) = S III, S 3, 0, Od.
- 2) = Rupo
- 3) = engineering
- 4) = 12000 men
- 5) = November 44 - April 45
- 6) = evacuated to Buchenwald

SCHERSLEBEN / Harz

Siehe Hadmersleben.

SCHERSLEBEN / Harz

See Hadmersleben.

STERLAGEN / Harz M 52/C 83

- 3) = Baubrigade 3

STERLAGEN / Harz M 52/C 83

- 3) = Baubrigade 3

STERODE / Harz L 52/C 75

- 1) = Or, Ost.
- 2) = -
- 3) = C. Heber, Maschinenfabrik
- 4) = 300 Maenner
- 5) = 28. September 44 - 28. Oktober 44
(Dora)
- 6) = -

STERODE / Harz L 52/C 75

- 1) = Or, Ost.
- 2) = -
- 3) = C. Heber, Maschinenfabrik
- 4) = 300 men
- 5) = 28. September 44 - 28. Oktober 44
(Dora)
- 6) = -

PENIG bei Chemnitz/Sachsen V 51/K 47

- 1) = -
- 2) = -
- 3) = Firma Gehrt
- 4) = 700 Frauen
- 5) = November 44 - Maerz 45
- 6) = -

PENIG near Chemnitz/Saxonia V 51/K 47

- 1) = -
- 2) = -
- 3) = firm Gehrt
- 4) = 700 women
- 5) = November 44 - March 45
- 6) = -

FLOEMNITZ bei Bernburg, Post Leau
M 52/D 85

- 1) = P, Flöm, Flönn.
- 2) = Leopard
- 3) = Schacht Floemnitz, Allg. Solvay-
Werke, Bauvorhaben Leopard,
Unterirdischer Bergbau
- 4) = 1500 Maenner
- 5) = August 44 - April 45
- 6) = -

FLOEMNITZ near Bernburg, Post Leau
M 52/D 85

- 1) = P, Flöm, Flönn.
- 2) = Leopard
- 3) = Schacht Floemnitz, Allg. Solvay-
Werke, Bauvorhaben Leopard
underground mining
- 4) = 1500 Maenner
- 5) = August 44 - April 45
- 6) = -

QU

RA

RE

RO

RO

RO

SA

SA

QUEDLINEBURG

M 52/D 35

- 1) = Q, Qu
- 2) = -
- 3) = Fliegerhorst
- 4) = 45 Maenner
- 5) = 20. April 42 - 8. November 42
- 6) = -

QUEDLINBURG

M 52/D 35

- 1) = Q, Qu
- 2) = -
- 3) = Fliegerhorst
- 4) = 45 men
- 5) = 20. April 42 - 8. November 42
- 6) = -

RAGUHN / Leipzig

M 52/E 15

- 1) = -
- 2) = -
- 3) = Firma Heerbrandt
- 4) = -
- 5) = Februar 45 - Maerz 45
- 6) = -

RAGUHN / Leipzig

M 52/E 15

- 1) = -
- 2) = -
- 3) = firm Heerbrandt
- 4) = -
- 5) = February 45 - March 45
- 6) = -

REMSDORF

Siehe Gleina.

REMSDORF

See Gleina.

ROTHENBURG a.d.Saale M 52/D 74

- 1) = Rb, Mf, Rot.
- 2) = Mansfeld
- 3) = Mansfeld Flugzeugwerke
- 4) = 80 Maenner
- 5) = 25. Oktober 44 - Maerz 45
- 6) = -

ROTHENBURG a.d.Saale

M 52/D 74

- 1) = Rb, Mf, Rot.
- 2) = Mansfeld
- 3) = Mansfeld Flugzeugwerke
- 4) = 80 men
- 5) = 25. Oktober 44 - March 45
- 6) = -

ROTTLEBERODE / Harz M 52/D 22

- 1) = B 4, Hoh, A 5, Tr, Th, Hei
- 2) = Heinrich Thyra, Heinrich T,
Fuehrungsstab A 5
- 3) = Thyrawerke Mansfeld,
Flugzeugwerke (Dora)
- 4) = -
- 5) = -
- 6) = -

ROTTLEBERODE / Harz

M 52/D 22

- 1) = B 4, Hoh, A 5, Tr, Th, Hei
- 2) = Heinrich, Thyra, Heinrich T,
Fuehrungsstab A 5
- 3) = Thyrawerke Mansfeld,
Flugzeugwerke (Dora)
- 4) = -
- 5) = -
- 6) = -

ROSSLA / Harz

Kommando Dora

ROSSLA / Harz

Kommando Dora

SAALFELD a.d.Saale M 51/J 53

- 1) = La, Lr.
- 2) = Laura
- 3) = "Thueringer Werk" Oertelsbruch
Baulitung, "Lager Lehesten",
V 1-Raketenwerk
- 4) = 700 Maenner
- 5) = September 43 - Maerz 45
- 6) = Evakuiert nach Dachau

SAALFELD a.d.Saale

M 51/J 53

- 1) = La, Lr.
- 2) = Laura
- 3) = "Thueringer Werk" Oertelsbruch
Baulitung, "Lager Lehesten",
V 1-Raketenwerk
- 4) = 700 men
- 5) = September 43 - March 45
- 6) = evacuated to Dachau.

SALZA / Harz bei Nordhausen

Siehe Nordhausen

SALZA / Harz near Nordhausen

See Nordhausen.

SAL
1
2
3
4
5
6

SAN
I
SCH

SCI

SCI

SE

SALZUNGEN bei Eisenach L 51/H 74

- 1) = Kh, KhR, Sa, Salz.
- 2) = Renntier, Kalb-Heinrich
- 3) = O.T. Bauleitung, Ludwig Renntier
- 4) = 460 Maenner
- 5) = 10. Januar 45 - April 45
- 6) = Evakuiert nach Buchenwald 6.4.45

SANGERHAUSEN / Harz

Dora Kommando

SCHLIEBEN Krs. Schweinitz N 52/E 86

- 1) = S
- 2) = Hasag
- 3) = Hugo Schneider, Munitionsfabrik, Leipzig
- 4) = 1000 Frauen
- 5) = Juli 44 - April 45
- 6) = -

- 1a) = Sb, Schl.
- 3a) = Maennereinsatz Hasag-Herzberg/
Elster
- 4a) = 1700 Maenner
- 5a) = August 44 - April 45

SCHOENEBECK bei Magdeburg M 52/D 78

- 1) = J, Sch, Schb.
- 2) = Siegfried, Julius
- 3) = Junkerswerke
- 4) = 1560 Maenner
- 5) = Juni 44 - Maerz 45
- 6) = -

SCHWERTE / Westfalen K 52/A 81

- 1) = Sw, auch S im Blockbuch und Arbeitseinsatzbuch.
- 2) = Schwerte - Ruhr
- 3) = RAW, Reichsbahnausbesserungswerk
- 4) = 710 Maenner
- 5) = 24. April 44
- 6) = -

SENNELAGER bei Bielefeld L 52/B 65

- 1) = Sl.
- 2) = Sennelager
- 3) = Panzerausbildungs-Rg.
- 4) = 10 Maenner
- 5) = 26. November 44 - 10. April 45
- 6) = -

SALZUNGEN near Eisenach L 51/H 74

- 1) = Kh, KhR, Sa, Salz.
- 2) = Renntier, Kalb-Heinrich
- 3) = O.T. Bauleitung, Ludwig Renntier
- 4) = 460 men
- 5) = 10. January 45 - April 45
- 6) = evacuated to Buchenwald 6.4.45.

SANGERHAUSEN / Harz

Dora Kommando

SCHLIEBEN Krs. Schweinitz N 52/E 86

- 1) = S
- 2) = Hasag
- 3) = Hugo Schneider, ammunition factory, Leipzig
- 4) = 1000 women
- 5) = July 44 - April 45
- 6) = -

- 1a) = Sb, Schl.
- 3a) = Maennereinsatz Hasag/Herzberg/
Elster
- 4a) = 1700 men
- 5a) = August 44 - April 45

SCHOENEBECK near Magdeburg M 52/D 78

- 1) = J, Sch, Schb.
- 2) = Siegfried, Julius
- 3) = Junkerswerke
- 4) = 1560 men
- 5) = June 44 - March 45
- 6) = -

SCHWERTE / Westfalen K 52/A 81

- 1) = Sw, also S im Blockbuch and Arbeitseinsatzbuch.
- 2) = Schwerte - Ruhr
- 3) = RAW, Reichsbahnausbesserungswerk
- 4) = 710 men
- 5) = 24. April 44
- 6) = -

SENNELAGER near Bielefeld L 52/B 65

- 1) = Sl.
- 2) = Sennelager
- 3) = Panzerausbildungs-Rg.
- 4) = 10 men
- 5) = 26. November 44 - 10. April 45
- 6) = -

SOER

- 1.
- 2.
- 3.
- 4.
- 5.
- 6.

SOLI

- 1.
- 2.
- 3.
- 4.
- 5.
- 6.

SONI

- 1.
- 2.
- 3.
- 4.
- 5.
- 6.

SUHI

- 1.
- 2.
- 3.
- 4.
- 5.
- 6.

SANI

- 1.
- 2.
- 3.
- 4.
- 5.
- 6.

SUKI

- 1.
- 2.
- 3.
- 4.
- 5.
- 6.

SONI

- 1.
- 2.
- 3.
- 4.
- 5.
- 6.

SOEMMERDA / Thueringen M 52/J 39

- 1) = Sd
- 2) = -
- 3) = Rheinmetall - Borsig
- 4) = 1200 Frauen
- 5) = Kommando von Gelsenkirchen vom 20. September 44 bis April 45
- 6) = eingerichtet durch Ueberstellung von Gelsenkirchen nach Soemmerda am 20.9.44

SOEMMERDA / Thuringia M 52/J 39

- 1) = Sd
- 2) = -
- 3) = Rheinmetall - Borsig
- 4) = 1200 women
- 5) = Kommando of Gelsenkirchen from 20. September 44 until April 45
- 6) = established after transfer from Gelsenkirchen to Soemmerda on 20.9.44

SOLLSTEDT / Harz M 52/C 91

- 1) = -
- 2) = -
- 3) = Baubrigade 1
- 4) = 570 Maenner
- 5) = September 44 (Dora)
- 6) = -

SOLLSTEDT / Harz M 52/C 91

- 1) = -
- 2) = -
- 3) = Baubrigade 1
- 4) = 570 men
- 5) = September 44 (Dora)
- 6) = -

SONNEBERG / Thueringen M 51/J 40

- 1) = Sg, Son.
- 2) = Sonneberg
- 3) = Zahnrad-Werke, C 9 Rheinland
- 4) = 400 Maenner
- 5) = September 44 - April 45
- 6) = -

SONNEBERG / Thuringia M 51/J 40

- 1) = Sg, Son.
- 2) = Sonneberg
- 3) = Zahnrad-Werke, C 9 Rheinland
- 4) = 400 men
- 5) = September 44 - April 45
- 6) = -

SUHL / Thueringen (279) M 51/J 02

- 1) = K.S. (Blockbuch und Arbeits-einsatzbuch)
- 2) = -
- 3) = -
- 4) = 80 Maenner
- 5) = 1943
- 6) = -

SUHL / Thuringia (279) M 51/J 02

- 1) = K.S. (Blockbuch and Arbeits-einsatzbuch)
- 2) = -
- 3) = -
- 4) = 80 men
- 5) = 1943
- 6) = -

TANNENWALD

- 1) = Tw, Tanne
- 2) = Feldpost 84441
- 3) = -
- 4) = ca. 20 Maenner
- 5) = Dezember 44 - Maerz 45
- 6) = -

TANNENWALD

- 1) = Tw, Tanne
- 2) = Feldpost 84441
- 3) = -
- 4) = ca. 20 men
- 5) = December 44 - March 45
- 6) = -

TAUCHA bei Leipzig N 52/E 31

- 1) = T, Ta, Tau
- 2) = Hasag
- 3) = Hugo Schneider AG, Werk II Munitionsfabrik
- 4) = 1200 Frauen und 700 Maenner
- 5) = 19. September 44 - 11. Maerz 45
- 6) = Maennereinsatz begann 12.10.44

TAUCHA near Leipzig N 52/E 31

- 1) = T, Ta, Tau
- 2) = Hasag
- 3) = Hugo Schneider AG, Werk II, ammunition factory
- 4) = 1200 women and 700 men
- 5) = 19. September 44 - 11. March 45
- 6) = work of men began 12.10.44

TONNDORF bei Weimar M 51/J 46

- 1) = T, Ton
- 2) = Tonndorf
- 3) = SS-Bauleitung
- 4) = 120 Maenner
- 5) = Oktober 43 - Maerz 45
- 6) = -

TONNDORF near Weimar M 51/J 46

- 1) = T, Ton
- 2) = Tonndorf
- 3) = SS-Bauleitung
- 4) = 120 men
- 5) = October 43 - March 45
- 6) = -

Faint, mirrored text from the reverse side of the page, appearing as bleed-through. The text is largely illegible due to its low contrast and orientation.

TORC
1)
2)
3)
4)
5)
6)

PROF
S)

INN
1)
2)
3)
4)
5)
6)

ALF
1)
2)
3)
4)
5)
6)

ANS
1)
2)
3)
4)
5)
6)

RPH
1)
2)
3)
4)
5)
6)

RN
1)
2)
3)
3a)
4)
5)
6)

TORGAU / Sachsen

N 52/E 64

- 1) = Tg
- 2) = Muna
- 3) = Heeres-Munitionsanstalt
- 4) = 300 Frauen
- 5) = November 44 - Maerz 45
- 6) = Kommando war unterbrochen vom 26.11.44 - 10.12.44

TORGAU/ Sachsen

N 52/E 64

- 1) = Tg
- 2) = Muna
- 3) = Heeres-Munitionsanstalt
- 4) = 300 women
- 5) = November 44 - March 45
- 6) = Kommando was interrupted from 26.11.44 to 10.12.44

TROEGLITZ

Siehe Gleina.

TROEGLITZ

See Gleina.

UNNA / Westfalen

K 52/A 92

- 1) = KU, U
- 2) = -
- 3) = SS-Nachrichten-Abteilung
- 4) = 50 Maenner
- 5) = nur am 27.September 43 erwaeint
- 6) = -

UNNA / Westfalen

K 52/A 92

- 1) = KU, U
- 2) = -
- 3) = SS-Nachrichten-Abteilung
- 4) = 50 men
- 5) = mentioned only on 27.Sept.43
- 6) = -

WALKENRIED / Harz

M 52/C 93

- 1) = -
- 2) = -
- 3) = Baubrigade 3 (Dora)
- 4) = bis 1000 Maenner
- 5) = 1944
- 6) = -

WALKENRIED / Harz

M 52/C 93

- 1) = -
- 2) = -
- 3) = Baubrigade 3 (Dora)
- 4) = up to 1000 men
- 5) = 1944
- 6) = -

WANSLEBEN a.See / Halle M 52/D 72

- 1) = A.6, Wi, Bbr, Mf.
- 2) = Wilhelm, Biber II, Mansfeld
- 3) = Flugzeugmotoren-Werke, Einsatz Kaliwerk Georgi
- 4) = 1400 Maenner
- 5) = April 44 - April 45
- 6) = -

WANSLEBEN a.See / Halle

M 52/D 72

- 1) = A.6, Wi, Bbr, Mf.
- 2) = Wilhelm, Biber II, Mansfeld
- 3) = Flugzeugmotoren-Werke, Einsatz Kaliwerk Georgi
- 4) = 1400 men
- 5) = April 44 - April 45
- 6) = -

WEFERLINGEN / Magdeburg M 53/Y 21

- 1) = Gz
- 2) = Gazelle
- 3) = Bauleitung Gerhardt
- 4) = 500 Maenner
- 5) = 23.August 44 - 29.Maerz 45
- 6) = -

WEFERLINGEN / Magdeburg

M 53/Y 21

- 1) = Gz
- 2) = Gazelle
- 3) = Bauleitung Gerhardt
- 4) = 500 men
- 5) = 23.August 44 - 29.March45
- 6) = -

WERNIGERODE / Harz

M 52/D 16

- 1) = Wr, W, R, We, Ri
- 2) = Richard, Werner
- 3) = Rautal-Werke GmbH, Wernigerode
- 3a) = Wernig-Werke in Hasserode
- 4) = 650 Maenner
- 5) = Maerz 43 - April 45
- 6) = Fuer Rautalwerke vom Maerz 43 bis 20.Dezember 44 fuer Wernigwerke vom 10.Dezember 44 bis April 45

WERNIGERODE / Harz

M 52/D 16

- 1) = Wr, W, R, We, Ri
- 2) = Richard, Werner
- 3) = Rautal-Werke GmbH, Wernigerode
- 3a) = Wernig-Werke in Hasserode
- 4) = 650 men
- 5) = March 43 - April 45
- 6) = For Rautalwerke from March 43 until 20.December 44 For Wernigwerke from 10.December 44 until April 45.

1870
1871
1872
1873
1874
1875
1876
1877
1878
1879
1880

1881
1882
1883
1884
1885
1886
1887
1888
1889
1890

1891
1892
1893
1894
1895
1896
1897
1898
1899
1900

1901
1902
1903
1904
1905
1906
1907
1908
1909
1910

1911
1912
1913
1914
1915
1916
1917
1918
1919
1920

1921
1922
1923
1924
1925
1926
1927
1928
1929
1930

1
2
3
4
5
6
EST
1
2
3
4
5
6
EWD
1
2
3
4
5
6
LE
1
2
3
4
5
6
TY
S:
OL
1
2
3
4
5
6
OP

WEIMAR / Thueringen

M 51/J 57

- 1) = W, We, Wei
- 2) = -
- 3) = Gustloff-Werke, Fritz Sauckel-Werk und viele andere kleine Kommandos, auch bekannt unter Gustloffwerke I oder Gustloff I.
- 4) = 2300 Maenner
- 5) = September 43 - Februar 45
- 6) = -

WEIMAR / Thueringia

M 51/J 57

- 1) = W, We, Wei
- 2) = -
- 3) = Gustloff-Werke, Fritz Sauckel-Werk and many other small Kommandos also known under Gustloffwerke I or Gustloff I.
- 4) = 2300 men
- 5) = September 43 - February 45
- 6) = -

WESTEREGELN / Harz

M 52/D 58

- 1) = Mw, Maul,
- 2) = Maulwurf
- 3) = Junkerswerke / Zweigwerk Schoenebeck
- 4) = 600 Maenner
- 5) = November 44 - April 45
- 6) = -

WESTEREGELN / Harz

M 52/D 58

- 1) = Mw, Maul,
- 2) = Maulwurf
- 3) = Junkerswerke / Zweigwerk Schoenebeck
- 4) = 600 men
- 5) = November 44 - April 45
- 6) = -

WEWELSBURG / Paderborn

L 52/B 63

- 1) = Ww, Wg
- 2) = -
- 3) = Selbstaendiges KL Niederhagen und danach Aussenkommando Buchenwald, Bauleitung der SS-Schule, auch Amt fuer Sonderaufgaben.
- 4) = -
- 5) = -
- 6) = -

WEWELSBURG / Paderborn

L 52/B 63

- 1) = Ww, Wg
- 2) = -
- 3) = independent CC Niederhagen, after that Aussenkommando Buchenwald, Bauleitung of the SS-Schule, also Amt fuer Sonderaufgaben.
- 4) = -
- 5) = -
- 6) = -

WIEDA / Harz

M 52/C 94

- 1) = Wd
- 2) = -
- 3) = Baubrigade 3 (Dora)
- 4) = 250 Maenner
- 5) = 1944
- 6) = -

WIEDA / Harz

M 52/C 94

- 1) = Wd
- 2) = -
- 3) = Baubrigade 3 (Dora)
- 4) = 250 men
- 5) = 1944
- 6) = -

WITTEN / Westfalen

Siehe Annen

WITTEN / Westfalen

See Annen

WOLFEN bei Bitterfeld

M 52/E 15

- 1) = W
- 2) = -
- 3) = I.G. Farbenindustrie, Filmfabrik "Vistra"
- 4) = 420 Frauen
- 5) = Juli 44 - März 45
- 6) = -

WOLFEN near Bitterfeld

M 52/E 15

- 1) = W
- 2) = -
- 3) = I.G. Farbenindustrie, Filmfabrik "Vistra"
- 4) = 420 women
- 5) = July 44 - March 45
- 6) = -

WOPFLEBEN / Harz

M 52/D 03

- 1) = -
- 2) = -
- 3) = Baubrigade 3 (Dora)
- 4) = -
- 5) = 1944
- 6) = -

WOPFLEBEN / Harz

M 52/D 03

- 1) = -
- 2) = -
- 3) = Baubrigade 3 (Dora)
- 4) = -
- 5) = 1944
- 6) = -

WUE

1
2
3
4
5
6

2
3
5

ZET

S

ZII

1
2
3
4
5
6

WUPPERTAL / Nordrhein-Westfalen
K 52/F 69

- 1) = Wu, Wup.
- 2) = Bbr. IV
- 3) = Baubrigade IV
- 4) = 500 Maenner
- 5) = August 44
- 6) = Oktober 44 ueberstellt nach
K L Dora.

- 2a) = Bbr. 6, Bbr. VI
- 3a) = Baubrigade 6
als Eisenbahnbrigade 1
- 5a) = Sommer 44
Oktober ueberstellt nach
KL Dora.

ZEITZ

Siehe Gleina.

ZWIEBERGE / Harz M 52/D 27

- 1) = Z, Zwie, ("Juha"-Zwieberge,
"Z")
- 2) = -
- 3) = ~~Kommando Dora~~, Kommando
Zwieberge in Halberstadt
- 4) = 800 - 900
- 5) = August 44 - 28. Februar 45
- 6) = -

WUPPERTAL / Nordrhein-Westfalen
K 52/F 69

- 1) = Wu, Wup.
- 2) = Bbr. IV
- 3) = Baubrigade IV
- 4) = 500 men
- 5) = August 44
- 6) = October 44 transferred
to CC Dora.

- 2a) = Bbr. 6, Bbr. VI
- 3a) = Baubrigade 6
as Eisenbahnbrigade 1
- 5a) = Summer 44
October transferred to
CC Dora.

ZEITZ

See Gleina.

ZWIEBERGE / Harz M 52/D 27

- 1) = Z, Zwie, ("Juha"-Zwieberge,
"Z")
- 2) = -
- 3) = ~~Kommando Dora~~, Kommando
Zwieberge in Halberstadt
- 4) = 800 - 900
- 5) = August 44 - 28. February 45
- 6) = -

ABTERODA bei Eisenach L 51/H 65

Abkuerzung: An, Ar, Ant.
Deckname : Anton
Arbeit : B.M.W. Bayer. Motoren Werke
Staerke : 230 Frauen
Zeitdauer : 30. Juli 44 - 27. Maerz 45.
Bemerkungen: -

ABTERODA near Eisenach L 51/H 65

Abbreviation: An, Ar, Ant.
Code name : Anton
Kind of work: B.M.W. Bayer. Motoren Werk
Strength : 230 women
Existence : 30. July 44 - 27. March 45
Remarks : -

ALLENDORF bei Marburg L 51/G 94

- 1) = Ad.
- 2) = Nobel
- 3) = Verwertung chemischer Erzeugnisse
- 4) = 1000 Frauen
- 5) = 17. August 44 - 27. Maerz 45
- 6) = evakuiert nach Bergen-Belsen.

ALLENDORF near Marburg L 51/G 94

- 1) = Ad.
- 2) = Nobel
- 3) = Verwertung chemischer Erzeugnisse
- 4) = 1000 women
- 5) = 17. August 44 - 27 March 45
- 6) = evacuated to Bergen-Belsen.

ALTENBURG in Thueringen N 51/K 37

- 1) = Ab, Has A.
- 2) = Hasag
- 3) = Hugo Schneider A.G. Munitions-
werke
- 4) = 2500 Frauen und 200 Maenner
- 5) = 2. August 44 - April 45
- 6) = -

ALTENBURG in Thuringia N 51/K 37

- 1) = Has A, Ab.
- 2) = Hasag
- 3) = Hugo Schneider A.G., ammunition
Factory
- 4) = 2500 women and 200 men
- 5) = 2. August 44 - April 45
- 6) = -

ANNABURG bei Torgau N 52/E 66

- 1) = Ag
- 2) = -
- 3) = Annaburger Geraetebau (Siebel
Flugzeugwerke)
- 4) = 90 Maenner
- 5) = 13. Januar 45
- 6) = -

ANNABURG near Torgau N 52/E 66

- 1) = Ag
- 2) = -
- 3) = Annaburger Geraetebau (Siebel
Flugzeugwerke)
- 4) = 90 men
- 5) = 13. January 45
- 6) = -

ANNEN bei Witten K 52/A 71

- 1) = AGW, AG
- 2) = -
- 3) = Annener Gusstahlwerke
- 4) = 700 Maenner
- 5) = 27. September 44 - April 45
- 6) = -

ANNEN near Witten K 52/A 71

- 1) = AGW, AG
- 2) = -
- 3) = Annener Gusstahlwerke
- 4) = 700 men
- 5) = 27. September 44 - April 45
- 6) = -

AROLSEN bei Kassel L 52/B 80

- 1) = A, Arol.
- 2) = Artur
- 3) = SS-Fuehrerschule
- 4) = 100 Maenner
- 5) = 25. Juni 44 - 29 Maerz 45

AROLSEN near Kassel L 52/B 80

- 1) = A, Arol.
- 2) = Artur
- 3) = SS-Fuehrerschule
- 4) = 100 men
- 5) = 25. June 44 - 29. March 45

ASCHERSLEBEN bei Magdeburg M 52/D 55

- 1) = A1, A 2, Asch.
- 2) = -
- 3) = Junkers-Werke (unter SS Fuehrungs-
stab A 2)
- 4) = 600 Maenner
- 5) = 15. August 44 - 10. April 45
- 6) = -

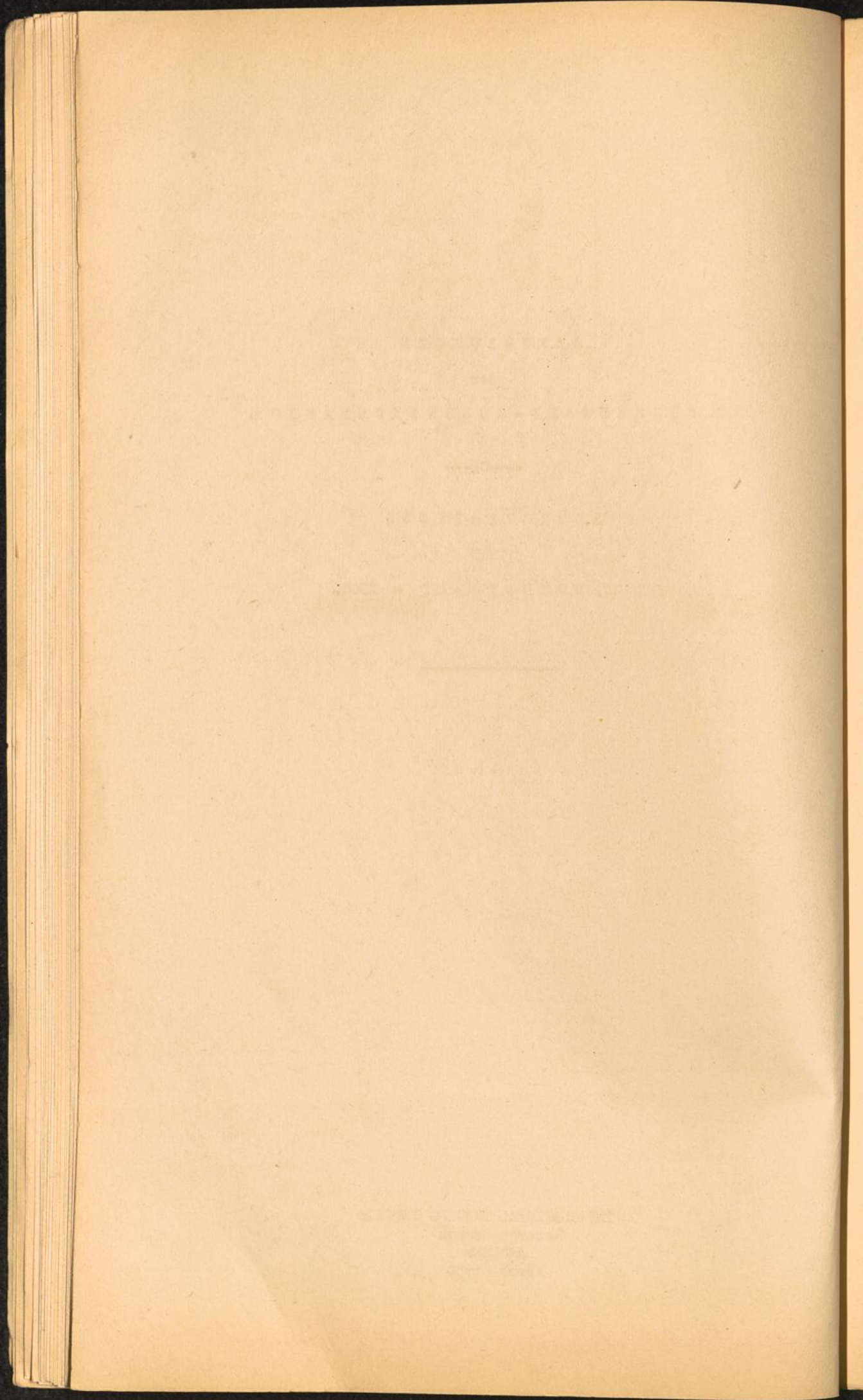
ASCHERSLEBEN near Magdeburg M 52/D 55

- 1) = A1, A 2, Asch.
- 2) = -
- 3) = Junkers-Werke (under the Fuehrungs-
stab A 2)
- 4) = 600 men
- 5) = 15. August 44 - 10. April 45
- 6) = -

ABKÜRZUNGEN
der
K.Z. BUCHENWALD - AUSSENKOMMANDOS.

---oOo---

ABBREVIATIONS
USED
FOR C.C. BUCHENWALD - KDOs.

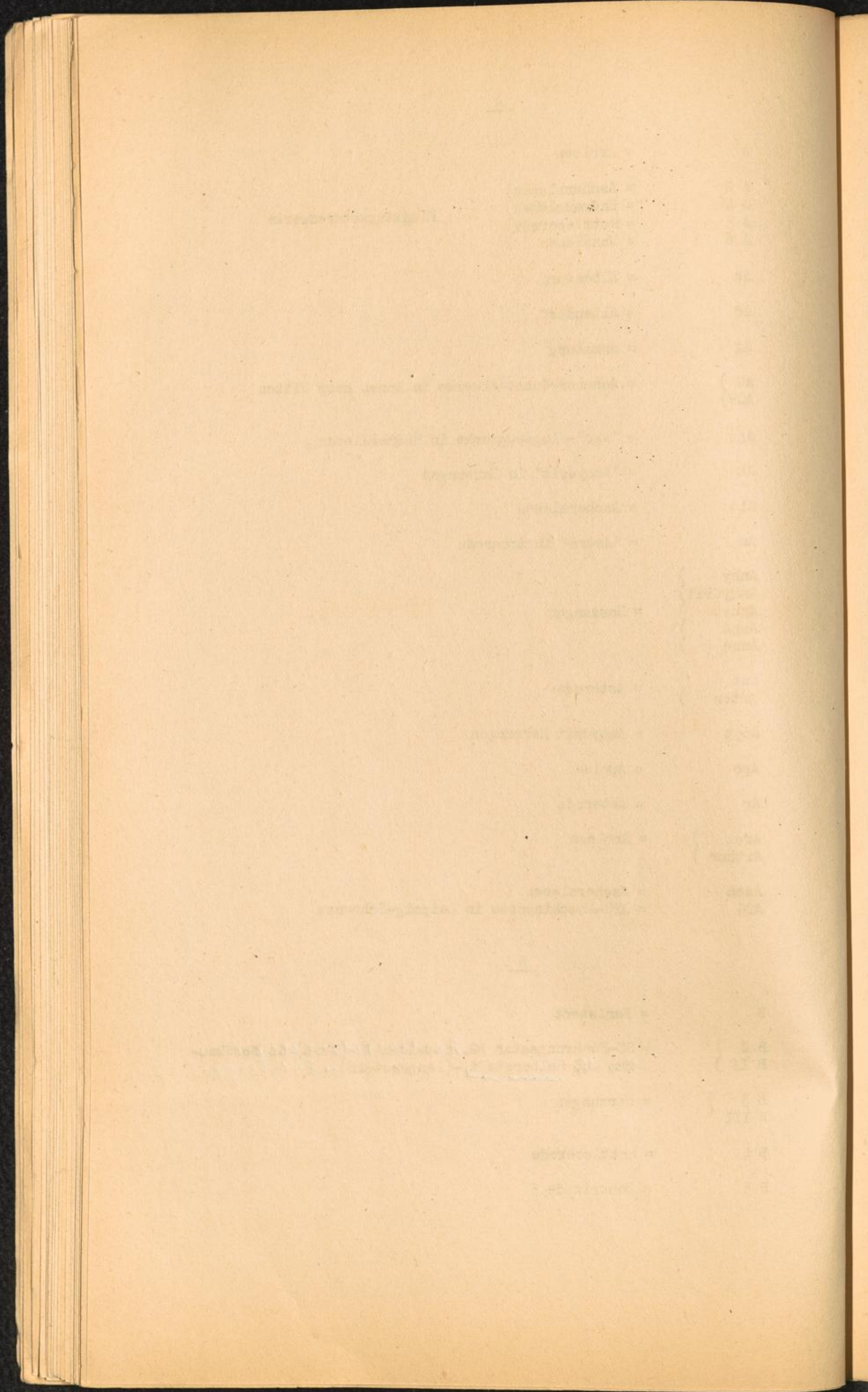


A

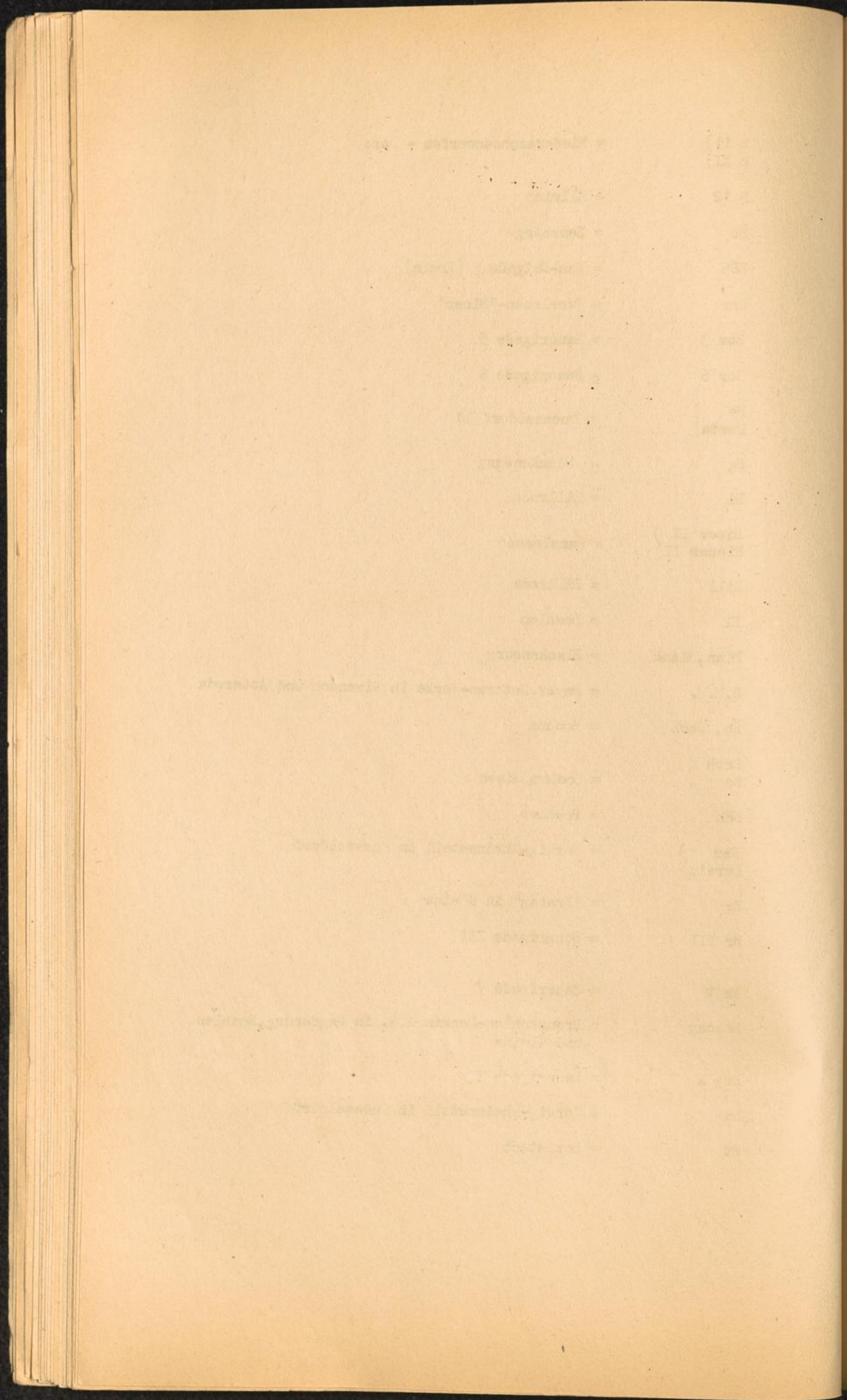
- A = Arolsen
 - A 2 = Aschersleben
 - A 4 = Hämmerleben
 - A 5 = Rottleberode
 - A 6 = Wansleben
- } Flugzeugmotorenwerke
- Ab = Altenourg
 - Ad = Allendorf
 - Ag = Annaburg
 - AG } = Annener-Gusstahlwerke in Annen near Witten
 - AGW }
 - Ago = "Ago"-Flugzeugwerke in Hämmerleben
 - Ah = "Anhydrit" in Harzungen
 - Al = Aschersleben
 - An = "Anten" in Aoteroda
 - Anhy } = Harzungen
 - Anhydrit }
 - Anhyt }
 - Anna }
 - Anne }
 - Ant } = Aoteroda
 - Anten }
 - Anyt = Anhydrit Harzungen
 - Apo = Apolda
 - Ar = Aoteroda
 - Arol } = Arolsen
 - Arthur }
 - Asch = Aschersleben
 - ATG = ATG-Maschinenbau in Leipzig-Schoenau

B

- B = Berlstedt
- B 2 } = SS-Fuehrungsstab B2. ~~Mittelbau~~ *Mittelbau* ~~in Schoenau~~
- B II } ~~in der~~ Halberstadt - (Langenstein) - *Zriberge*
- B 3 } = Harzungen
- B III }
- B 4 = Rottleberode
- B 5 = Bauorigade 5



B 11) B XI)	= Niedersachsenwerfen - Dora
B 12	= Ellrich
Bo	= Bensberg
BB5	= Bau-Brigade 5 (Koeln)
Bor	= Wansleben-"Biber"
Bor 3	= Bauorigade 3
Bor 6	= Bauorigade 6
Be) Berta)	= Duesseldorf Dd
Bg	= Blankenbourg
Bi	= Billroda
Biber II) Bieber II)	= Wansleben
Bill	= Billroda
Bl	= Boehlen
Blan,Blank	= Blankenourg
B.M.W.	= Bayer.Motoren-Werke in Eisenach und Apteroda
Bo, Boch	= Bochum
Boch B Bo B	= Bochum Eisen
Böh	= Boehlen
Ber) Borsig)	= Borsig-Rheinmetall in Duesseldorf
Br	= "Brabag" in Gleina
Br III	= Bauorigade III
Br V	= Bauorigade V
Brabag	= Braunkohlen-Benzin A.G. in Magdeburg, Boehlen und Gleina
Brg X	= Bauorigade X
Bs	= Borsig-Rheinmetall in Duesseldorf
Bt	= Berlstedt



C

C = Colditz

D

D = Dessau - for men
= Dortmund - for women

Da = Former abbreviation for Dora in Blockbook and
Arbeitseinsatzbook

Dd } = Duesseldorf
D'dorf }
Des = Dessau

Dest = Deutsche Erd und Steinwerke in Berlstedt, Essen
und Duesseldorf

Deutz = Koeln-Deutz

Dg = Duisburg

Do } = Dora
Dora }

Ds = Duesseldorf

Du = Duisburg

E

E = Elsnig = for women
= "Emil" in Leipzig, for men

Ebr I = Eisenbahnbaubrigade I

Eb 11 }
Ei VI } = Eisenbahnbaubrigade 11, VI, XII
Ei XII }

EI = Ellrich

Em } = "Emma" in Eisenach
Emma }

Emil = Leipzig

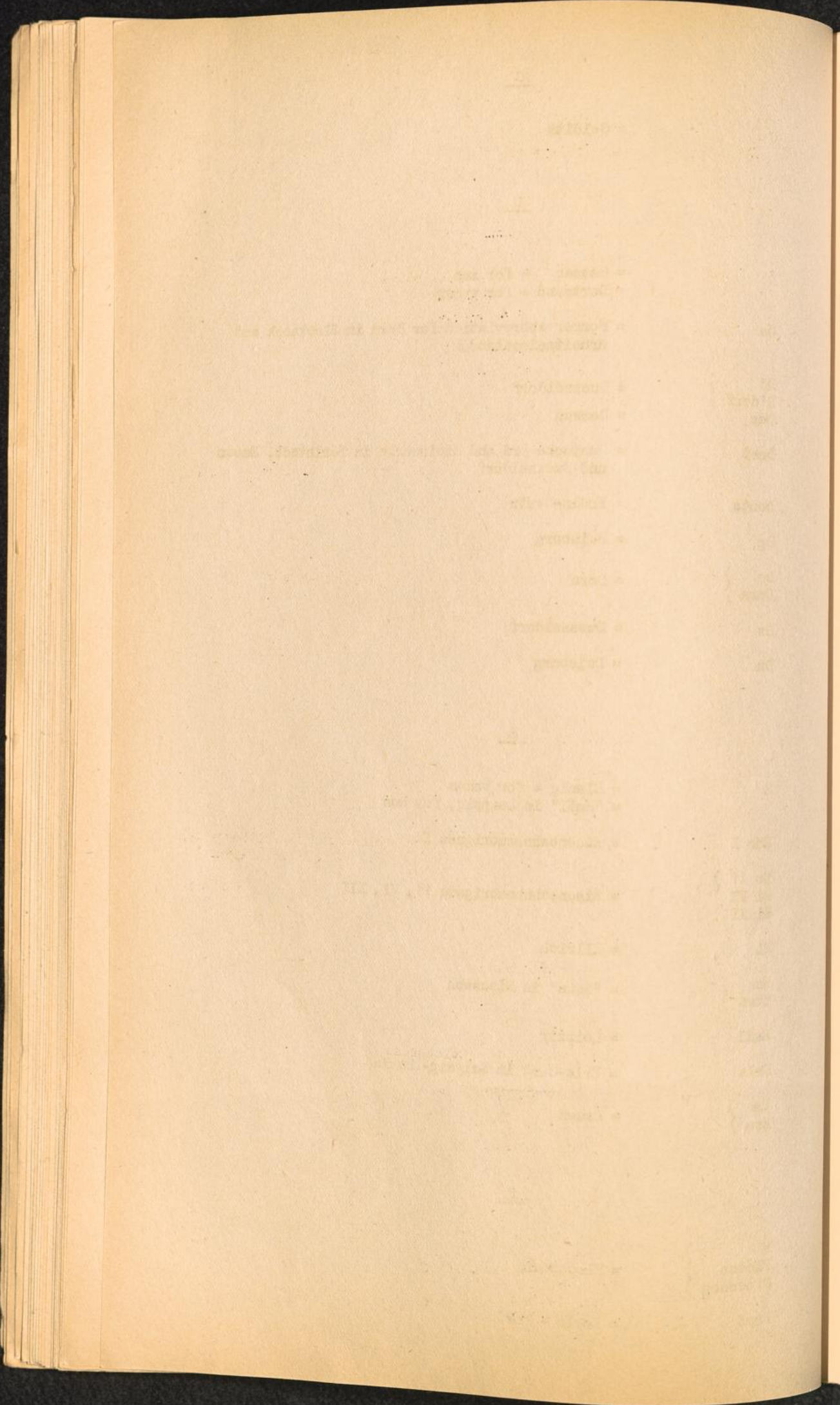
Erla = Erla-Werk in Leipzig-Thokla

Es } = Essen
Ess }

F

F }
Floess } = Floessberg
Floessbg }

Ford = Koeln - Ford



G

G	= Giessen
Gand	= Gandersheim
Gaz Gazelle }	= Weferlingen
Gd	= Godesberg
Gelsenberg	= Benzin AG in Gelsenkirchen
Gerta	= Giessen
Gg	= Goettingen
Gh	= Gandersheim
Gk	= Gelsenkirchen - for women
Gbt	= Goettingen
Golditz	= Colditz
Gosl) Gsl)	= Goslar
Gustloff	= Gustloff-Werke, in Weimar und Buchenwald
Gz	= "Gazelle" in Weferlingen

H

Ha	= Halle a.d.Saale
Halb	= Halberstadt
Hans	= Hadmersleben
Has) Hasag)	= Hugo Schneider AG ammunition-factory in Altenburg, Colditz, Leipzig, Meuselwitz, Schlieben and Taucha
Has A	= "Hasag" Altenburg
Has C	= "Hasag" Colditz
Has L) Has Lei)	= "Hasag" Leipzig
Hb	= Halberstadt
Hch	= "Heinrich" - Rottleberode
Hecht	= Eschershausen
Hei) Heinrich) Heinrich T)	= Rottleberode
Hh	= Bensberg
Hl	= Hessisch Lichtenau - for women
Hs	= "Hans" - Hadmersleben
Ht	= "Hecht" Eschershausen

Faint, illegible text, possibly bleed-through from the reverse side of the page.

Faint, illegible text, possibly bleed-through from the reverse side of the page.

J

J	= "Julius" in Schoenebeck
Je	= Jena
Jh	= Junkerswerke-Halberstadt
Ju	= General abbreviation for Junkerswerke (Aschersleben, Halberstadt, Langensalza, Leopoldshall, Schoenebeck)
Juha	= Junkerswerke-Halberstadt
Julius	= Schoenebeck
Julius M	= Muehlhausen (for men)

K

K	= Kassel
K 5	= Baubrigade 5 (Koeln)
Ka	= Kassel in Blockbook and Arbeitseinsatzbook
Kalb	= Salzungen
Kaliwerk	= Wansleben
Kalk } Kalkum }	= Duesseldorf
Kas } Kass }	= Kassel
Kh, KH	= Kalb-Heinrich
Khr, KHR	= Kalb-Heinrich-"Renntier" } in Salzungen
Kk	= Kalkum - Duesseldorf
Kl	= Former abbreviation for Leipzig in Blockbook and Arbeitseinsatzbook
KB	= Koeln in Blockbook and Arbeitseinsatzbook
KB - F	= Koeln - Ford
Kr } Krf }	= Kranichfeld
KS	= Suhl in Blockbook and Arbeitseinsatzbook
KU	= Former abbreviation for Unna in Blockbook and Arbeitseinsatzbook
KW	= Former abbreviation for Koeln-West in Blockbook and Arbeitseinsatzbook
KW 5	= Baubrigade 5 (Koeln) former abbreviation in Blockbook and Arbeitseinsatzbook

1. ...
2. ...
3. ...
4. ...
5. ...
6. ...
7. ...
8. ...
9. ...
10. ...

11. ...
12. ...
13. ...
14. ...
15. ...
16. ...
17. ...
18. ...
19. ...
20. ...

21. ...
22. ...
23. ...
24. ...
25. ...
26. ...
27. ...
28. ...
29. ...
30. ...

L

L	= Leipzig
L II	= No Aussenkommando, but Lager II in Buchenwald (Kleines Lager)
La	= "Laura" - Saalfeld a.d.Saale
Lango	= Langensalza
Langenwerke	= Niederorschel
Laura	= Saalfeld
Lbg	= Laueburg-Kommando CC Stutthof
Ld	= Luetzkendorf
Leau	= Floemnitz
Lchesten	= "Laura", Saalfeld
Lei	= Leipzig
Leop	= Leopoldshall
Leopard	= Floemnitz
Lg II	= Lager II in Buchenwald (Kleines Lager)
Lh	= Leopoldshall
Lr	= "Laura"
Ls	= Lippstadt - for women Langensalza - for men
Ltitz	= Luetzkendorf

M

M	= Muehlhausen
Ma	= "Martha" in Muehlhausen
Magda } Magde }	= Magdeburg
Mai } Maif } Maifisch }	= Halberstadt-Langenstein
Mal } Malachyt } Mal AG }	= Halberstadt - Langenstein Magdeburg
Mansfeld	= Flugzeugmotorenwerke: Leipzig, Rottleberode, Rothenburg, Wansleben
Marta	= Muehlhausen
Maul } Maulwu } Maulwurf }	= Westeregeln

1 - 1000
2 - 1000
3 - 1000
4 - 1000
5 - 1000
6 - 1000
7 - 1000
8 - 1000
9 - 1000
10 - 1000
11 - 1000
12 - 1000
13 - 1000
14 - 1000
15 - 1000
16 - 1000
17 - 1000
18 - 1000
19 - 1000
20 - 1000
21 - 1000
22 - 1000
23 - 1000
24 - 1000
25 - 1000
26 - 1000
27 - 1000
28 - 1000
29 - 1000
30 - 1000
31 - 1000
32 - 1000
33 - 1000
34 - 1000
35 - 1000
36 - 1000
37 - 1000
38 - 1000
39 - 1000
40 - 1000
41 - 1000
42 - 1000
43 - 1000
44 - 1000
45 - 1000
46 - 1000
47 - 1000
48 - 1000
49 - 1000
50 - 1000
51 - 1000
52 - 1000
53 - 1000
54 - 1000
55 - 1000
56 - 1000
57 - 1000
58 - 1000
59 - 1000
60 - 1000
61 - 1000
62 - 1000
63 - 1000
64 - 1000
65 - 1000
66 - 1000
67 - 1000
68 - 1000
69 - 1000
70 - 1000
71 - 1000
72 - 1000
73 - 1000
74 - 1000
75 - 1000
76 - 1000
77 - 1000
78 - 1000
79 - 1000
80 - 1000
81 - 1000
82 - 1000
83 - 1000
84 - 1000
85 - 1000
86 - 1000
87 - 1000
88 - 1000
89 - 1000
90 - 1000
91 - 1000
92 - 1000
93 - 1000
94 - 1000
95 - 1000
96 - 1000
97 - 1000
98 - 1000
99 - 1000
100 - 1000

Mb = Markkleeberg - for women
 Mb = Magdeburg - for men
 Mb.Pol = Magdeburg - for women
 Meu = Meuselwitz
 Mf = Mansfeld (See Mansfeld)
 Mfs = "Maifisch" (See Maifisch)
 Mg = Magdeburg - for women
 Mi-Bau }
 Mibau } = Dora
 Mittelbau }
 Ms = Meuselwitz (for men)
 Mu }
 Muna } = Munitionsanstalt (Oberndorf) (ammunition factory)
 Mw = Meuselwitz (for women)
 = Maulwurf (for men)

N

N = Neustadt (for women)
 Na Ben }
 N Ben } = "Napola" Bensberg
 Napola = Nationalpolitische Erziehungsanstalt (Bensberg)
 Nied }
 No } = Niederorschel
 Nobel = Allendorf

O

O }
 Od } = Ohrdruf, S 3
 Or }
 Ost } = Osterode

10. 10. 1910

11. 11. 1910

12. 12. 1910

13. 13. 1910

14. 14. 1910

15. 15. 1910

16. 16. 1910

17. 17. 1910

18. 18. 1910

19. 19. 1910

20. 20. 1910

21. 21. 1910

22. 22. 1910

23. 23. 1910

24. 24. 1910

25. 25. 1910

26. 26. 1910

27. 27. 1910

28. 28. 1910

29. 29. 1910

30. 30. 1910

P

P	}	= Floemnitz
Flömm		
Flömm		
Pol	}	= Poltewerke in Duderstadt and Magdeburg
Polte		
Q	}	= Quedlinburg
Qu		

R

R	= "Richard" in Wernigerode	
Rautal	= Rautalwerke in Wernigerode	
RAW	= Reichsbahnausbesserungswerk	
Rb	= Rothenburg	
Reb	}	= Dernau
Rebstock		
Reh	= Neustassfurt	
Renntier	= Salzungen	
Ri	}	= Wernigerode
Richard		
Rot	= Rothenburg	
Rs	= "Rebstock" - Dernau	
Rupo	= Ohrdruf , S 3	

S

S	= Schlieben (for women)	
S	= Schwalbe V, Berga - Elster (for men)	
S	= former abbreviation for Schwerte in Blockbook and Arbeitseinsatzbook (for men)	
S III	}	= Ohrdruf
S 3		
Sa	}	= Salzungen
Salz		
Sb	= Schlieben (for men)	
Sch	= Schoenebeck	

Schl	= Schlieben (for men)
Schö	= Schoenebeck
Schw	} = SS-Fuehrungsstab in Berga-Elster
Schwal 5	
Schwalbe	
Schwalbe 5	
Sd	= Soemmerda (for women)
Sg	= Sonneberg
Siebel	= Flugzeugwerke Halle/saale
Sl	= Sennelager
Son	= Sonneberg
Sü)	= Sued=Dora (former term)
Süd)	
Sw	= Schwerte

T

T	= Taucha (for women) Tonndorf (for men)
Ta	= Taucha (for men)
Tanne	= Tannenwald
Tau	= Taucha (for men)
Tg	= Torgau (for women)
Th	= "Thyra" - Rottleberode
Thekla	= Leipzig - Thekla
Thyra	= Rottleberode
Ton	= Tonndorf
Tr	= "Thyra" - Rottleberode
Trbg	= Troeglitz (see Gleina "Wille")
Tw	= Tannenwald
V	= (Roman 5) = Baubrigade V
U	= Unna

W

W = Wolfen (for women)
Wernigerode (for men)

WAl }
WAlz } = Neustassfurt
WAlzer }

Wasag = Westfaelisch-Anhaltische Sprengstoff-AG Elsnig

Wd = Wieda

We = mostly Weimar, sometimes Wernigerode

Wei = Weimar

Wg = Wewelsburg

Wi }
Wilh } = "Wilhelm", Wansleben
Wilhelm }

Wille }
Wl } = Gleina

Wl = Also Wuppertal in Blockbook and Arbeitseinsatzbook

Wr = Wernigerode

Wu = Wuppertal

Wüste = Aussenkommando of CC Natzweiler

Wup = Wuppertal

Ww = Wewelsburg

Wz = Waelzer - Neustassfurt

X = Baubrigade 10

Z

Z = No Aussenkommando but Zeltlager in CC Buchenwald Blockbook

Z = Aussenkommando Zwieberge in CC Buchenwald Entry-Register

Zwie = Zwieberge

1860

Item	Quantity	Price	Total
Wheat	100 bushels	1.00	100.00
Barley	50 bushels	0.80	40.00
Oats	200 bushels	0.50	100.00
Rye	100 bushels	0.70	70.00
Hay	1000 lbs	0.10	100.00
Grain	500 bushels	0.20	100.00
Flour	100 barrels	1.00	100.00
Wheat	100 bushels	1.00	100.00
Barley	50 bushels	0.80	40.00
Oats	200 bushels	0.50	100.00
Rye	100 bushels	0.70	70.00
Hay	1000 lbs	0.10	100.00
Grain	500 bushels	0.20	100.00
Flour	100 barrels	1.00	100.00